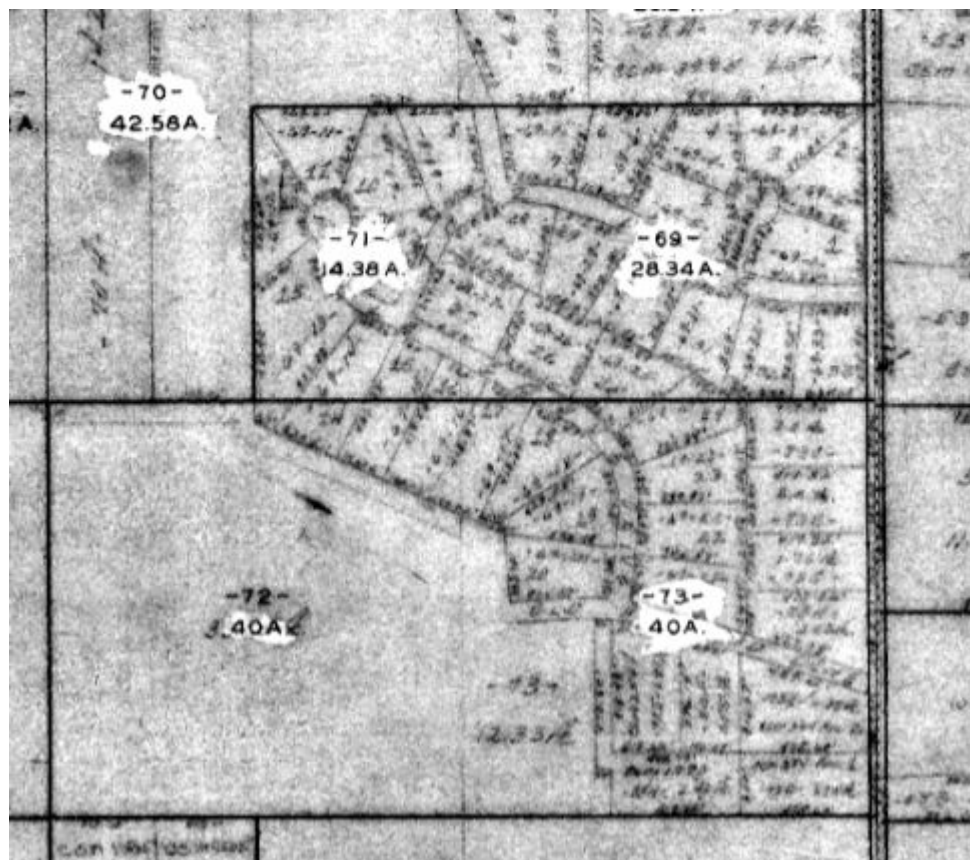


The 1930's Historic Tax Map were actively maintained from the day they were created to about the year 2000 when the Geographic Information Systems Department took over as digital mapping. The changes made over the years in pencil are still visible on the map. The darker, heavier lines and text represent the original 1930's map.



In this example, tax key numbers 69, 71 and 73 were developed into a subdivision as you can see by the faint lines and text.

Using the acreages (often under white correction fluid), we can determine where the original tax parcels existed.



The red boxes highlight the original configuration. Parcel 69 containing 28.34 acres, Parcel 71 containing 14.38 acres and Parcel 73 at 40 acres.