



TRENTON BENCHMARKS

This is a PDF of **all mapped Benchmarks 1997 forward** in T11E R20W ordered by section number.

For pre-1997 benchmarks, click to view [index map and scanned images of benchmark sheets.](#)

Please scroll to your desired benchmark.



For more information or to report problems, contact:
Scott M. Schmidt, PE, RLS
Washington County Engineer/Surveyor
Washington County Public Agency Center (PAC)
333 East Washington St, Suite 2300
P.O. Box 2003
West Bend, WI 53095-2003
Phone: 262-335-6881
Fax: 262-335-4171
Email: scott.schmidt@co.washington.wi.us

RECORD OF VERTICAL CONTROL STATION

SECTION 6 T 11 N, R 20 E, WASHINGTON COUNTY, WISCONSIN

BENCH MARK NO.: 6-1

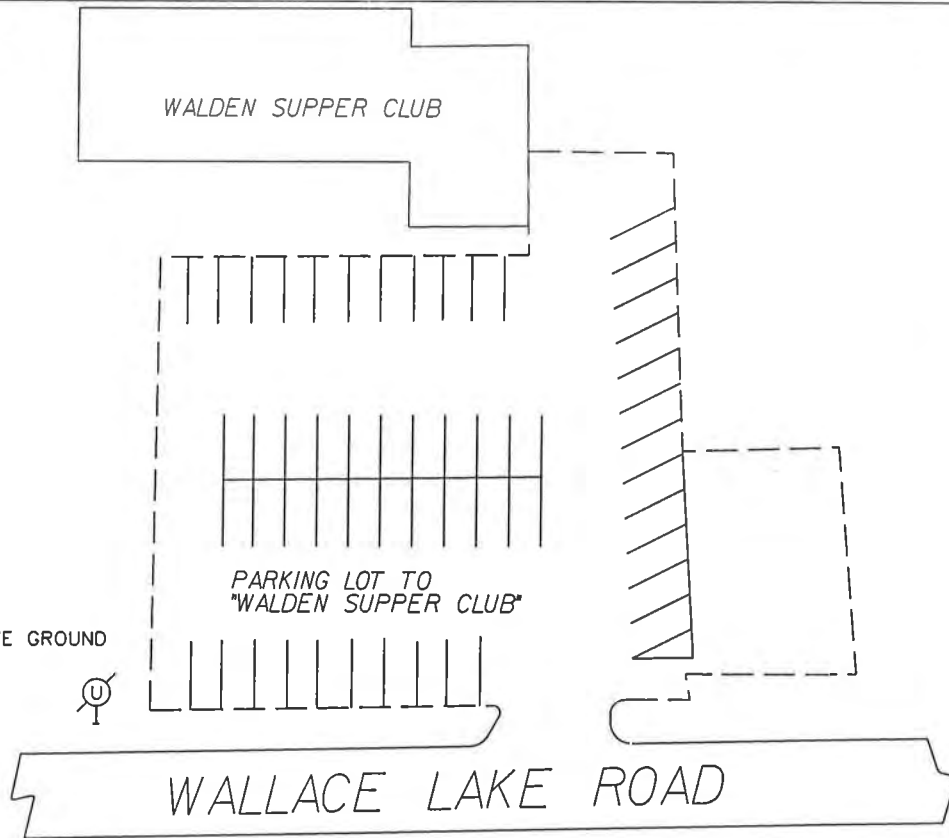
BM SET BY: WASHINGTON COUNTY

BM CONTROL SURVEY BY: WASHINGTON COUNTY

DATUM: NATIONAL GEODETIC VERTICAL DATUM OF 1929

CONTROL ACCURACY: SECOND ORDER, CLASS II

LOCATION SKETCH:



BENCHMARK 6-1
RR SPIKE
S FACE, 0.1' ABOVE GROUND
P.P. NO. 00-19972
ELEV.: 905.619



DETAILED DESCRIPTION:

Benchmark 6-1 is a railroad spike set in the south face of power pole number 00-19972.

RECOVERED BY: WASHINGTON COUNTY DATE: November 6, 2009

FORM PREPARED BY SOUTHEASTERN WISCONSIN REGIONAL PLANNING COMMISSION

RECORD OF VERTICAL CONTROL STATION

SECTION 6 T 11 N, R 20 E, WASHINGTON COUNTY, WISCONSIN

BENCH MARK NO.: 6-2 & 6-3

BM SET BY: WASHINGTON COUNTY

BM CONTROL SURVEY BY: WASHINGTON COUNTY

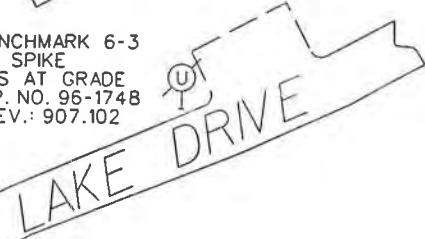
DATUM: NATIONAL GEODETIC VERTICAL DATUM OF 1929

CONTROL ACCURACY: SECOND ORDER, CLASS II

LOCATION SKETCH:



SOUTH WALLACE



WALLACE LAKE ROAD



BENCHMARK 6-3
RR SPIKE
S/S AT GRADE
P.P. NO. 96-1748
ELEV.: 907.102

BENCHMARK 6-2
RR SPIKE
W FACE, 0.1' ABOVE GROUND
P.P. NO. 96-14476
ELEV.: 907.802

DETAILED DESCRIPTION:

Benchmark 6-2 is a railroad spike set in the west face of power pole number 96-14476.

Benchmark 6-3 is a railroad spike set in the south face of power pole number 96-14748.

RECOVERED BY: WASHINGTON COUNTY DATE: November 6, 2009

RECORD OF VERTICAL CONTROL STATION

SECTION 6 T 11 N. R 20 E. WASHINGTON COUNTY, WISCONSIN

BENCH MARK NO.: 6-4

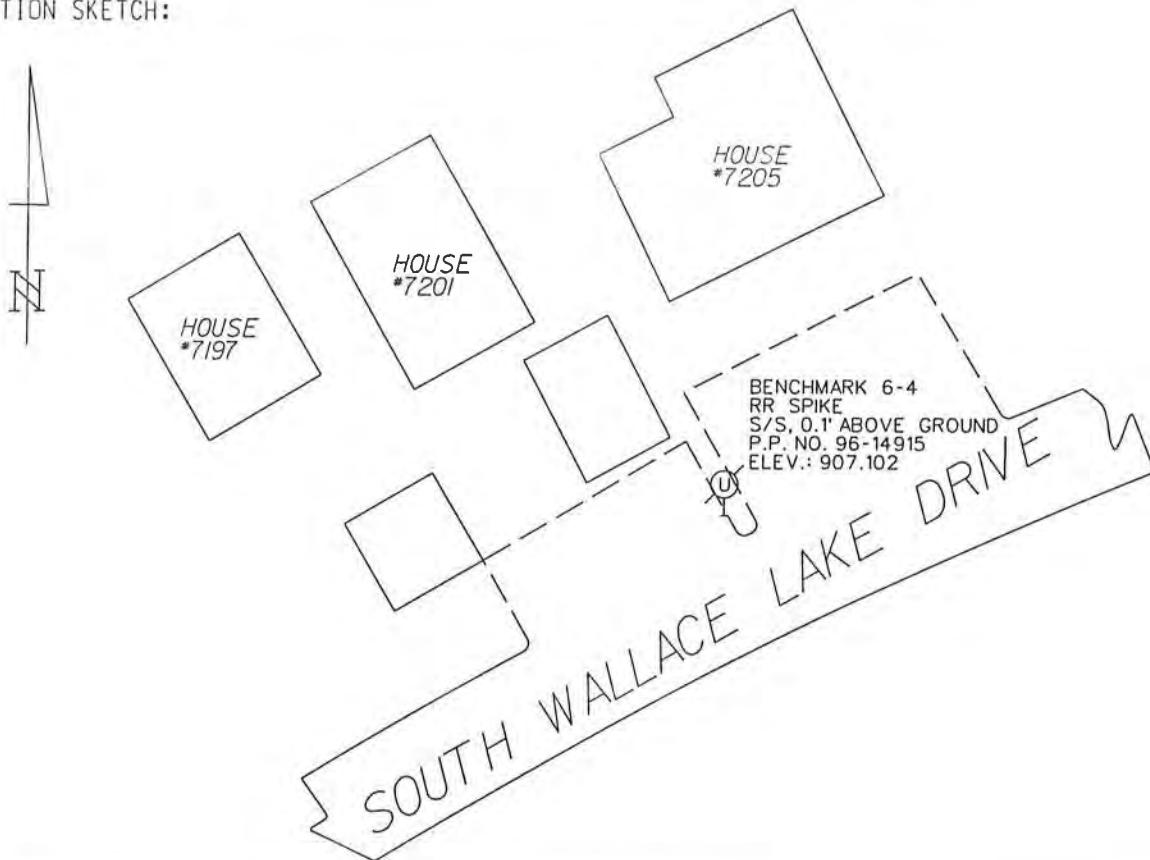
BM SET BY: WASHINGTON COUNTY

BM CONTROL SURVEY BY: WASHINGTON COUNTY

DATUM: NATIONAL GEODETIC VERTICAL DATUM OF 1929

CONTROL ACCURACY: SECOND ORDER, CLASS II

LOCATION SKETCH:



DETAILED DESCRIPTION:

Benchmark 6-4 is a railroad spike set in the south face of power pole number 96-14519.

RECOVERED BY: WASHINGTON COUNTY DATE: November 6, 2009

RECORD OF VERTICAL CONTROL STATION

SECTION 6 T 11 N. R 20 E. WASHINGTON COUNTY, WISCONSIN

BENCH MARK NO.: 6-5

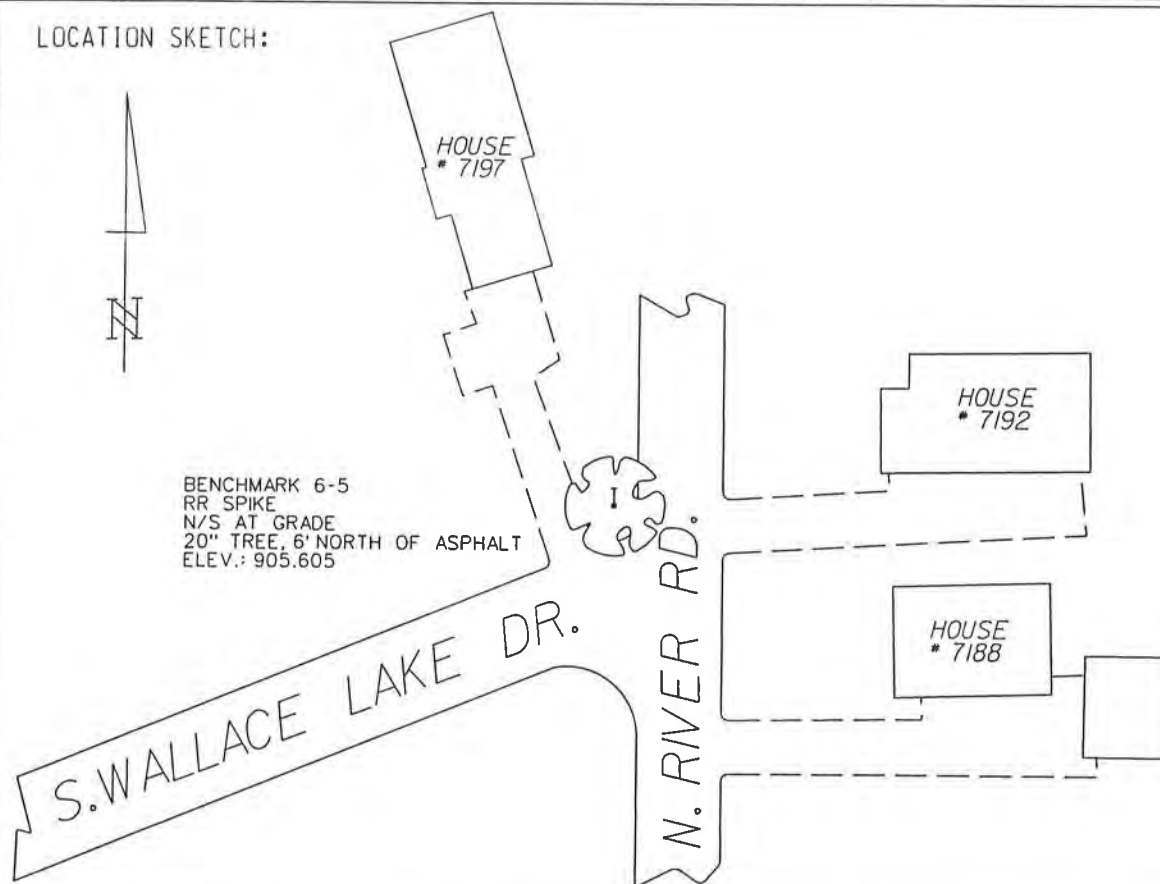
BM SET BY: WASHINGTON COUNTY

BM CONTROL SURVEY BY: WASHINGTON COUNTY

DATUM: NATIONAL GEODETIC VERTICAL DATUM OF 1929

CONTROL ACCURACY: SECOND ORDER, CLASS II

LOCATION SKETCH:



DETAILED DESCRIPTION:

Benchmark 6-5 is a railroad spike set in the north face of a 20" tree.

RECOVERED BY: WASHINGTON COUNTY DATE: November 6, 2009

FORM PREPARED BY SOUTHEASTERN WISCONSIN REGIONAL PLANNING COMMISSION

RECORD OF VERTICAL CONTROL STATION

SECTION 6 T 11 N, R 20 E, WASHINGTON COUNTY, WISCONSIN

BENCH MARK NO.: 6-7 & 6-8

BM SET BY: WASHINGTON COUNTY

BM CONTROL SURVEY BY: WASHINGTON COUNTY

DATUM: NATIONAL GEODETIC VERTICAL DATUM OF 1929

CONTROL ACCURACY: SECOND ORDER, CLASS II

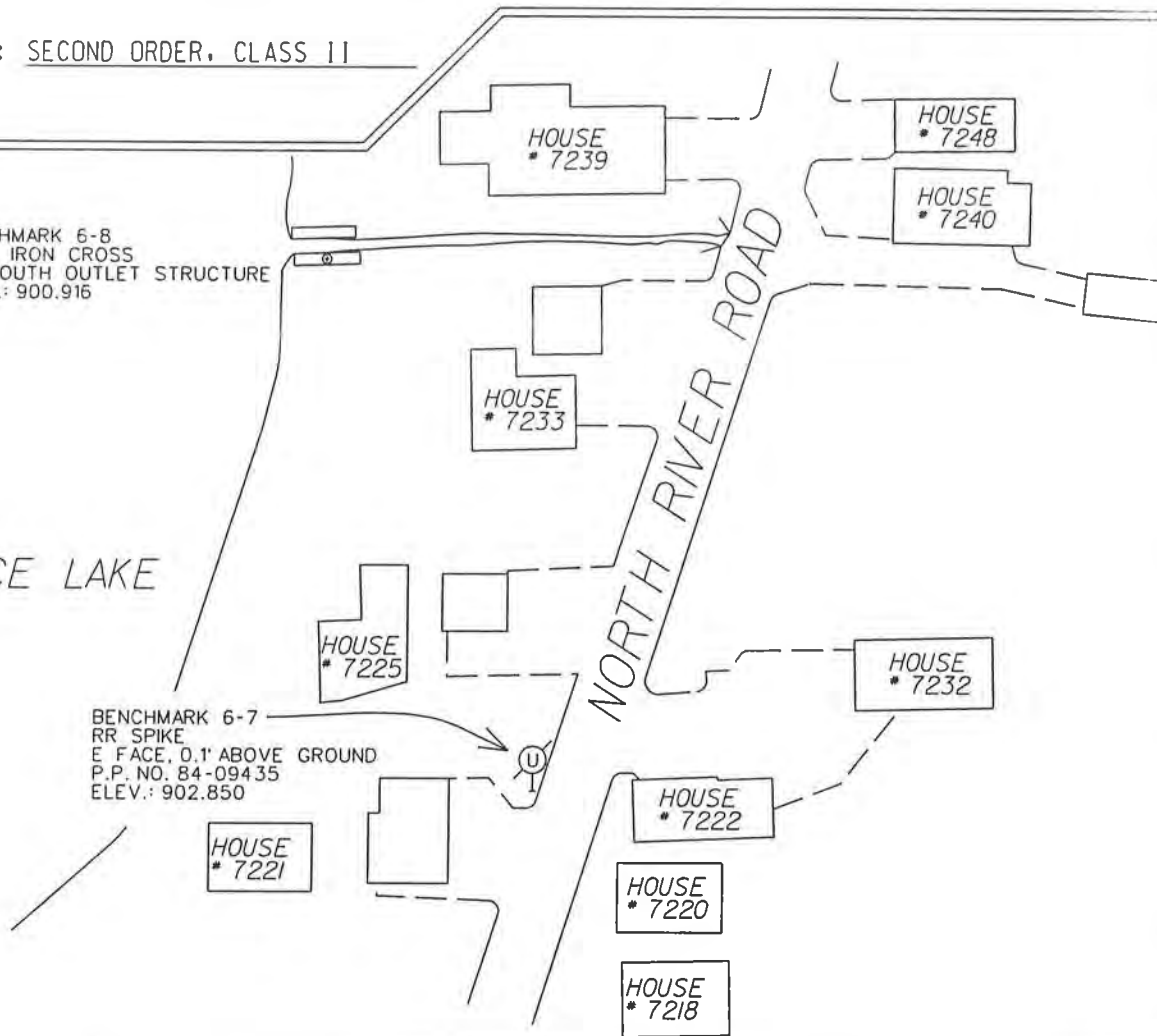
LOCATION SKETCH:



BENCHMARK 6-8
CAST IRON CROSS
ON SOUTH OUTLET STRUCTURE
ELEV.: 900.916

WALLACE LAKE

BENCHMARK 6-7
RR SPIKE
E FACE, 0.1' ABOVE GROUND
P.P. NO. 84-09435
ELEV.: 902.850



DETAILED DESCRIPTION:

Benchmark 6-7 is a railroad spike set in the east face of power pole number 84-09435.

Benchmark 6-8 is a cast iron cross found in the south side of an outlet structure.

RECOVERED BY: WASHINGTON COUNTY DATE: November 6, 2009

FORM PREPARED BY SOUTHEASTERN WISCONSIN REGIONAL PLANNING COMMISSION

RECORD OF VERTICAL CONTROL STATION

SECTION 6 T 11 N, R 20 E, WASHINGTON COUNTY, WISCONSIN

BENCH MARK NO.: 6-6

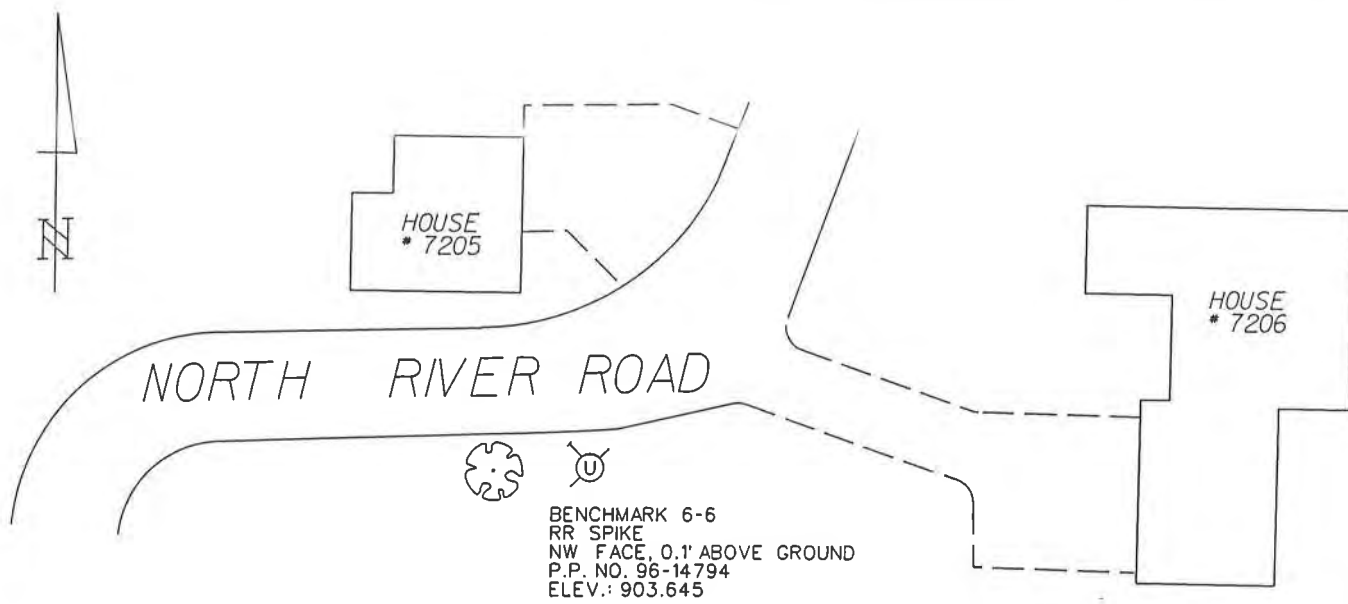
BM SET BY: WASHINGTON COUNTY

BM CONTROL SURVEY BY: WASHINGTON COUNTY

DATUM: NATIONAL GEODETIC VERTICAL DATUM OF 1929

CONTROL ACCURACY: SECOND ORDER, CLASS 11

LOCATION SKETCH:



DETAILED DESCRIPTION:

Benchmark 6-6 is a railroad spike set in the northwest face of power pole number 96-14794.

RECOVERED BY: WASHINGTON COUNTY DATE: November 6, 2009

FORM PREPARED BY SOUTHEASTERN WISCONSIN REGIONAL PLANNING COMMISSION

RECORD OF VERTICAL CONTROL STATION

SECTION 8 T. 11 N. R. 20 E. WASHINGTON COUNTY, WISCONSIN

BENCH MARK NO.: 2X86 ELEVATION 889.512

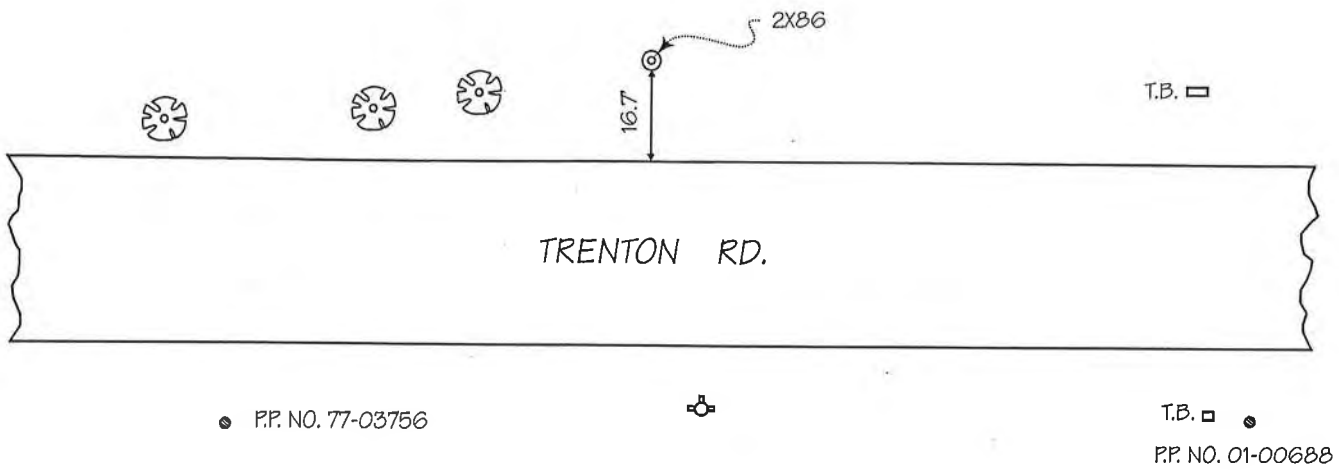
BM SET BY: WisDOT YEAR: 1999

BM CONTROL SURVEY BY: SEWRPC YEAR: 2005

DATUM: NATIONAL GEODETIC VERTICAL DATUM OF 1929

CONTROL ACCURACY: SECOND ORDER, CLASS II

LOCATION SKETCH:



DETAILED DESCRIPTION:

2X86 is a concrete monument with Wisconsin Department of Transportation brass cap. The monument is in 350'± north of STH 33.

RECOVERED BY: SEWRPC DATE: 20 MAY 2005

RECORD OF VERTICAL CONTROL STATION

SECTION 8 T. 11 N. R. 20 E. WASHINGTON COUNTY, WISCONSIN

BENCH MARK NO.: 2X87 ELEVATION 905.352

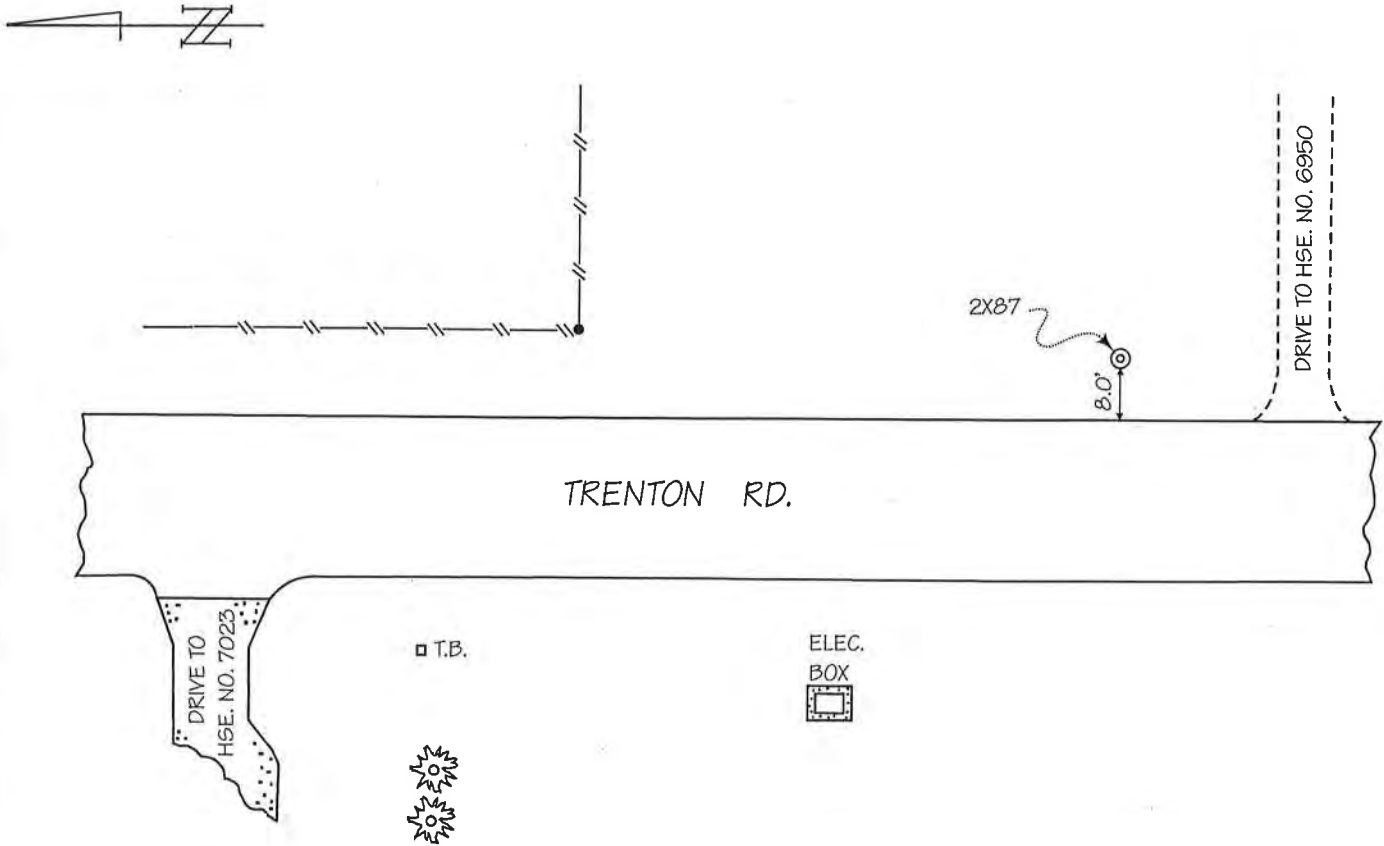
BM SET BY: WisDOT YEAR: 1999

BM CONTROL SURVEY BY: AERO-METRIC, INC. YEAR: 2004

DATUM: NATIONAL GEODETIC VERTICAL DATUM OF 1929

CONTROL ACCURACY: SECOND ORDER, CLASS II

LOCATION SKETCH:



DETAILED DESCRIPTION:

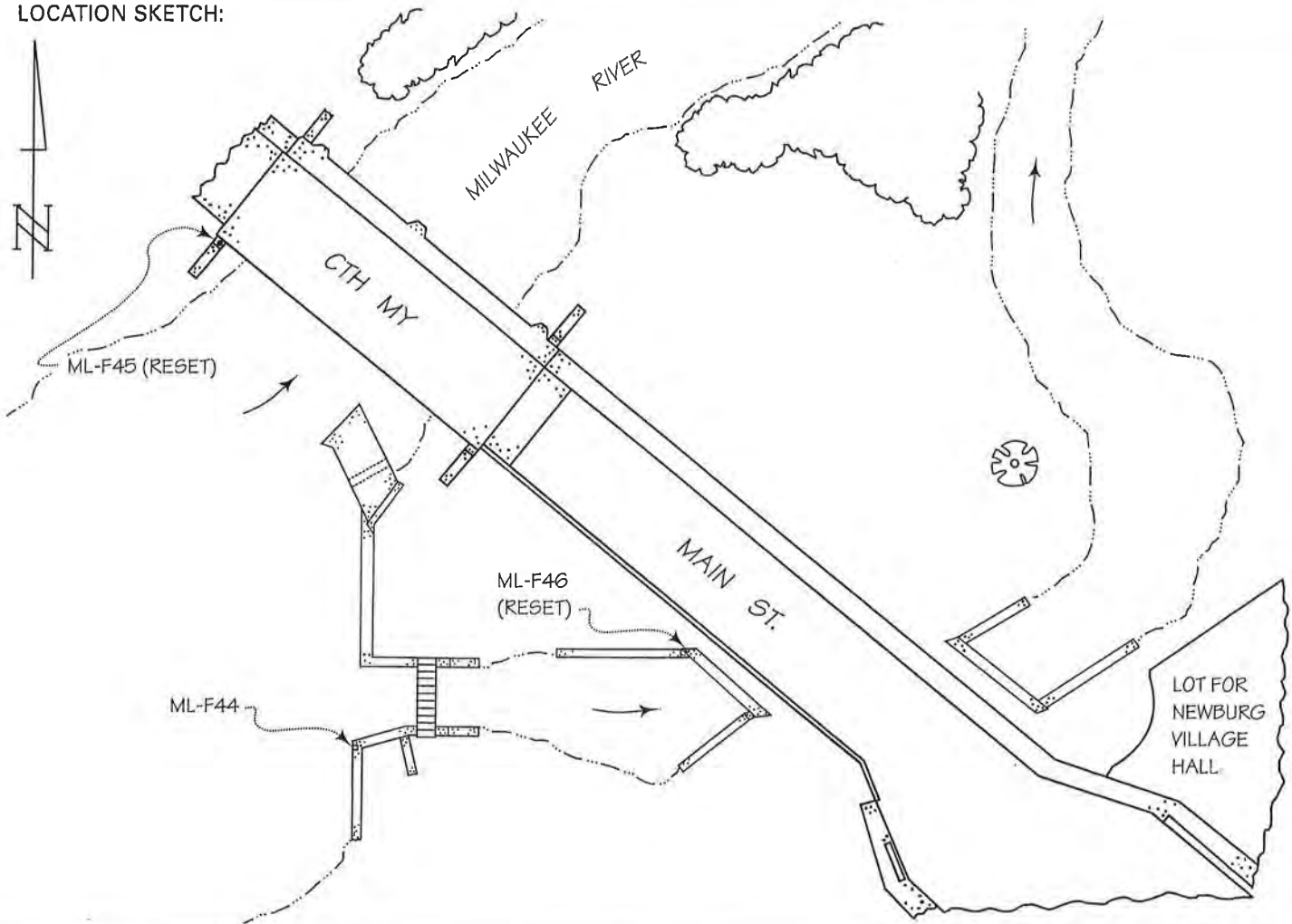
BM 2X87 is a concrete monument with Wisconsin Department of Transportation brass cap.

RECOVERED BY: SEWRPC DATE: 20 MAY 2005

RECORD OF VERTICAL CONTROL STATION

SECTION 12 T. 11 N. R. 20 E. WASHINGTON COUNTY, WISCONSIN
BENCH MARK NO.: ML-F44 ELEVATION 845.689
REFERENCE BENCH MARK NO.: ML-F45 (RESET) ELEVATION 855.550
REFERENCE BENCH MARK NO.: ML-F46 (RESET) ELEVATION 847.350
BM SET BY: ALSTER & ASSOCIATES, INC. YEAR: 1968
RBM ML-F45 (R) SET BY: WisDOT YEAR: 2003
RBM ML-F46 (R) SET BY: SEWRPC YEAR: 2005
BM CONTROL SURVEY BY: ALSTER & ASSOCIATES, INC. YEAR: 1968
RBM CONTROL SURVEY BY: SEWRPC YEAR: 2005
DATUM: NATIONAL GEODETIC VERTICAL DATUM OF 1929
CONTROL ACCURACY: SECOND ORDER, CLASS II

LOCATION SKETCH:



DETAILED DESCRIPTION:

ML-F44 is a chiseled cross in the top of the corner of a concrete wall.

ML-F45(RESET) is a Wisconsin Department of Transportation aluminum cap set in the top of the northwest concrete wingwall for bridge No. B-66-131.

ML-F46(RESET) is a chiseled square set in the top of the northwest end of the concrete headwall for bridge.

RECOVERED BY: SEWRPC DATE: 20 MAY 2005

RECORD OF VERTICAL CONTROL STATION

SECTION 12 T. 11 N. R. 20 E. WASHINGTON COUNTY, WISCONSIN

BENCH MARK NAME: TRENTON N GPS ELEVATION 872.848

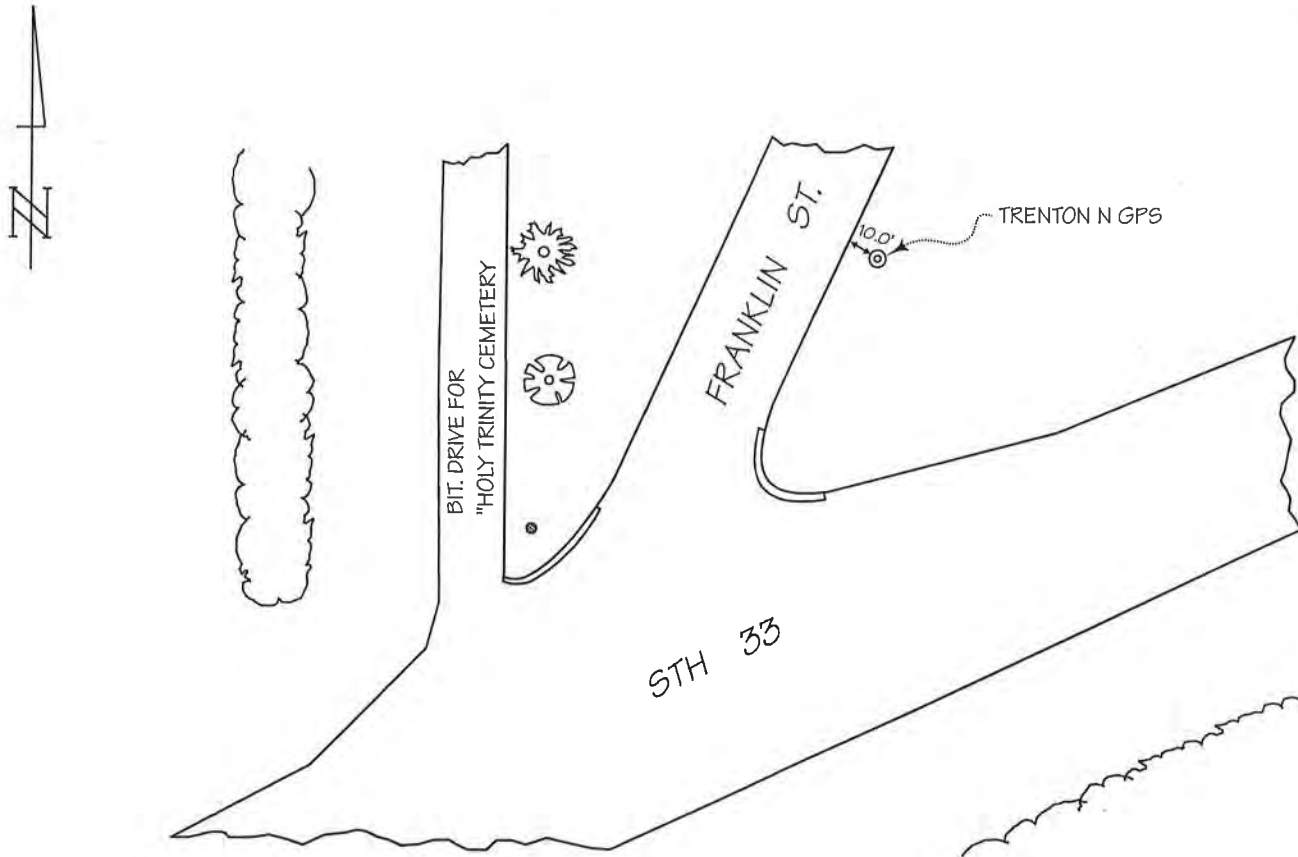
BM SET BY: WisDOT YEAR: 2000

BM CONTROL SURVEY BY: SEWRPC YEAR: 2005

DATUM: NATIONAL GEODETIC VERTICAL DATUM OF 1929

CONTROL ACCURACY: SECOND ORDER, CLASS II

LOCATION SKETCH:



DETAILED DESCRIPTION:

TRENTON N GPS is a concrete monument with Wisconsin Department of Transportation brass cap.

RECOVERED BY: SEWRPC DATE: 20 MAY 2005

RECORD OF VERTICAL CONTROL STATION

SECTION 14 T. 11 N. R. 20 E. WASHINGTON COUNTY, WISCONSIN

BENCH MARK NO.: 2L03 ELEVATION 877.563

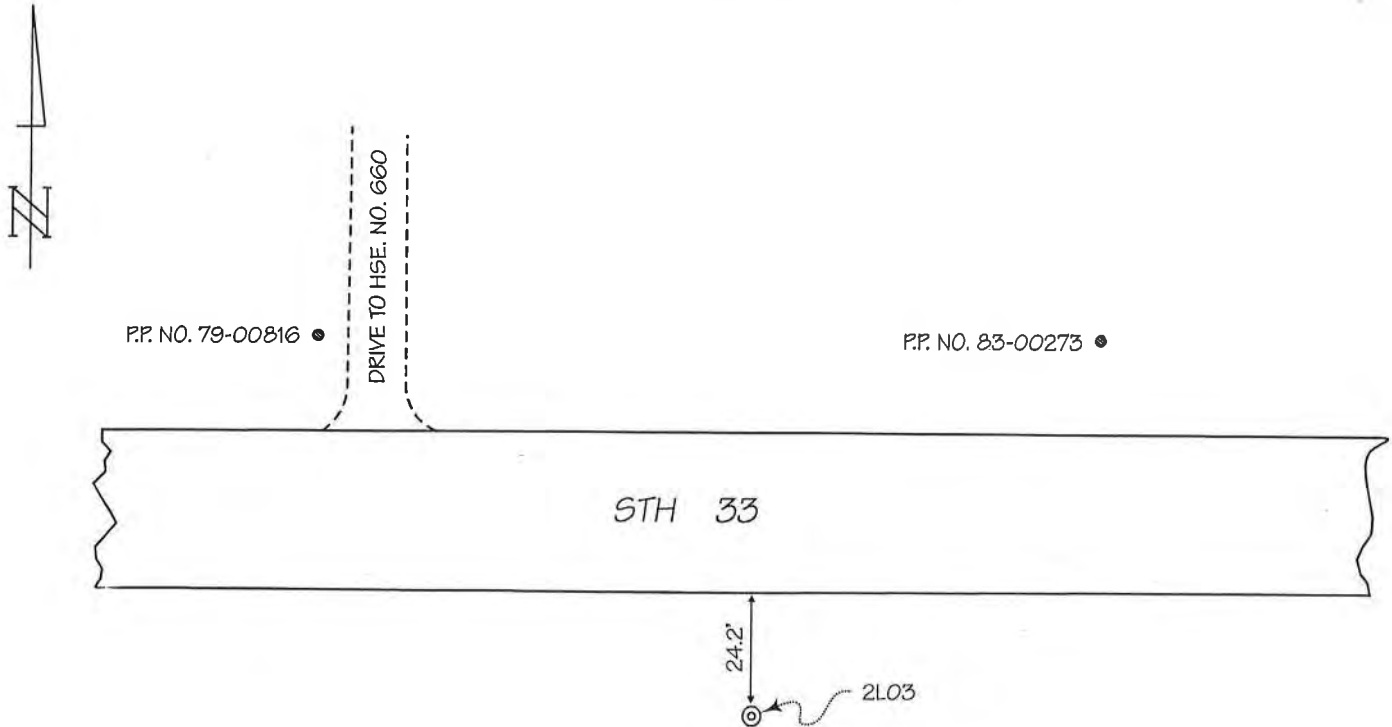
BM SET BY: WisDOT YEAR: 2000

BM CONTROL SURVEY BY: SEWRPC YEAR: 2005

DATUM: NATIONAL GEODETIC VERTICAL DATUM OF 1929

CONTROL ACCURACY: SECOND ORDER, CLASS II

LOCATION SKETCH:



DETAILED DESCRIPTION:

2L03 is a concrete monument with Wisconsin Department of Transportation brass cap.

RECOVERED BY: SEWRPC DATE: 20 MAY 2005

RECORD OF VERTICAL CONTROL STATION

SECTION 14 T. 11 N. R. 20 E. WASHINGTON COUNTY, WISCONSIN

BENCH MARK NO.: 605 ELEVATION 866.893

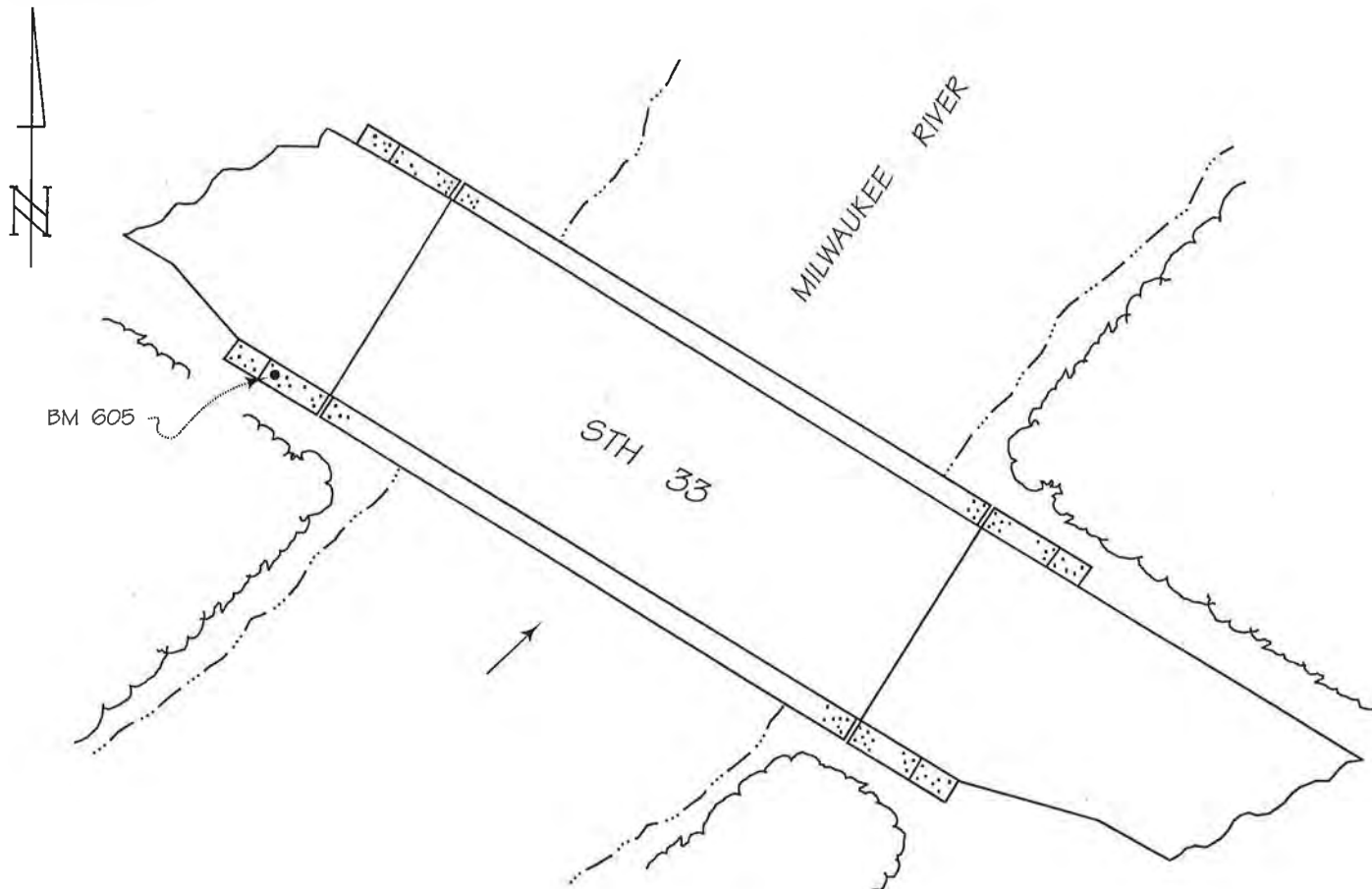
BM SET BY: WisDOT YEAR: 1981

BM CONTROL SURVEY BY: AERO-METRIC, INC. YEAR: 1994

DATUM: NATIONAL GEODETIC VERTICAL DATUM OF 1929

CONTROL ACCURACY: SECOND ORDER, CLASS II

LOCATION SKETCH:



DETAILED DESCRIPTION:

BM 605 is a concrete monument with Wisconsin Department of Transportation aluminum cap set in the top of the northwest end of the concrete parapet wall of bridge No. B-66-93-81, 2.7 ft. above pavement surface.

RECOVERED BY: SEWRPC DATE: 20 MAY 2005

RECORD OF VERTICAL CONTROL STATION

SECTION 15 T. 11 N. R. 20 E. WASHINGTON COUNTY, WISCONSIN

BENCH MARK NO.: 2L02 ELEVATION 869.049

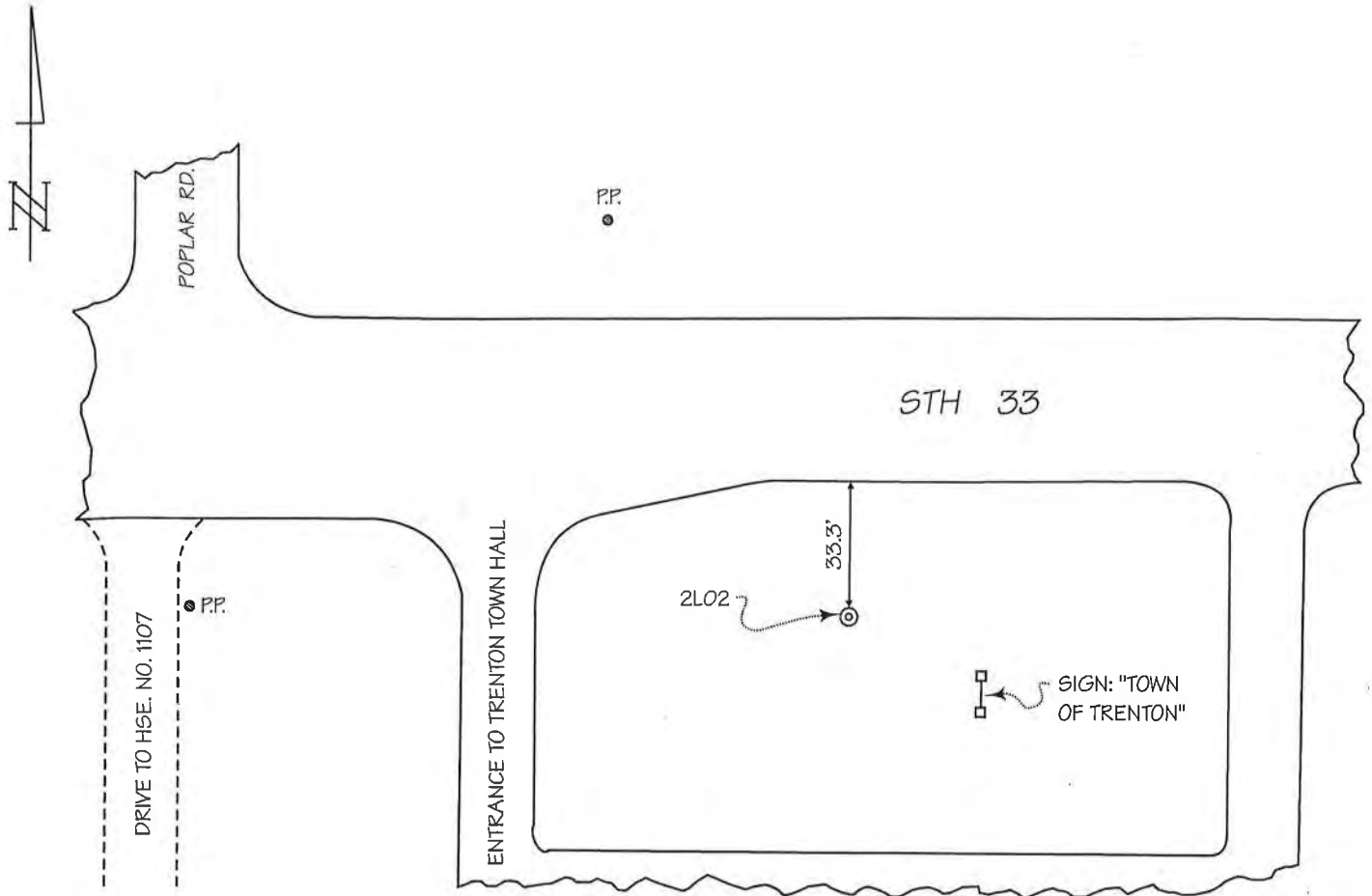
BM SET BY: WisDOT YEAR: 2000

BM CONTROL SURVEY BY: SEWRPC YEAR: 2005

DATUM: NATIONAL GEODETIC VERTICAL DATUM OF 1929

CONTROL ACCURACY: SECOND ORDER, CLASS II

LOCATION SKETCH:



DETAILED DESCRIPTION:

BM 2L02 is a concrete monument with Wisconsin Department of Transportation brass cap.

RECOVERED BY: SEWRPC DATE: 20 MAY 2005

RECORD OF VERTICAL CONTROL STATION

SECTION 17 T. 11 N. R. 20 E. WASHINGTON COUNTY, WISCONSIN

BENCH MARK NAME: WEST BEND GPS ELEVATION 883.256

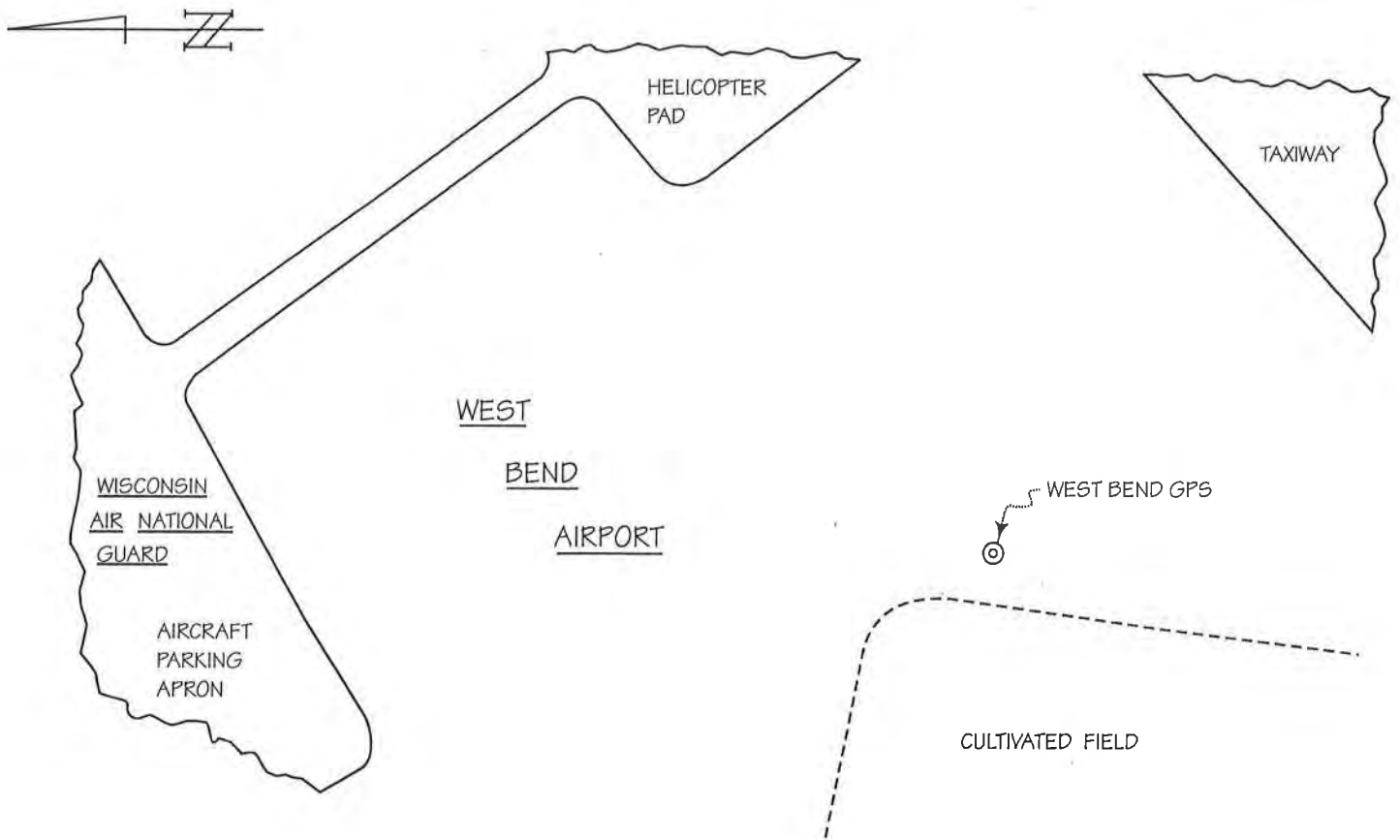
BM SET BY: WisDOT YEAR: 1989

BM CONTROL SURVEY BY: SEWRPC YEAR: 2005

DATUM: NATIONAL GEODETIC VERTICAL DATUM OF 1929

CONTROL ACCURACY: SECOND ORDER, CLASS II

LOCATION SKETCH:



DETAILED DESCRIPTION:

WEST BEND GPS is a concrete monument with a National Geodetic Survey brass cap.

RECOVERED BY: SEWRPC DATE: 17 MAY 2005

RECORD OF VERTICAL CONTROL STATION

SECTION 17 T. 11 N. R. 20 E. WASHINGTON COUNTY, WISCONSIN

BENCH MARK NAME: WEST BEND GPS AZ MK ELEVATION 877.401

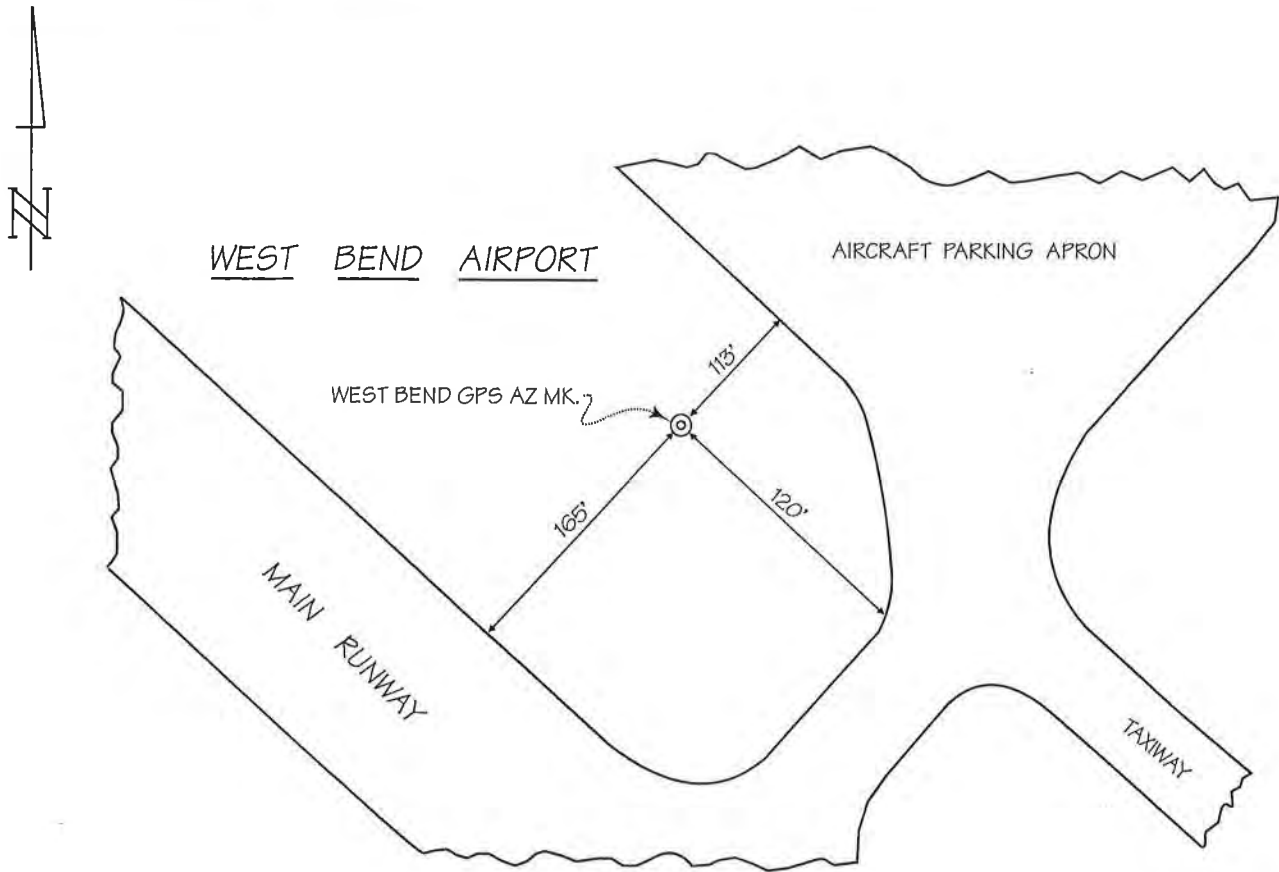
BM SET BY: WisDOT YEAR: 1989

BM CONTROL SURVEY BY: SEWRPC YEAR: 2005

DATUM: NATIONAL GEODETIC VERTICAL DATUM OF 1929

CONTROL ACCURACY: SECOND ORDER, CLASS II

LOCATION SKETCH:



DETAILED DESCRIPTION:

WEST BEND GPS AZ. MK. is a concrete monument with a National Geodetic Survey brass cap.

RECOVERED BY: SEWRPC DATE: 17 MAY 2005

RECORD OF VERTICAL CONTROL STATION

SECTION 19 T. 11 N. R. 20 E. WASHINGTON COUNTY, WISCONSIN

BENCH MARK NO.: 2X84 ELEVATION 927.102

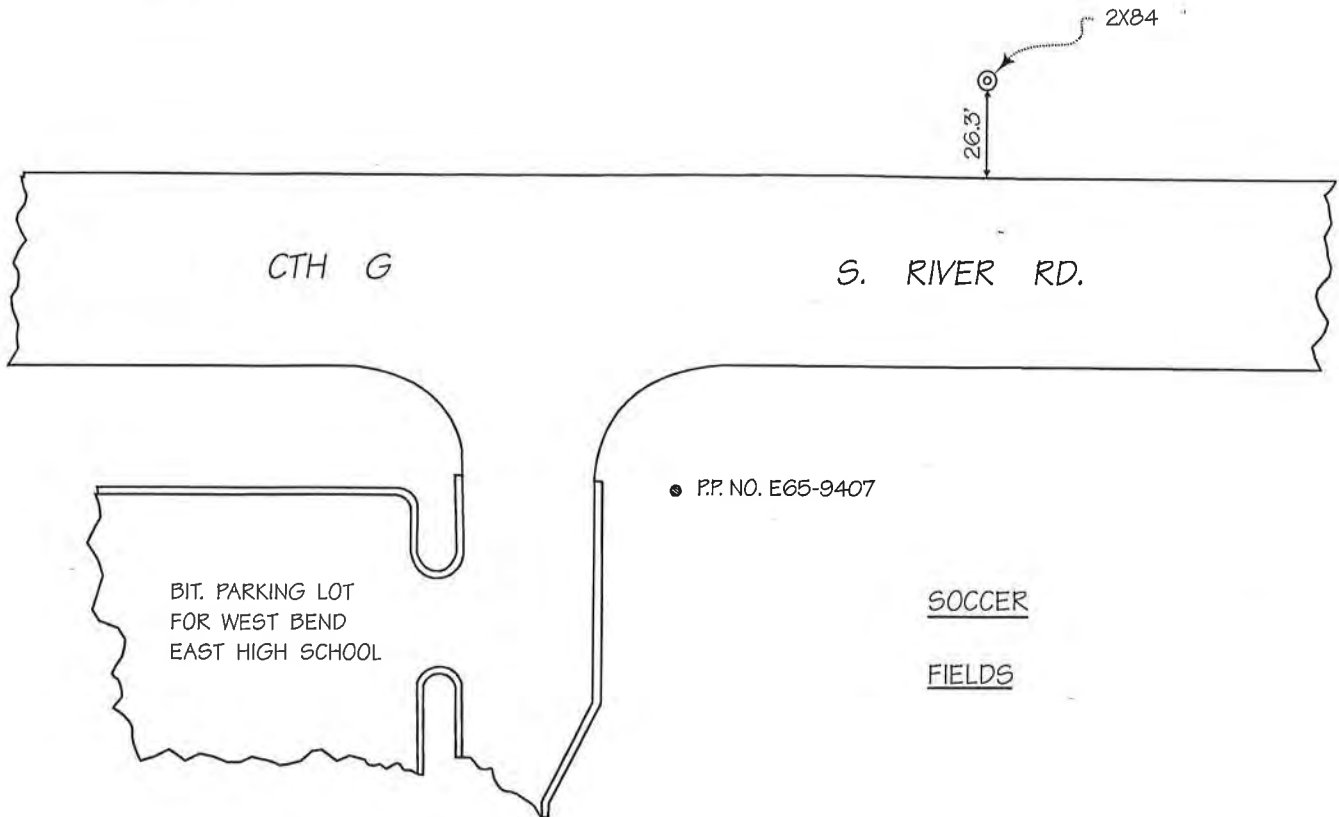
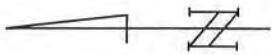
BM SET BY: WisDOT YEAR: 1999

BM CONTROL SURVEY BY: SEWRPC YEAR: 2005

DATUM: NATIONAL GEODETIC VERTICAL DATUM OF 1929

CONTROL ACCURACY: SECOND ORDER, CLASS II

LOCATION SKETCH:



DETAILED DESCRIPTION:

2X84 is a concrete monument with Wisconsin Department of Transportation brass cap located approximately 0.2 mi. south of E. Decorah Road (CTH I).

RECOVERED BY: SEWRPC DATE: 6 MAY 2005

RECORD OF VERTICAL CONTROL STATION

SECTION 25 T. 11 N. R. 20 E. WASHINGTON COUNTY, WISCONSIN

BENCH MARK NAME: TRENTON E GPS ELEVATION 896.328

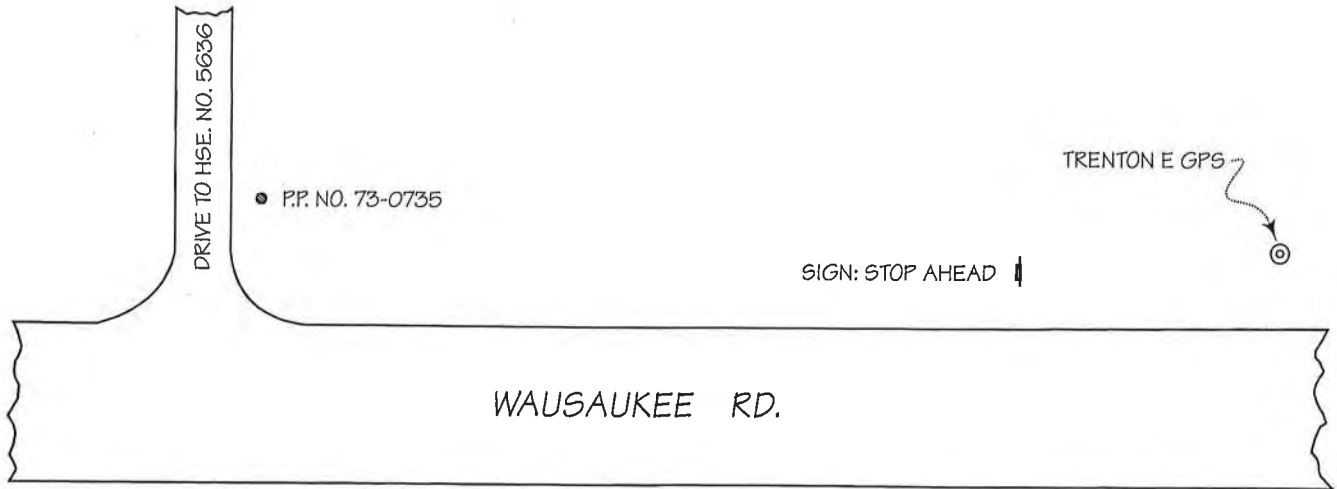
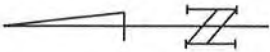
BM SET BY: WisDOT YEAR: 2000

BM CONTROL SURVEY BY: SEWRPC YEAR: 2005

DATUM: NATIONAL GEODETIC VERTICAL DATUM OF 1929

CONTROL ACCURACY: SECOND ORDER, CLASS II

LOCATION SKETCH:



DETAILED DESCRIPTION:

TRENTON E GPS is a concrete monument with Wisconsin Department of Transportation brass cap. The monument is 350'± south of drive to house No. 5636 and 0.25 mile south of Knollwood Rd.

RECOVERED BY: SEWRPC DATE: 20 MAY 2005