



# WAYNE BENCHMARKS

This is a PDF of **all mapped Benchmarks 1997 forward** in T12E R18W ordered by section number.

For pre-1997 benchmarks, click to view [index map and scanned images of benchmark sheets.](#)

Please scroll to your desired benchmark.



For more information or to report problems, contact:  
Scott M. Schmidt, PE, RLS  
Washington County Engineer/Surveyor  
Washington County Public Agency Center (PAC)  
333 East Washington St, Suite 2300  
P.O. Box 2003  
West Bend, WI 53095-2003  
Phone: 262-335-6881  
Fax: 262-335-4171  
Email: [scott.schmidt@co.washington.wi.us](mailto:scott.schmidt@co.washington.wi.us)

RECORD OF VERTICAL CONTROL STATION

SECTION 1 T. 12 N. R. 18 E. WASHINGTON COUNTY, WISCONSIN

BENCH MARK NAME: ASHFORD S GPS AZ. MRK. ELEVATION 1016.552

BM SET BY: FOND DU LAC COUNTY YEAR: 1993

BM CONTROL SURVEY BY: AERO-METRIC, INC. YEAR: 2004

DATUM: NATIONAL GEODETIC VERTICAL DATUM OF 1929

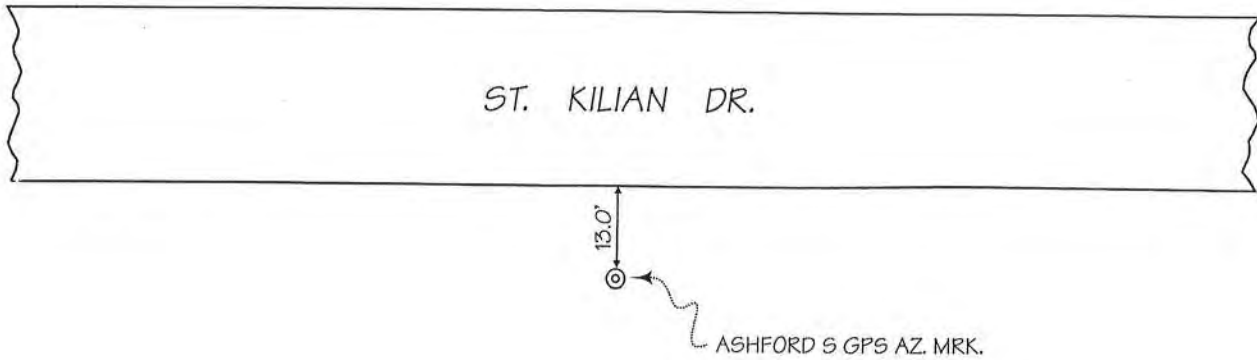
CONTROL ACCURACY: SECOND ORDER, CLASS II

LOCATION SKETCH:



• P.P. NO. 70-25434

P.P. NO. 70-25433 •



DETAILED DESCRIPTION:

ASHFORD S GPS AZ. MRK is a concrete monument with a Wisconsin County GPS Network Geodetic Control, Fond du Lac County brass cap. Monument is 450' west of drive to number W4991.

RECOVERED BY: SEWRPC DATE: 25 FEBRUARY 2005

**RECORD OF VERTICAL CONTROL STATION**

SECTION 1 T. 12 N. R. 18 E. WASHINGTON COUNTY, WISCONSIN

BENCH MARK NO.: 3K12 ELEVATION 1057.961

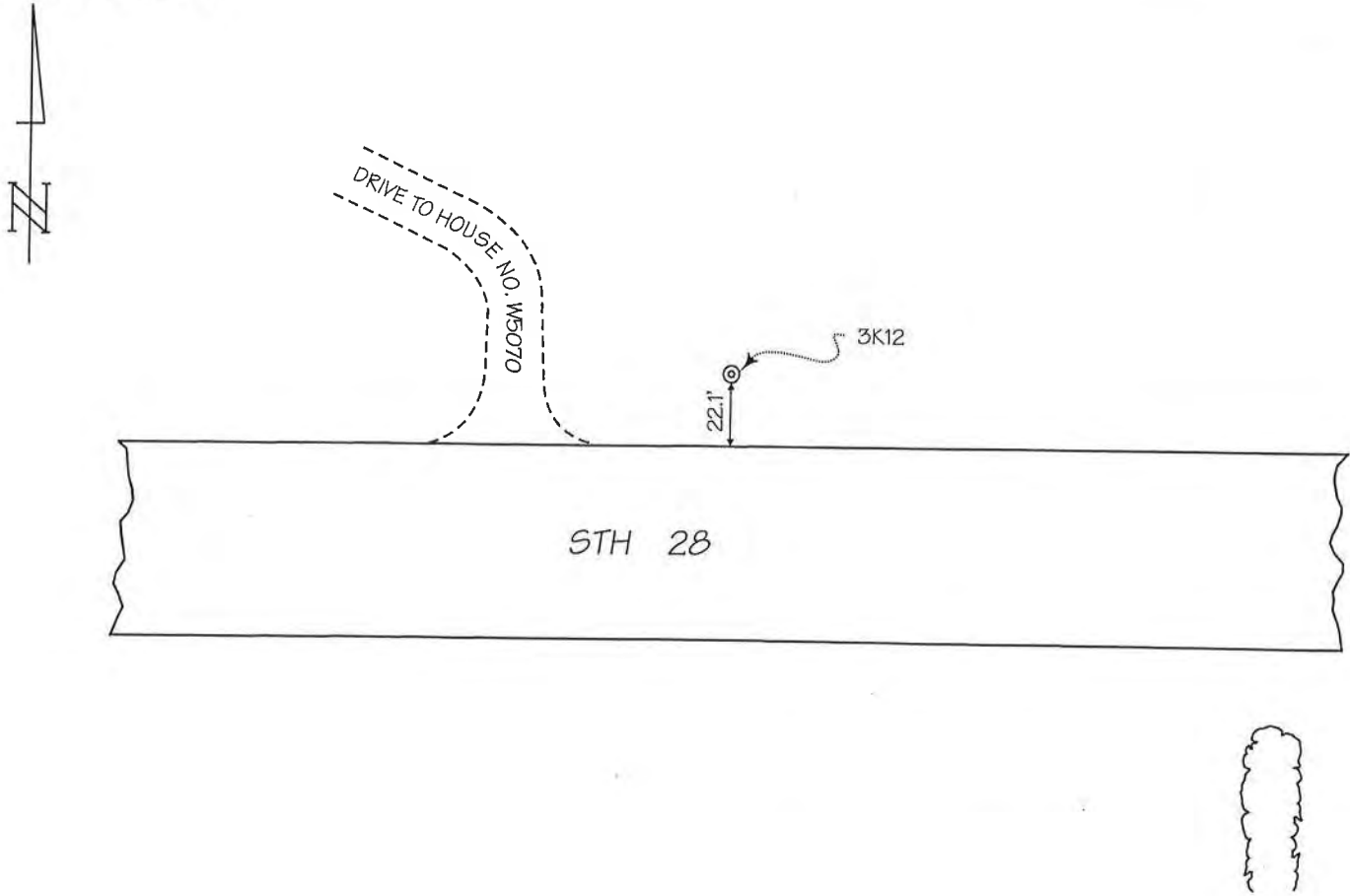
BM SET BY: WisDOT YEAR: 1999

BM CONTROL SURVEY BY: AERO-METRIC, INC. YEAR: 2004

DATUM: NATIONAL GEODETIC VERTICAL DATUM OF 1929

CONTROL ACCURACY: SECOND ORDER, CLASS II

LOCATION SKETCH:



DETAILED DESCRIPTION:

3K12 is a concrete monument with Wisconsin Department of Transportation brass cap. The monument is 450'± east of S 1/4 corner Section 1, T12N R18E.

RECOVERED BY: SEWRPC DATE: 25 FEBRUARY 2005

**RECORD OF VERTICAL CONTROL STATION**

SECTION 6 T. 12 N. R. 18 E. WASHINGTON COUNTY, WISCONSIN

BENCH MARK NO.: 3K08 ELEVATION 980.161

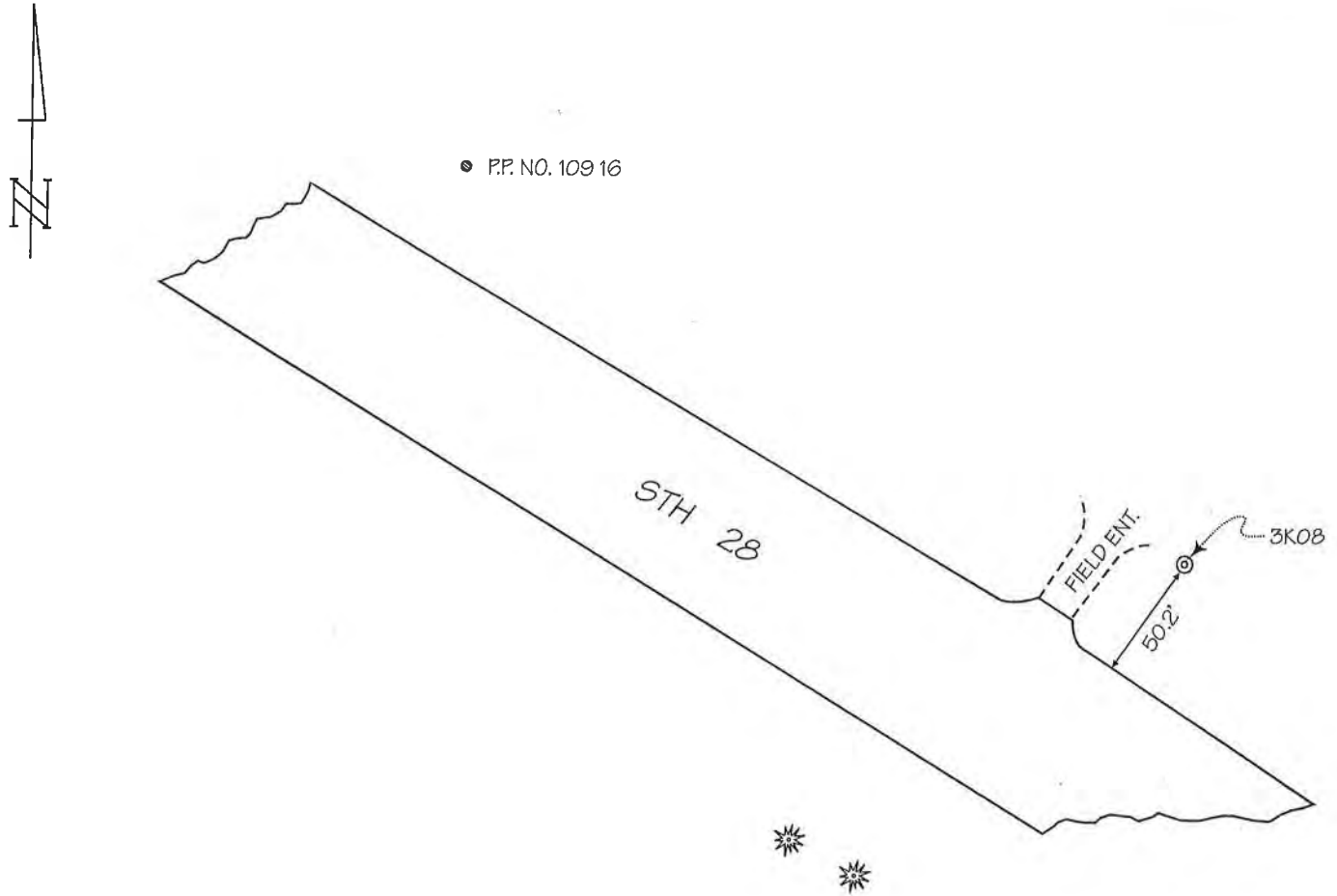
BM SET BY: WisDOT YEAR: 1999

BM CONTROL SURVEY BY: SEWRPC YEAR: 2005

DATUM: NATIONAL GEODETIC VERTICAL DATUM OF 1929

CONTROL ACCURACY: SECOND ORDER, CLASS II

LOCATION SKETCH:



DETAILED DESCRIPTION:

3K08 is a concrete monument with Wisconsin Department of Transportation brass cap. The monument is 0.2 miles southeast of Skyline Dr.

RECOVERED BY: SEWRPC DATE: 25 FEBRUARY 2005

**RECORD OF VERTICAL CONTROL STATION**

SECTION 6 T. 12 N. R. 18 E. WASHINGTON COUNTY, WISCONSIN

BENCH MARK NO.: 662 ELEVATION 957.412

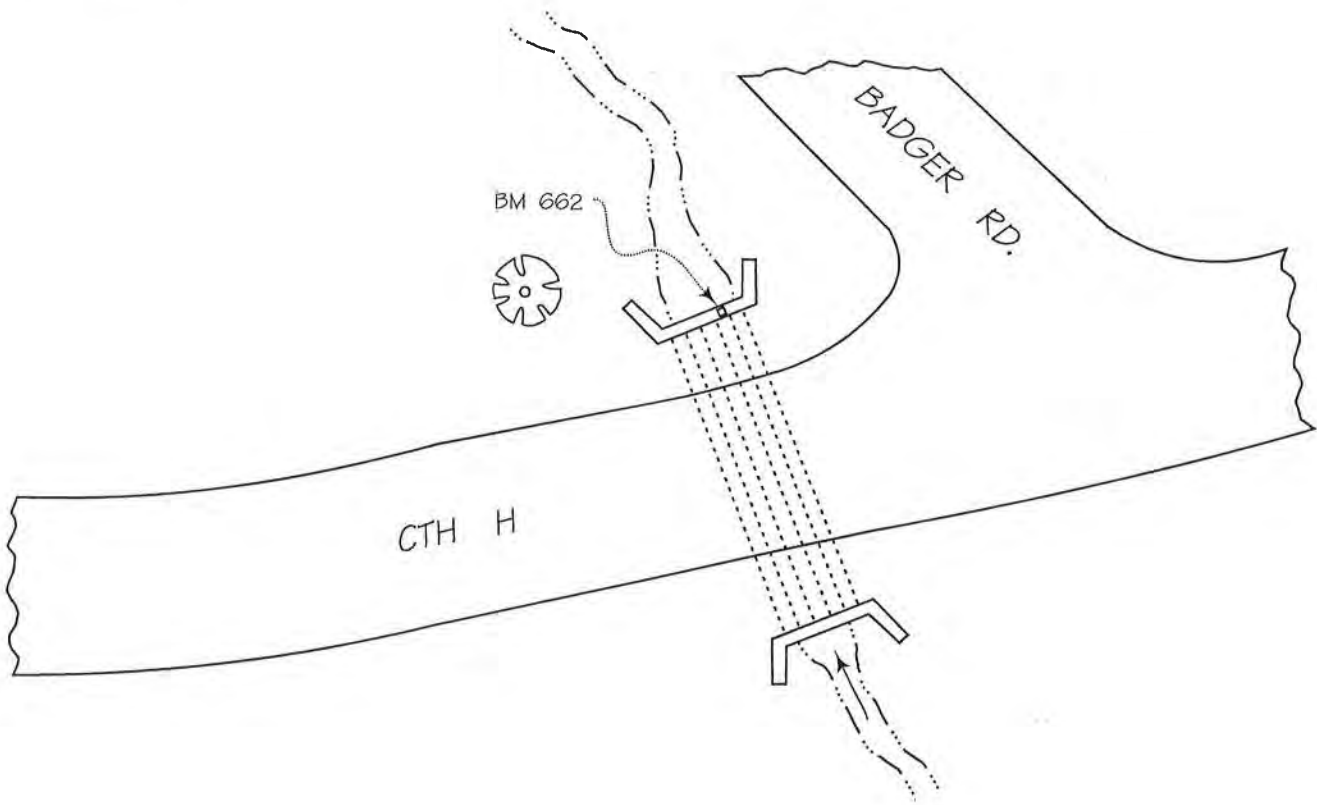
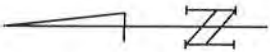
BM SET BY: AERO-METRIC, INC. YEAR: 2004

BM CONTROL SURVEY BY: AERO-METRIC, INC. YEAR: 2004

DATUM: NATIONAL GEODETIC VERTICAL DATUM OF 1929

CONTROL ACCURACY: SECOND ORDER, CLASS II

LOCATION SKETCH:



DETAILED DESCRIPTION:

Benchmark 662 is a chiseled square in top of a concrete endwall for a triple 48" diameter culvert. The chiseled square is between the middle and southeasterly culvert.

RECOVERED BY: SEWRPC DATE: 25 FEBRUARY 2005

RECORD OF VERTICAL CONTROL STATION

SECTION 10 T. 12 N. R. 18 E. WASHINGTON COUNTY, WISCONSIN

BENCH MARK NO.: 3K10 ELEVATION 1079.600

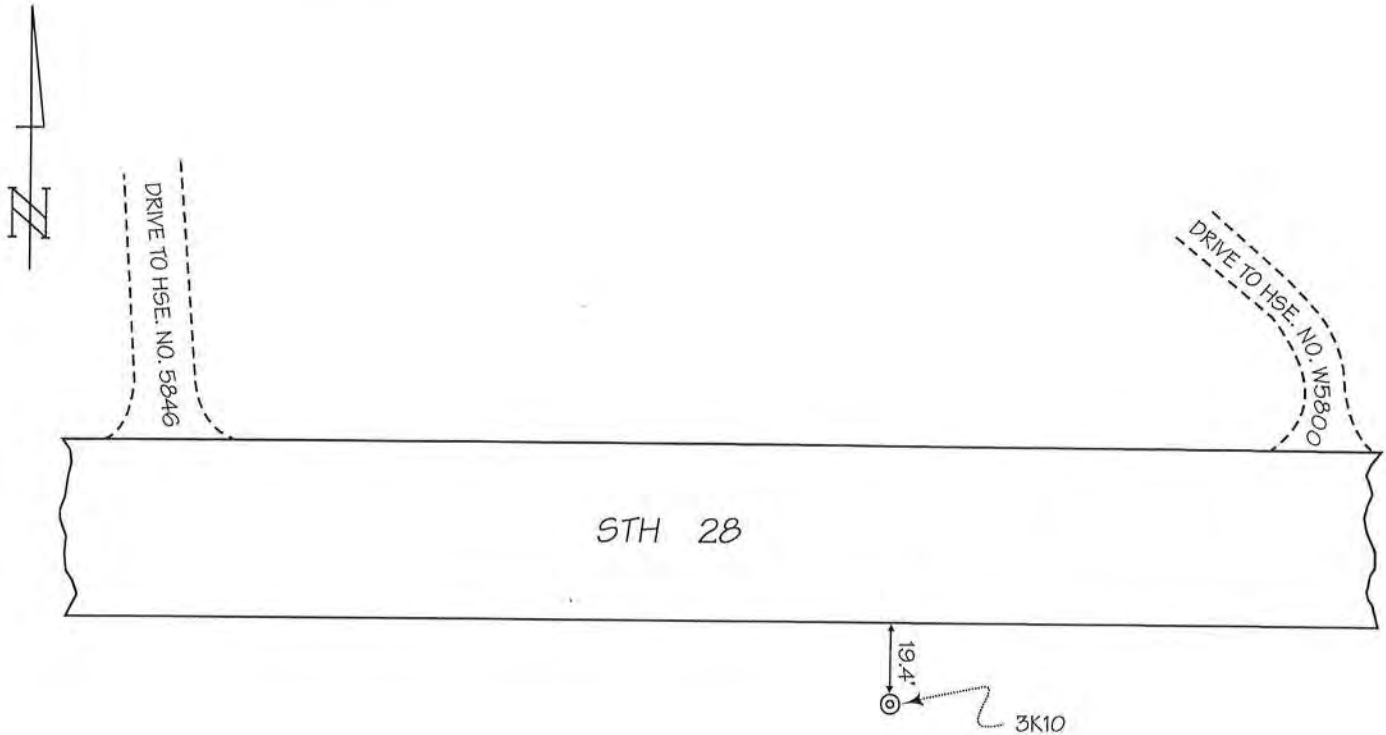
BM SET BY: WisDOT YEAR: 1999

BM CONTROL SURVEY BY: AERO-METRIC, INC. YEAR: 2004

DATUM: NATIONAL GEODETIC VERTICAL DATUM OF 1929

CONTROL ACCURACY: SECOND ORDER, CLASS II

LOCATION SKETCH:



DETAILED DESCRIPTION:

3K10 is a concrete monument with Wisconsin Department of Transportation brass cap.

RECOVERED BY: SEWRPC DATE: 25 FEBRUARY 2005

**RECORD OF VERTICAL CONTROL STATION**

SECTION 13 T. 12 N. R. 18 E. WASHINGTON COUNTY, WISCONSIN

BENCH MARK NO.: 121 ELEVATION 1028.978

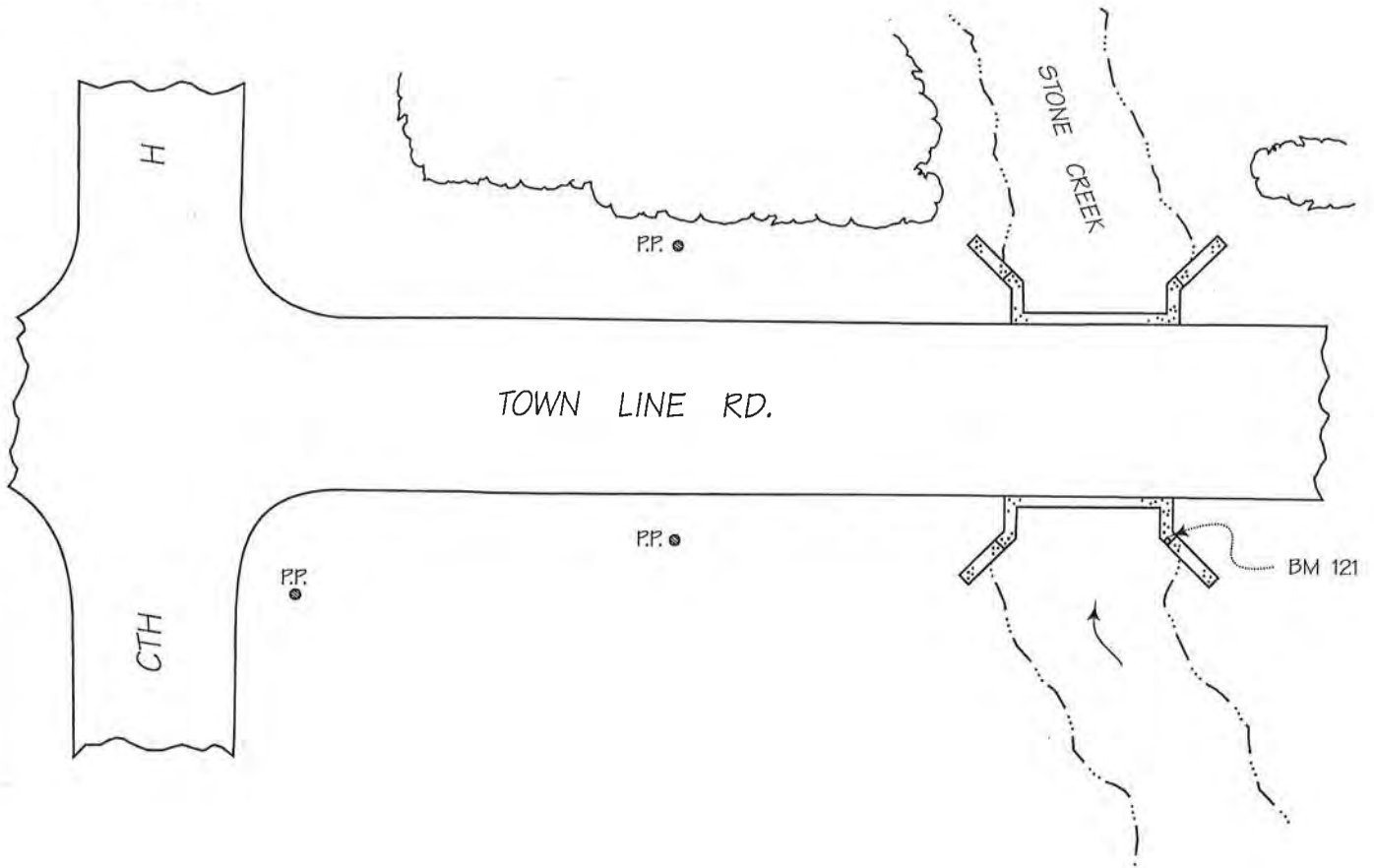
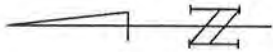
BM SET BY: AERO-METRIC, INC. YEAR: 2004

BM CONTROL SURVEY BY: AERO-METRIC, INC. YEAR: 2004

DATUM: NATIONAL GEODETIC VERTICAL DATUM OF 1929

CONTROL ACCURACY: SECOND ORDER, CLASS II

LOCATION SKETCH:



**DETAILED DESCRIPTION:**

Benchmark 121 is a chiseled square set in the top of the southwest concrete wingwall of bridge. The Benchmark is 375'± south of CTH H.

RECOVERED BY: SEWRPC DATE: 7 MARCH 2005

RECORD OF VERTICAL CONTROL STATION

SECTION 15 T. 12 N. R. 18 E. WASHINGTON COUNTY, WISCONSIN

BENCH MARK NO.: TT19 ELEVATION 1053.377

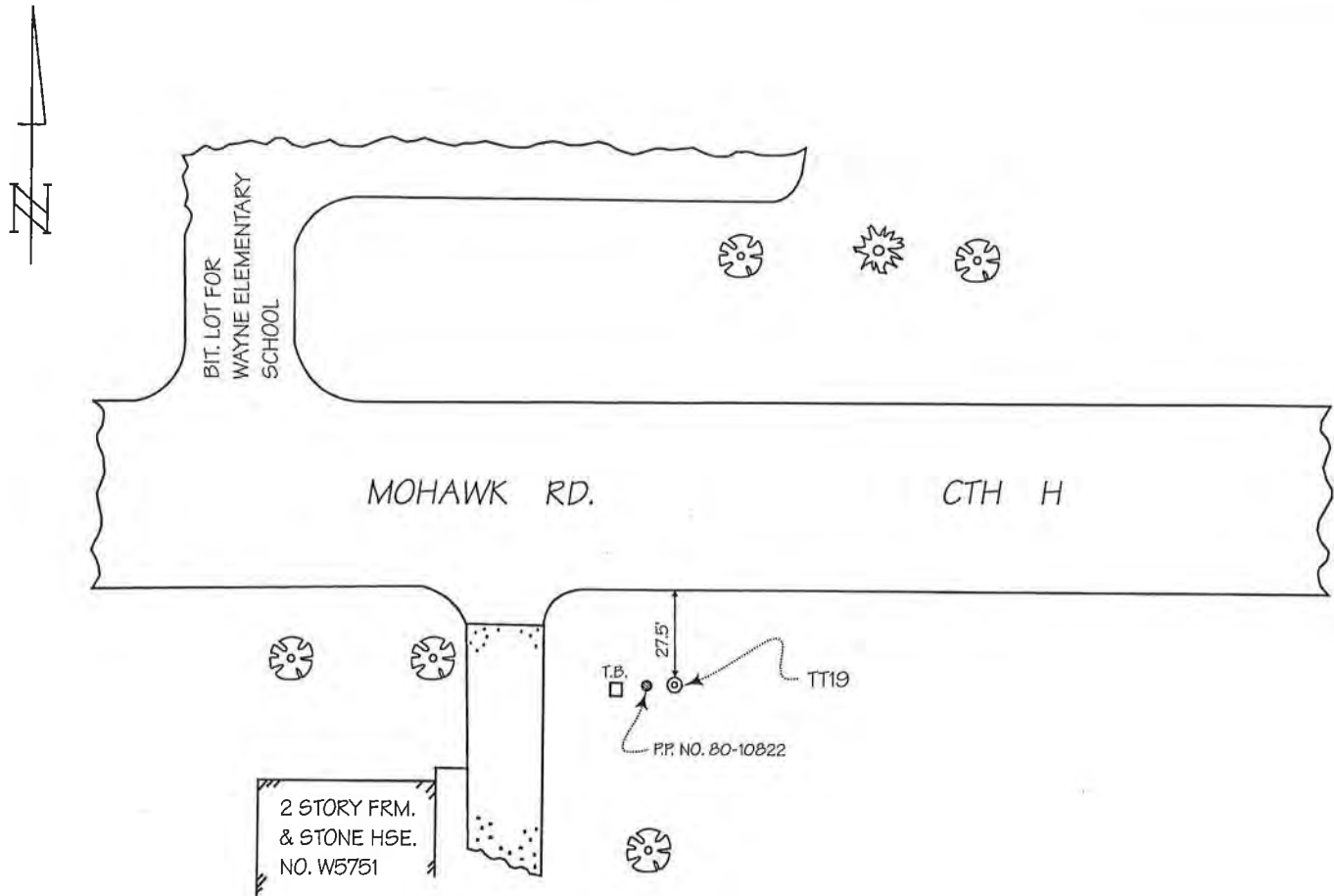
BM SET BY: U.S. DEPT. OF INTERIOR YEAR: 1980

BM CONTROL SURVEY BY: AERO-METRIC, INC. YEAR: 2004

DATUM: NATIONAL GEODETIC VERTICAL DATUM OF 1929

CONTROL ACCURACY: SECOND ORDER, CLASS II

LOCATION SKETCH:



DETAILED DESCRIPTION:

TT19 is a concrete monument with a U.S. Department of Interior Geodetic Survey aluminum cap, 1.3 ft. east of a power pole. The monument is stamped "TT19 JNF 1980."

RECOVERED BY: SEWRPC DATE: 14 MARCH 2005



**RECORD OF VERTICAL CONTROL STATION**

SECTION 15 T. 12 N. R. 18 E. WASHINGTON COUNTY, WISCONSIN

BENCH MARK NAME: WAYNE N GPS ELEVATION 1045.591

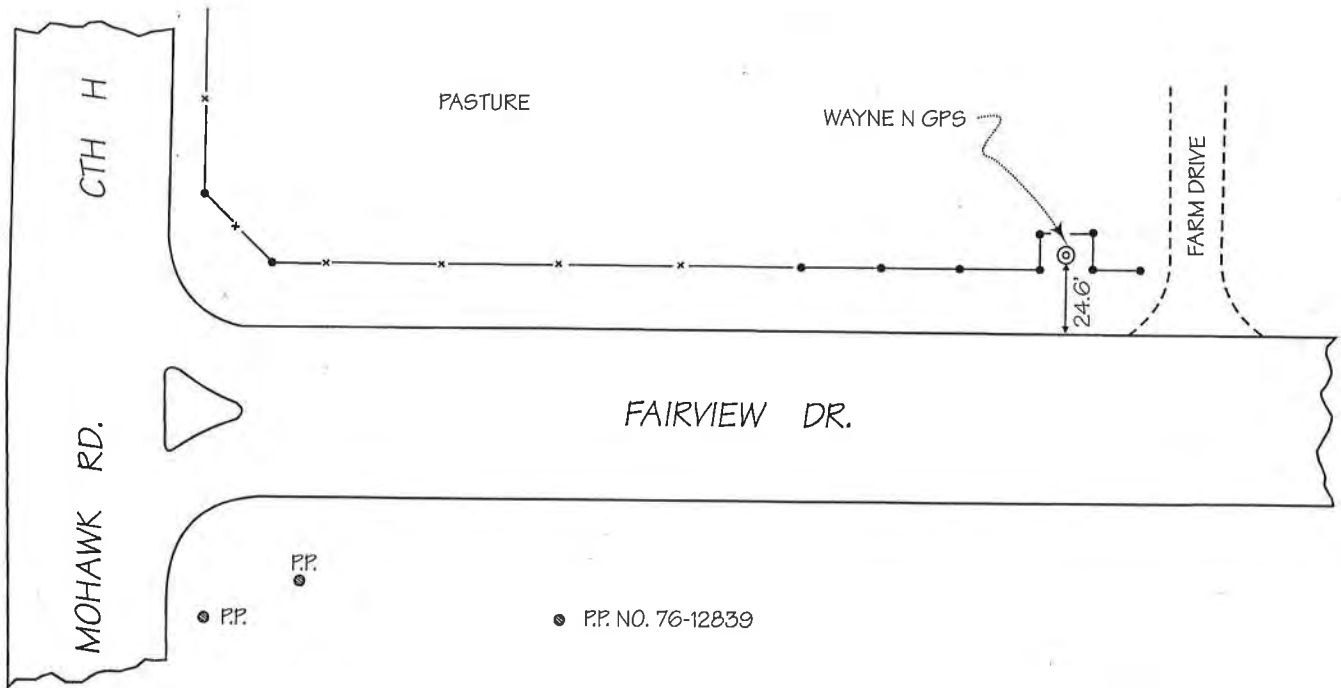
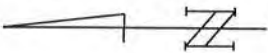
BM SET BY: WisDOT YEAR: 1999

BM CONTROL SURVEY BY: AERO-METRIC, INC. YEAR: 2004

DATUM: NATIONAL GEODETIC VERTICAL DATUM OF 1929

CONTROL ACCURACY: SECOND ORDER, CLASS II

LOCATION SKETCH:



DETAILED DESCRIPTION:

WAYNE N GPS is a concrete monument with a Wisconsin Department of Transportation brass cap. The monument is 350'± south of Mohawk Rd.

RECOVERED BY: SEWRPC DATE: 8 MARCH 2005

**RECORD OF VERTICAL CONTROL STATION**

SECTION 17 T. 12 N. R. 18 E. WASHINGTON COUNTY, WISCONSIN

BENCH MARK NO.: 955 ELEVATION 1024.097

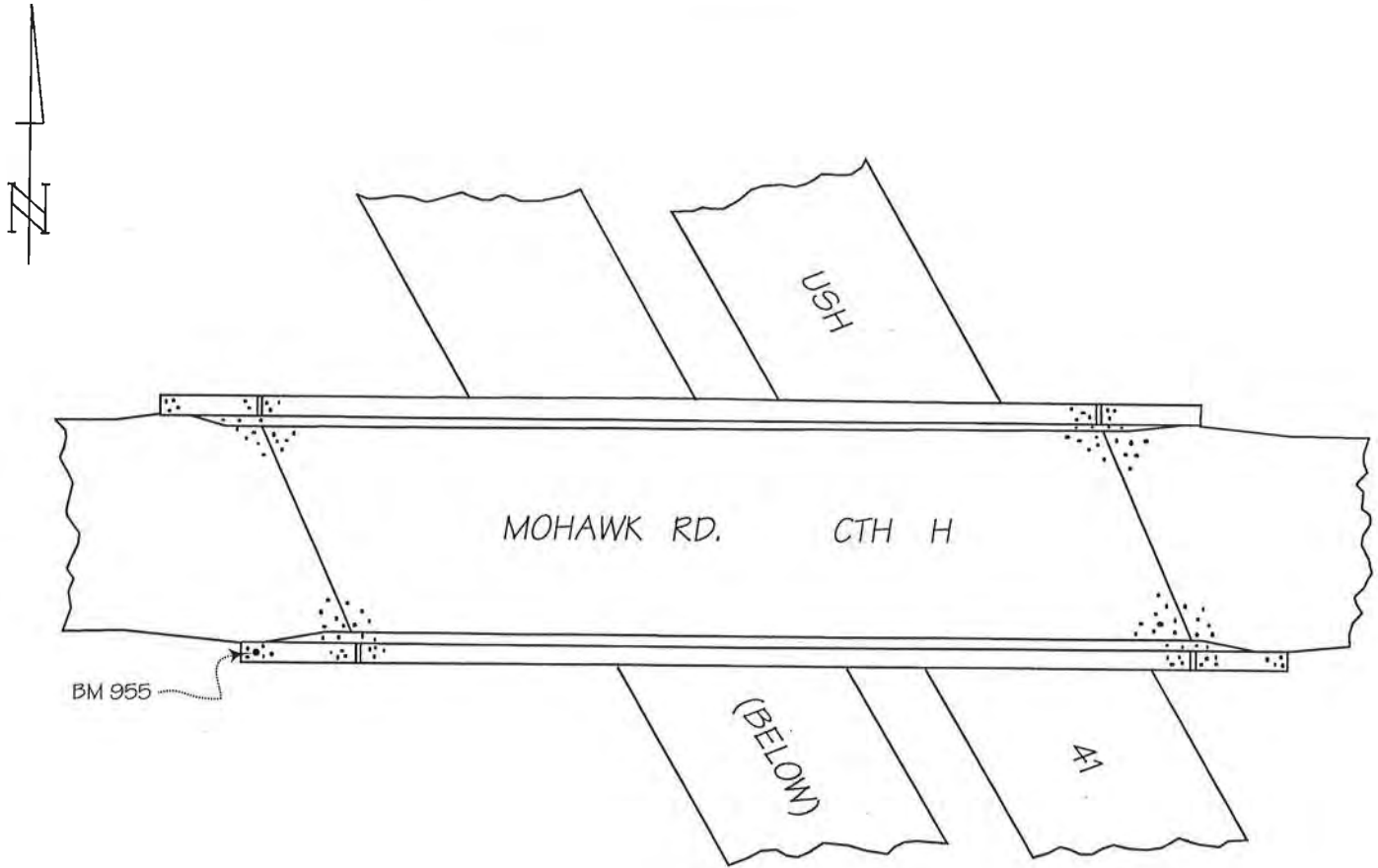
BM SET BY: WisDOT YEAR: 1993

BM CONTROL SURVEY BY: AERO-METRIC, INC. YEAR: 2004

DATUM: NATIONAL GEODETIC VERTICAL DATUM OF 1929

CONTROL ACCURACY: SECOND ORDER, CLASS II

LOCATION SKETCH:



DETAILED DESCRIPTION:

Benchmark 955 is a WisDOT aluminum cap set in the top of the west end of the southwest concrete parapet wall of bridge No. B-66-113-93, 2.8 ft. above the pavement surface.

RECOVERED BY: SEWRPC DATE: 7 MARCH 2005

RECORD OF VERTICAL CONTROL STATION

SECTION 23 T. 12 N. R. 18 E. WASHINGTON COUNTY, WISCONSIN

BENCH MARK NO.: 122 ELEVATION 1018.893

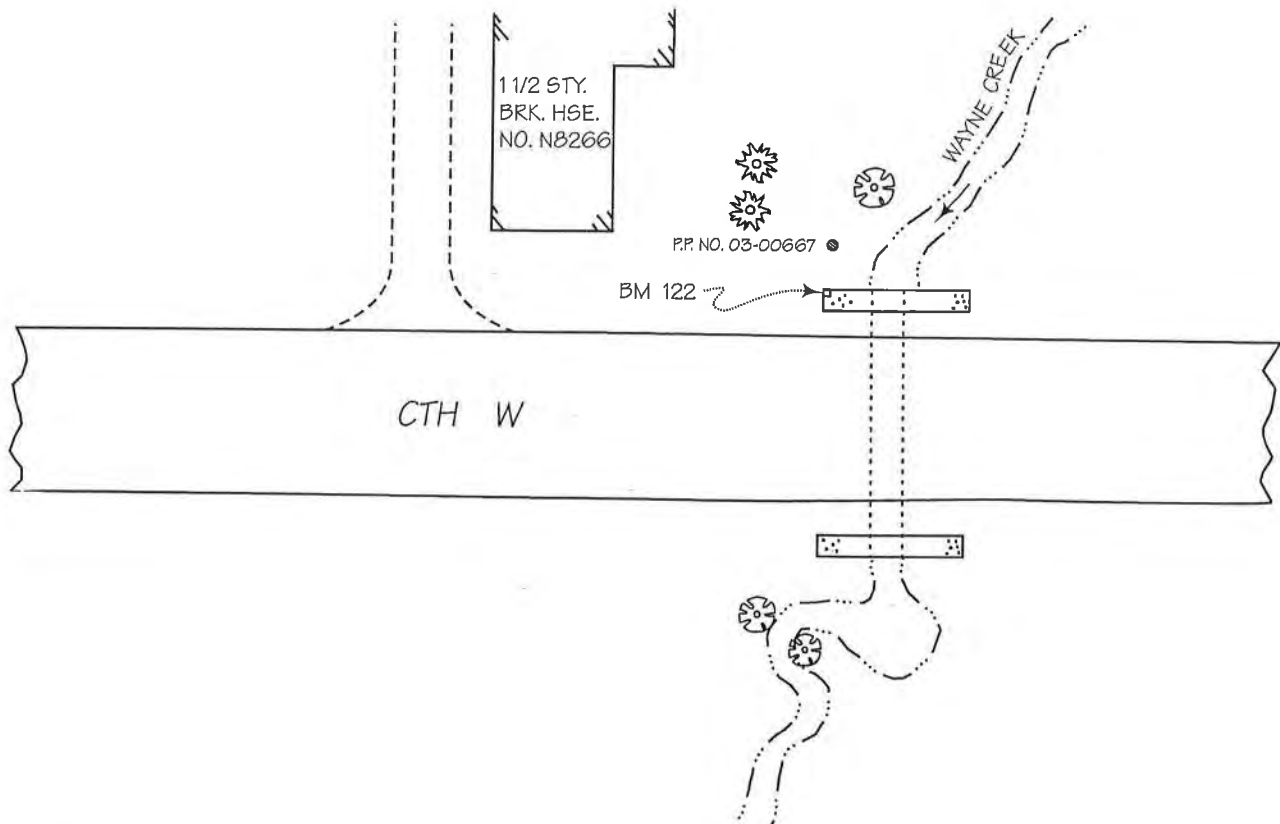
BM SET BY: AERO-METRIC, INC. YEAR: 2004

BM CONTROL SURVEY BY: AERO-METRIC, INC. YEAR: 2004

DATUM: NATIONAL GEODETIC VERTICAL DATUM OF 1929

CONTROL ACCURACY: SECOND ORDER, CLASS II

LOCATION SKETCH:



DETAILED DESCRIPTION:

Benchmark 122 is a chiseled square set in the top of the northeast corner of the concrete headwall of a 60" diameter corrugated metal culvert pipe.

RECOVERED BY: SEWRPC DATE: 7 MARCH 2005

RECORD OF VERTICAL CONTROL STATION

SECTION 30 T 12 N, R 18 E, WASHINGTON COUNTY, WISCONSIN

BENCH MARK NO.: URK-100;URK-105 ELEVATION: URK-100 947.181  
URK-105 952.816

REFERENCE BENCH MARK NO.: RRK-100-105 ELEVATION: 954.058

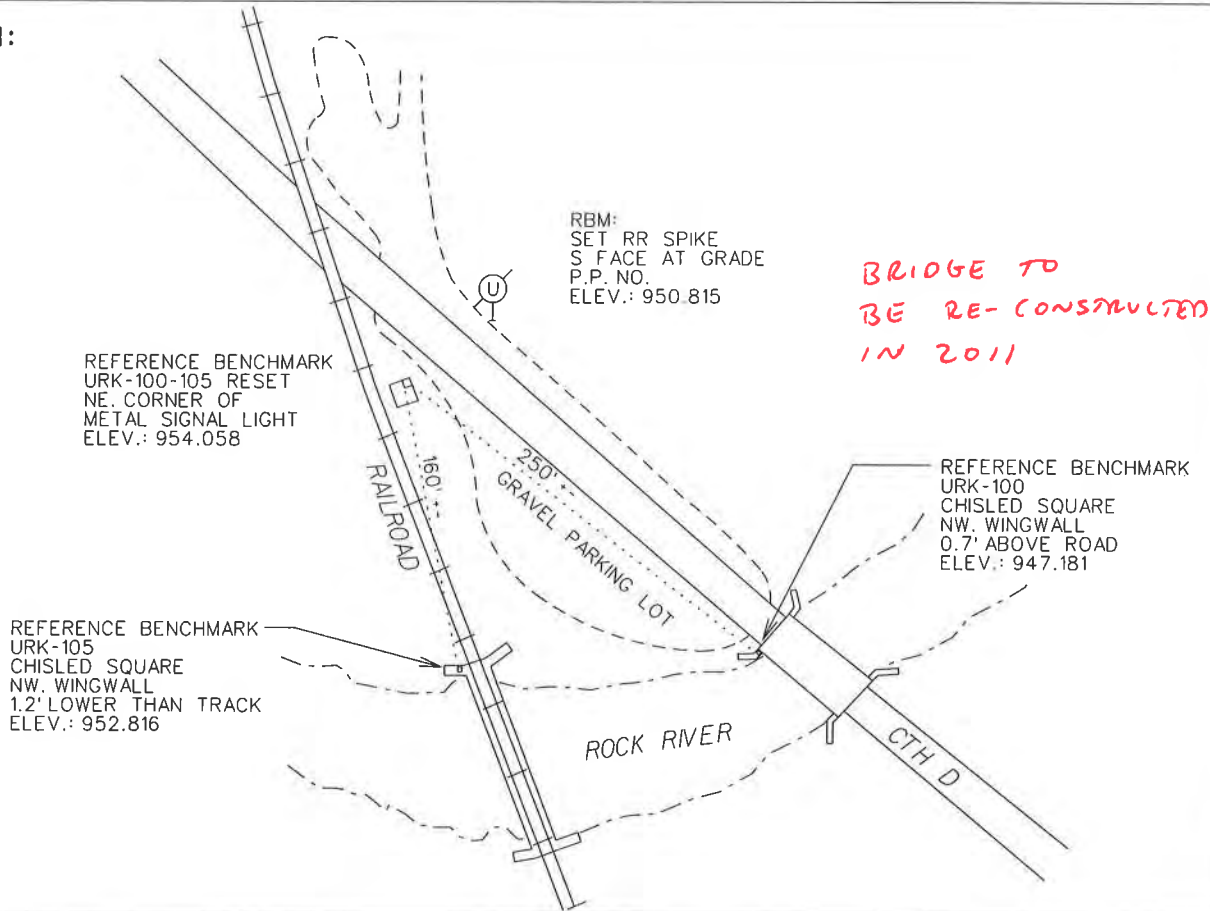
BM SET BY: WASHINGTON COUNTY

BM CONTROL SURVEY BY: ALSTER & ASSOCIATES, INC., ENGINEERS, MADISON WISCONSIN

DATUM: NATIONAL GEODETIC VERTICAL DATUM OF 1929

CONTROL ACCURACY: THIRD ORDER

LOCATION SKETCH:



DETAILED DESCRIPTION:

About 0.23 miles south and 200' west of the east one quarter corner of Section 30, T 12 N, R 18 E. About 0.8 miles west of USH 41.

RECOVERED BY: WASHINGTON COUNTY DATE: March 21, 2011

FORM PREPARED BY SOUTHEASTERN WISCONSIN REGIONAL PLANNING COMMISSION

**RECORD OF VERTICAL CONTROL STATION**

SECTION 36 T. 12 N. R. 18 E. WASHINGTON COUNTY, WISCONSIN

BENCH MARK NAME: KOHLVILLE GPS ELEVATION 1091.818

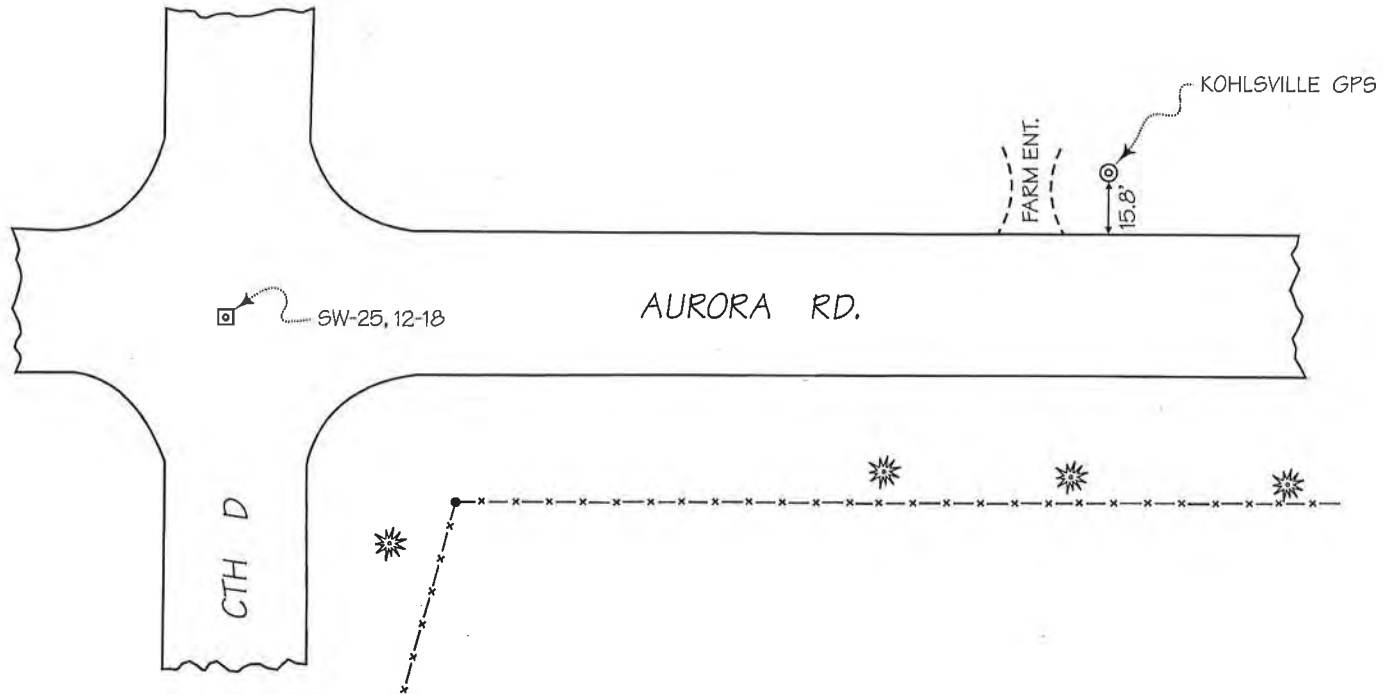
BM SET BY: WisDOT YEAR: 1999

BM CONTROL SURVEY BY: AERO-METRIC, INC. YEAR: 2004

DATUM: NATIONAL GEODETIC VERTICAL DATUM OF 1929

CONTROL ACCURACY: SECOND ORDER, CLASS II

LOCATION SKETCH:



DETAILED DESCRIPTION:

KOHLVILLE GPS is a concrete monument with Wisconsin Department of Transportation brass cap. The monument is 500'± south of CTH D.

RECOVERED BY: SEWRPC DATE: 7 MARCH 2005