



FARMINGTON



BENCHMARKS

This is a PDF of **all mapped Benchmarks 1997 forward** in T12E R20W ordered by section number.

For pre-1997 benchmarks, click to view [index map and scanned images of benchmark sheets.](#)

Please scroll to your desired benchmark.



For more information or to report problems, contact:
Scott M. Schmidt, PE, RLS
Washington County Engineer/Surveyor
Washington County Public Agency Center (PAC)
333 East Washington St, Suite 2300
P.O. Box 2003
West Bend, WI 53095-2003
Phone: 262-335-6881
Fax: 262-335-4171
Email: scott.schmidt@co.washington.wi.us

RECORD OF VERTICAL CONTROL STATION

SECTION 2 T. 12 N. R. 20 E. WASHINGTON COUNTY, WISCONSIN

BENCH MARK NO.: ML-J11 ELEVATION 802.941

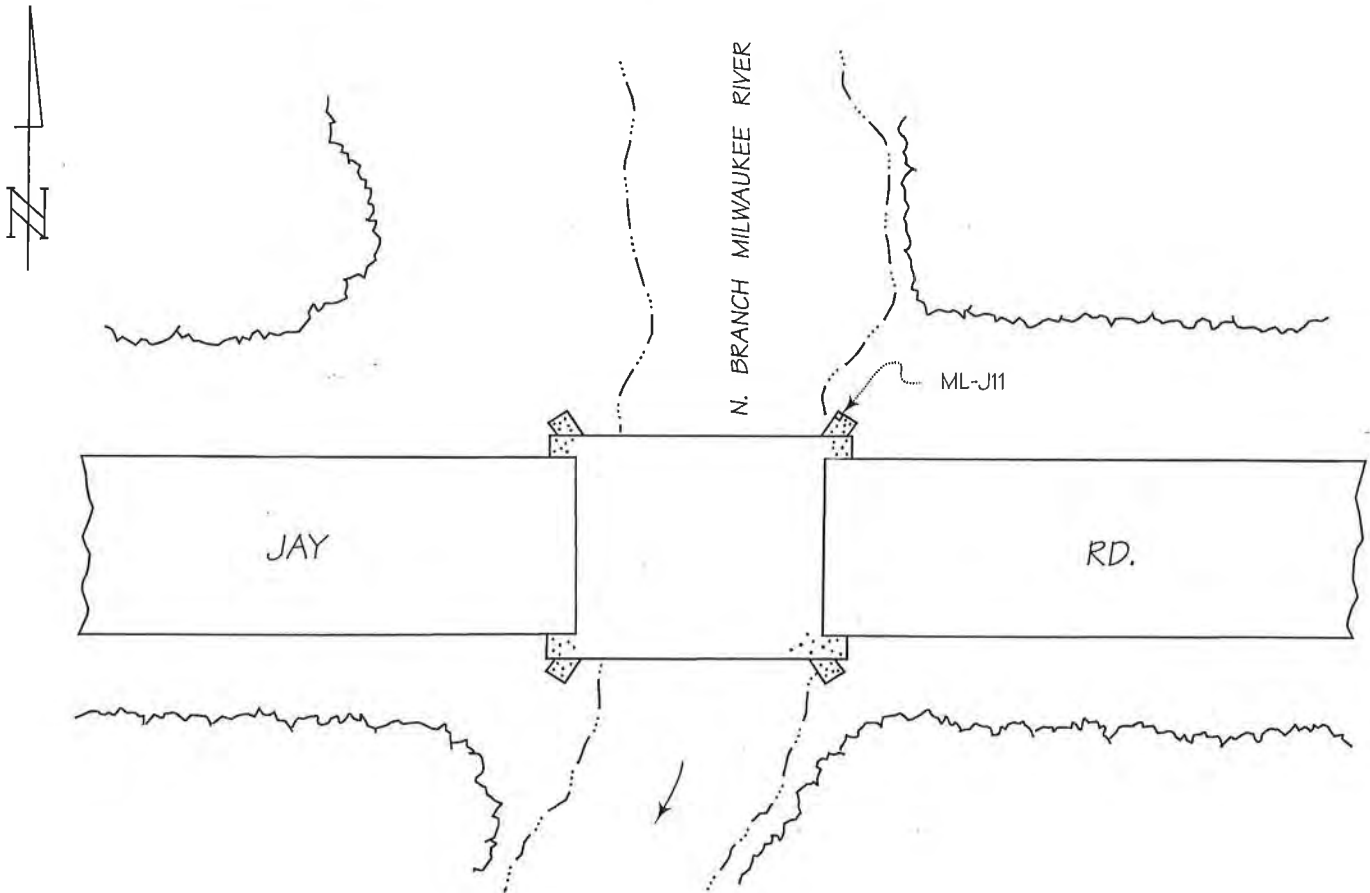
BM SET BY: ALSTER & ASSOC., INC. YEAR: 1968

BM CONTROL SURVEY BY: AERO-METRIC, INC. YEAR: 2004

DATUM: NATIONAL GEODETIC VERTICAL DATUM OF 1929

CONTROL ACCURACY: SECOND ORDER, CLASS II

LOCATION SKETCH:



DETAILED DESCRIPTION:

ML-J11 is a chiseled square in the top of the north corner of the northeast concrete wingwall for bridge No. 1909. The benchmark is 0.15 mile west of Fillmore Rd.

RECOVERED BY: SEWRPC DATE: 19 APRIL 2005

RECORD OF VERTICAL CONTROL STATION

SECTION 3 T. 12 N. R. 20 E. WASHINGTON COUNTY, WISCONSIN

BENCH MARK NO.: 197 ELEVATION 829.984

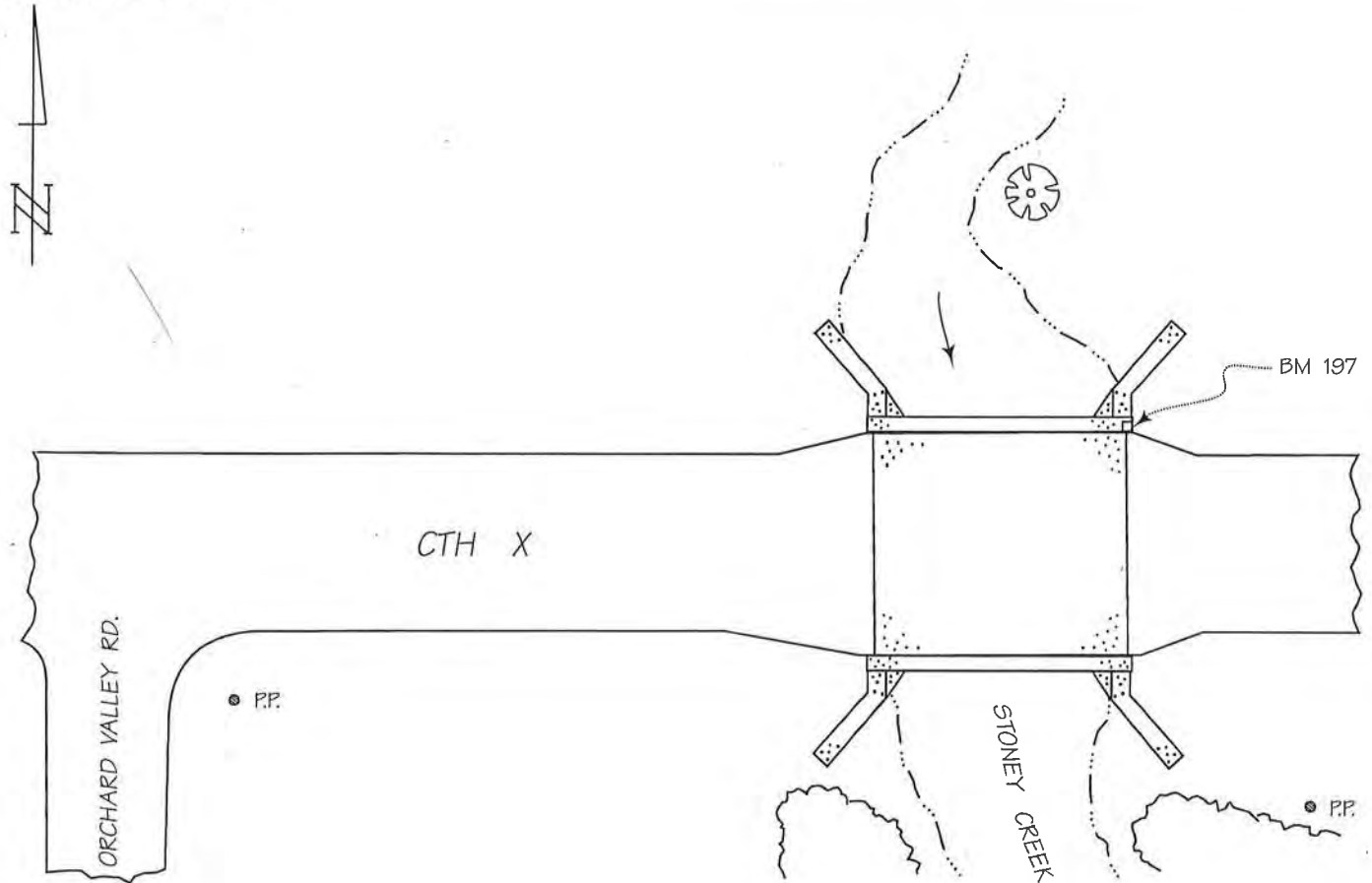
BM SET BY: AERO-METRIC, INC. YEAR: 2004

BM CONTROL SURVEY BY: AERO-METRIC, INC. YEAR: 2004

DATUM: NATIONAL GEODETIC VERTICAL DATUM OF 1929

CONTROL ACCURACY: SECOND ORDER, CLASS II

LOCATION SKETCH:



DETAILED DESCRIPTION:

Benchmark 197 is a chiseled square in the top of the southeast corner of the concrete headwall for bridge.

RECOVERED BY: SEWRPC DATE: 19 APRIL 2005

RECORD OF VERTICAL CONTROL STATION

SECTION 3 T. 12 N. R. 20 E. WASHINGTON COUNTY, WISCONSIN

BENCH MARK NO.: 198 ELEVATION 850.431

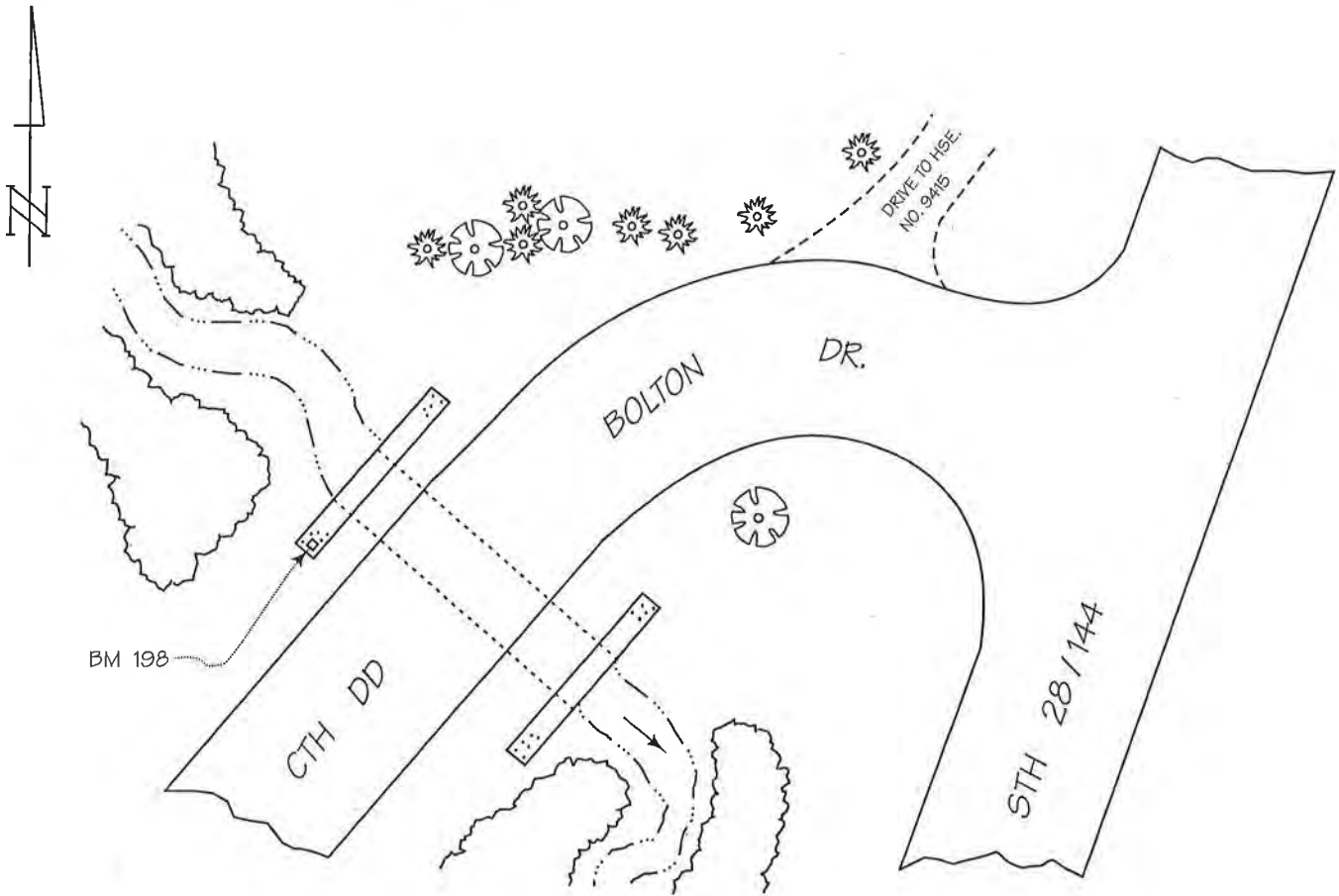
BM SET BY: AERO-METRIC, INC. YEAR: 2004

BM CONTROL SURVEY BY: AERO-METRIC, INC. YEAR: 2004

DATUM: NATIONAL GEODETIC VERTICAL DATUM OF 1929

CONTROL ACCURACY: SECOND ORDER, CLASS II

LOCATION SKETCH:



DETAILED DESCRIPTION:

Benchmark 198 is a chiseled square in the top of the southwest end of concrete headwall for 60" diameter corrugated metal pipe.

RECOVERED BY: SEWRPC DATE: 19 APRIL 2005

RECORD OF VERTICAL CONTROL STATION

SECTION 5 T. 12 N. R. 20 E. WASHINGTON COUNTY, WISCONSIN

BENCH MARK NO.: 3K27 ELEVATION 1033.724

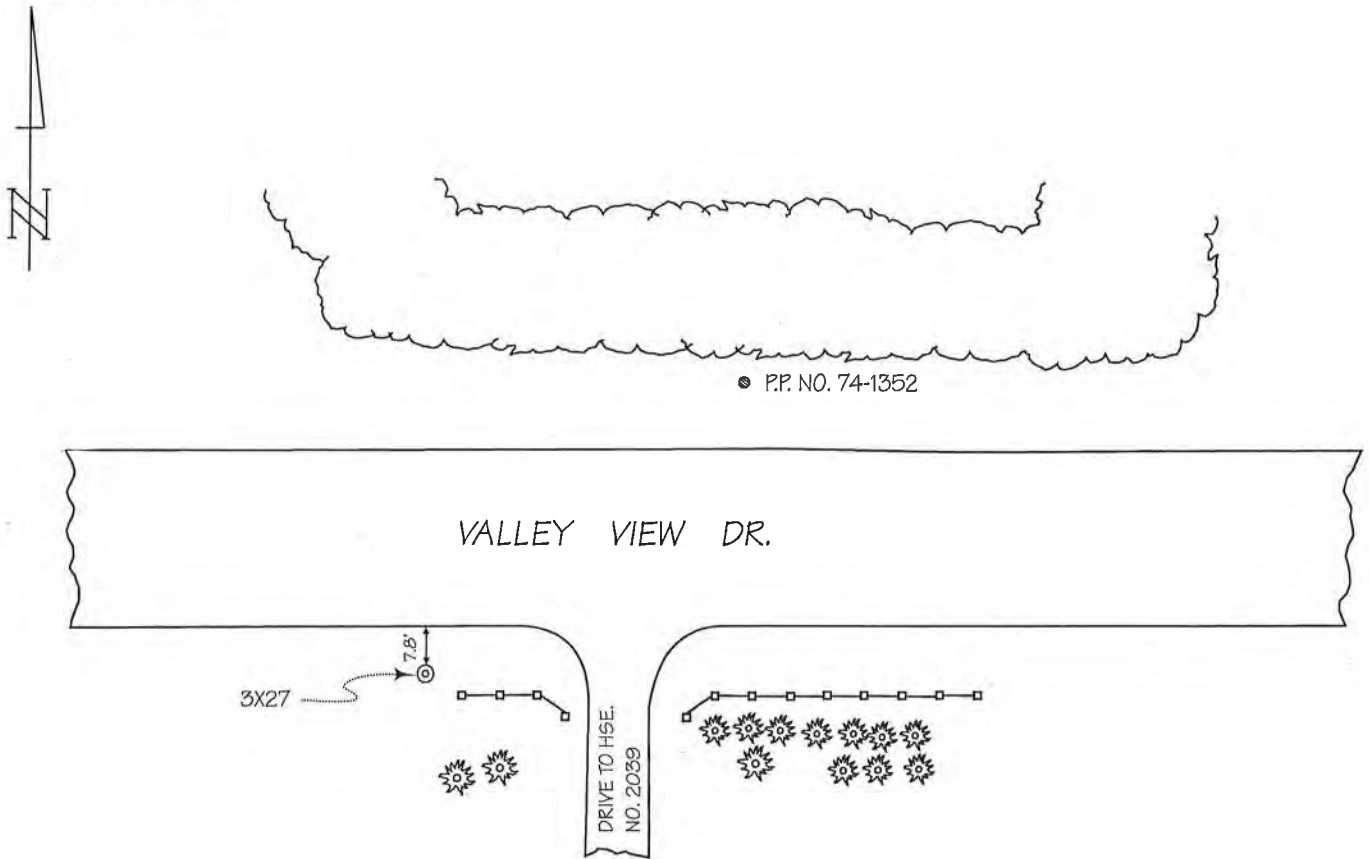
BM SET BY: WisDOT YEAR: 2000

BM CONTROL SURVEY BY: AERO-METRIC, INC. YEAR: 2004

DATUM: NATIONAL GEODETIC VERTICAL DATUM OF 1929

CONTROL ACCURACY: SECOND ORDER, CLASS II

LOCATION SKETCH:



DETAILED DESCRIPTION:

3K27 is a concrete monument with Wisconsin Department of Transportation brass cap.

RECOVERED BY: SEWRPC DATE: 19 APRIL 2005

RECORD OF VERTICAL CONTROL STATION

SECTION 6 T. 12 N. R. 20 E. WASHINGTON COUNTY, WISCONSIN

BENCH MARK NAME: NEW FANE GPS ELEVATION 1067.093

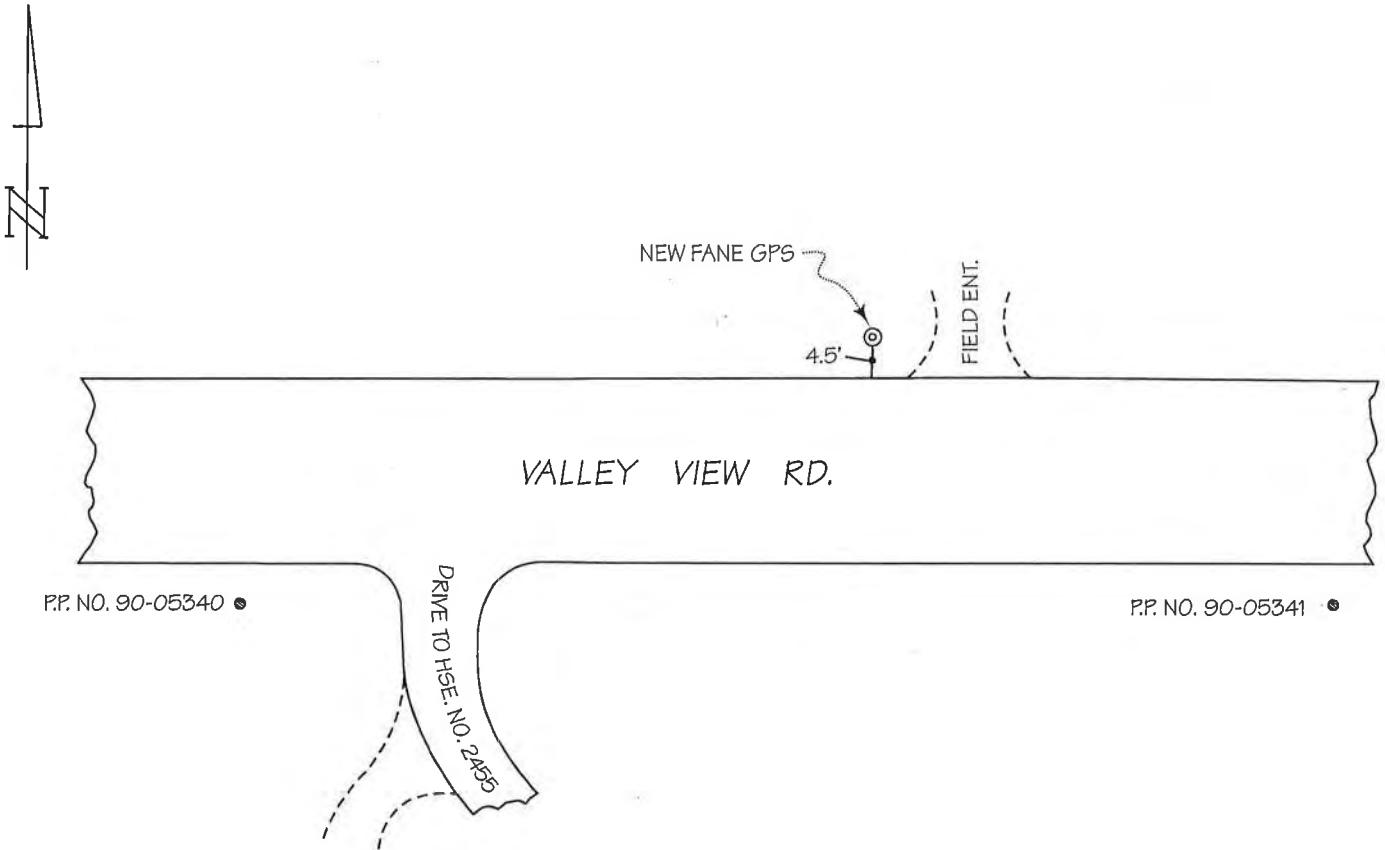
BM SET BY: FOND DU LAC CO. YEAR: 1993

BM CONTROL SURVEY BY: AERO-METRIC, INC. YEAR: 2004

DATUM: NATIONAL GEODETIC VERTICAL DATUM OF 1929

CONTROL ACCURACY: SECOND ORDER, CLASS II

LOCATION SKETCH:



DETAILED DESCRIPTION:

NEW FANE GPS is a concrete monument with Fond Du Lac County brass cap.

RECOVERED BY: SEWRPC DATE: 19 APRIL 2005

RECORD OF VERTICAL CONTROL STATION

SECTION 8 T. 12 N. R. 20 E. WASHINGTON COUNTY, WISCONSIN

BENCH MARK NO.: 192 ELEVATION 920.986

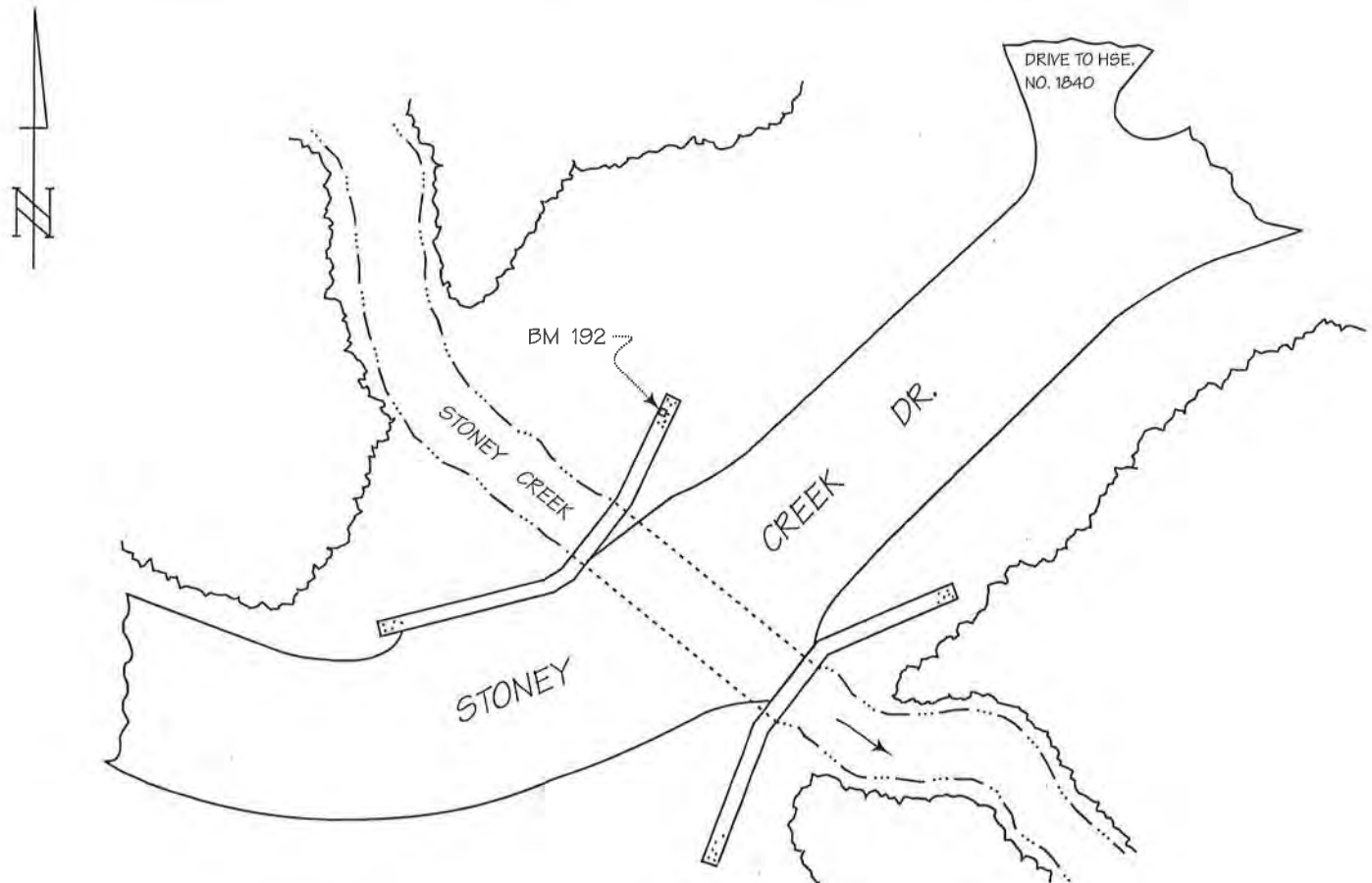
BM SET BY: AERO-METRIC, INC. YEAR: 2004

BM CONTROL SURVEY BY: AERO-METRIC, INC. YEAR: 2004

DATUM: NATIONAL GEODETIC VERTICAL DATUM OF 1929

CONTROL ACCURACY: SECOND ORDER, CLASS II

LOCATION SKETCH:



DETAILED DESCRIPTION:

192 is a chiseled square in the top of the northeast end of the northeast concrete wingwall of the concrete headwall for a 9' diameter corrugated metal culvert pipe.

RECOVERED BY: SEWRPC DATE: 25 MAY 2005

RECORD OF VERTICAL CONTROL STATION

SECTION 9 T. 12 N. R. 20 E. WASHINGTON COUNTY, WISCONSIN

BENCH MARK NO.: 190 ELEVATION 866.430

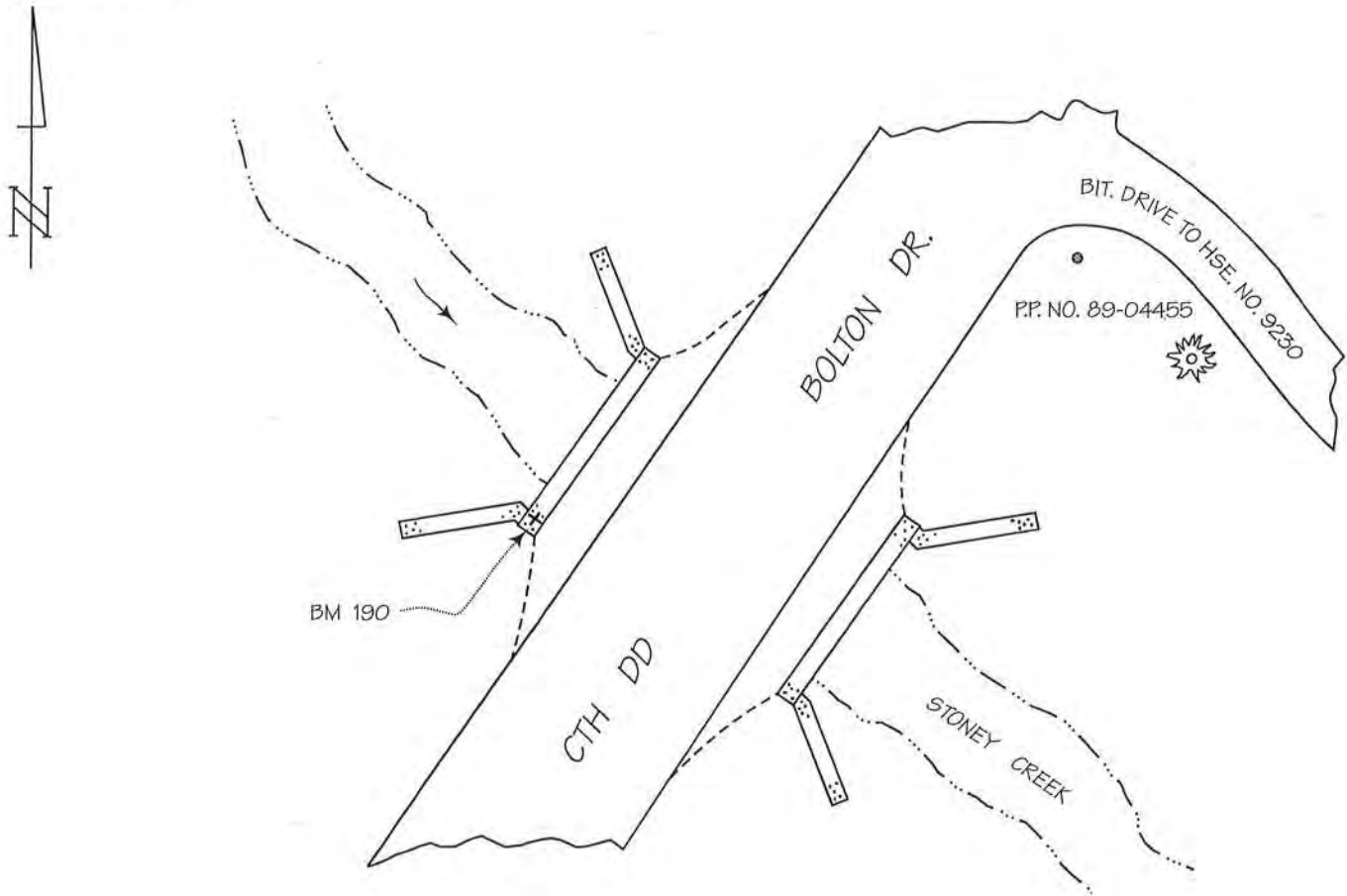
BM SET BY: AERO-METRIC, INC. YEAR: 2004

BM CONTROL SURVEY BY: AERO-METRIC, INC. YEAR: 2004

DATUM: NATIONAL GEODETIC VERTICAL DATUM OF 1929

CONTROL ACCURACY: SECOND ORDER, CLASS II

LOCATION SKETCH:



DETAILED DESCRIPTION:

Benchmark 190 is a chiseled cross in the top of the southwest end of the concrete headwall for bridge..

RECOVERED BY: SEWRPC DATE: 19 APRIL 2005

RECORD OF VERTICAL CONTROL STATION

SECTION 10 T. 12 N. R. 20 E. WASHINGTON COUNTY, WISCONSIN

BENCH MARK NAME: FARMINGTON N GPS ELEVATION 921.851

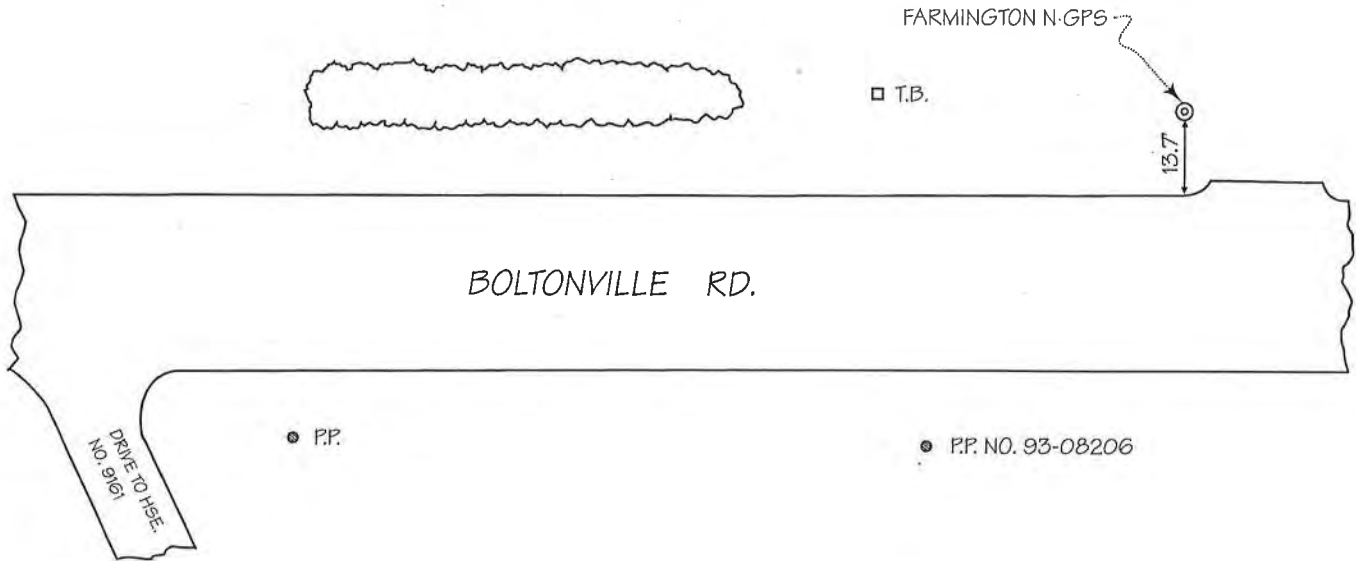
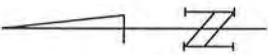
BM SET BY: WisDOT YEAR: 2000

BM CONTROL SURVEY BY: AERO-METRIC, INC. YEAR: 2004

DATUM: NATIONAL GEODETIC VERTICAL DATUM OF 1929

CONTROL ACCURACY: SECOND ORDER, CLASS II

LOCATION SKETCH:



DETAILED DESCRIPTION:

FARMINGTON N GPS is a concrete monument with Wisconsin Department of Transportation brass cap. The monument is 375'± south of the drive to house No. 9161.

RECOVERED BY: SEWRPC DATE: 25 MAY 2005

RECORD OF VERTICAL CONTROL STATION

SECTION 10 T. 12 N. R. 20 E. WASHINGTON COUNTY, WISCONSIN

BENCH MARK NO.: 189 ELEVATION 826.812

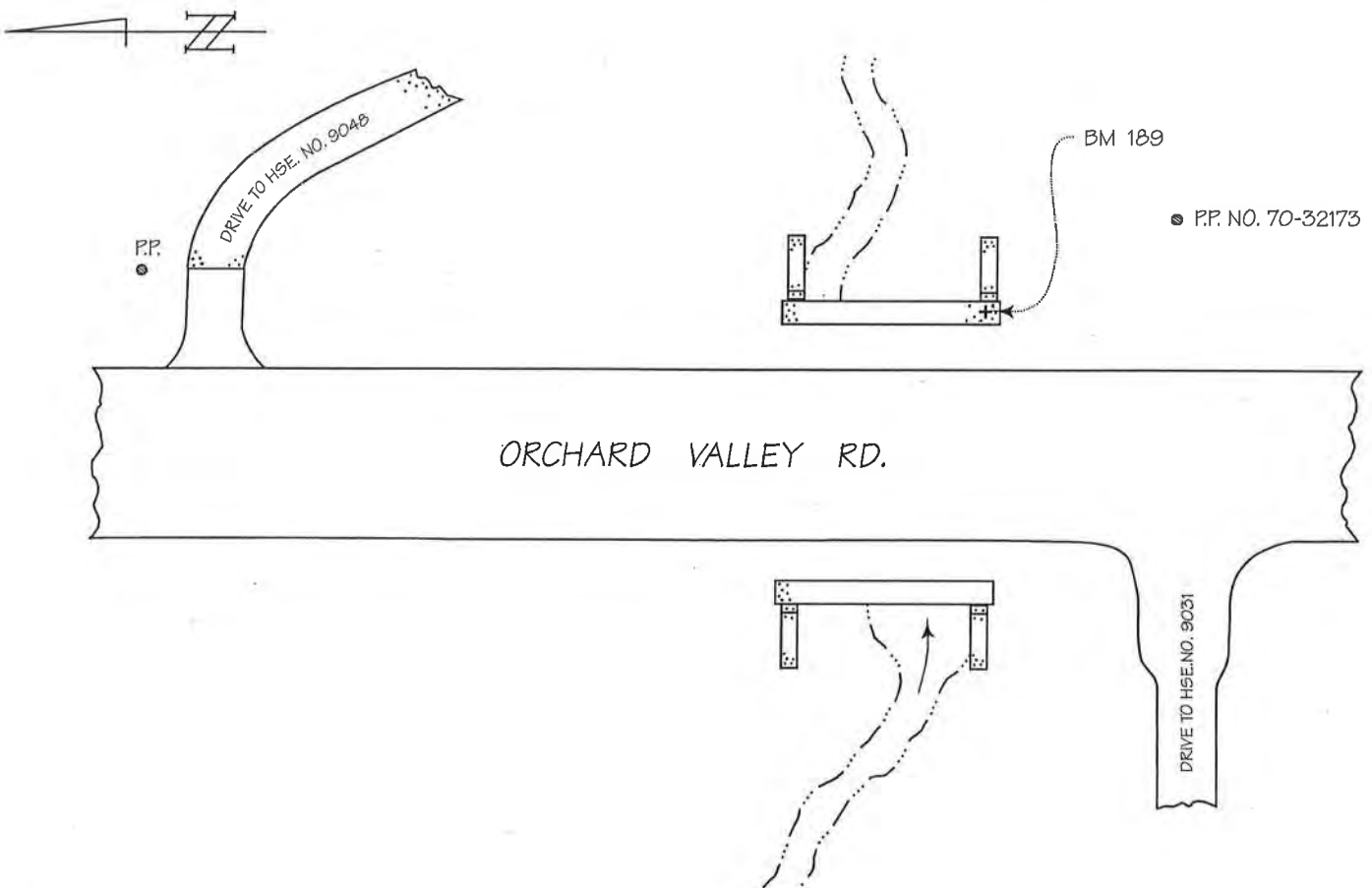
BM SET BY: AERO-METRIC, INC. YEAR: 2004

BM CONTROL SURVEY BY: AERO-METRIC, INC. YEAR: 2004

DATUM: NATIONAL GEODETIC VERTICAL DATUM OF 1929

CONTROL ACCURACY: SECOND ORDER, CLASS II

LOCATION SKETCH:



DETAILED DESCRIPTION:

Benchmark 189 is a chiseled cross set in the top of the south end of the concrete endwall for bridge.

RECOVERED BY: SEWRPC DATE: 25 MAY 2005

RECORD OF VERTICAL CONTROL STATION

SECTION 10 T. 12 N. R. 20 E. WASHINGTON COUNTY, WISCONSIN

BENCH MARK NO.: 199 ELEVATION 847.759

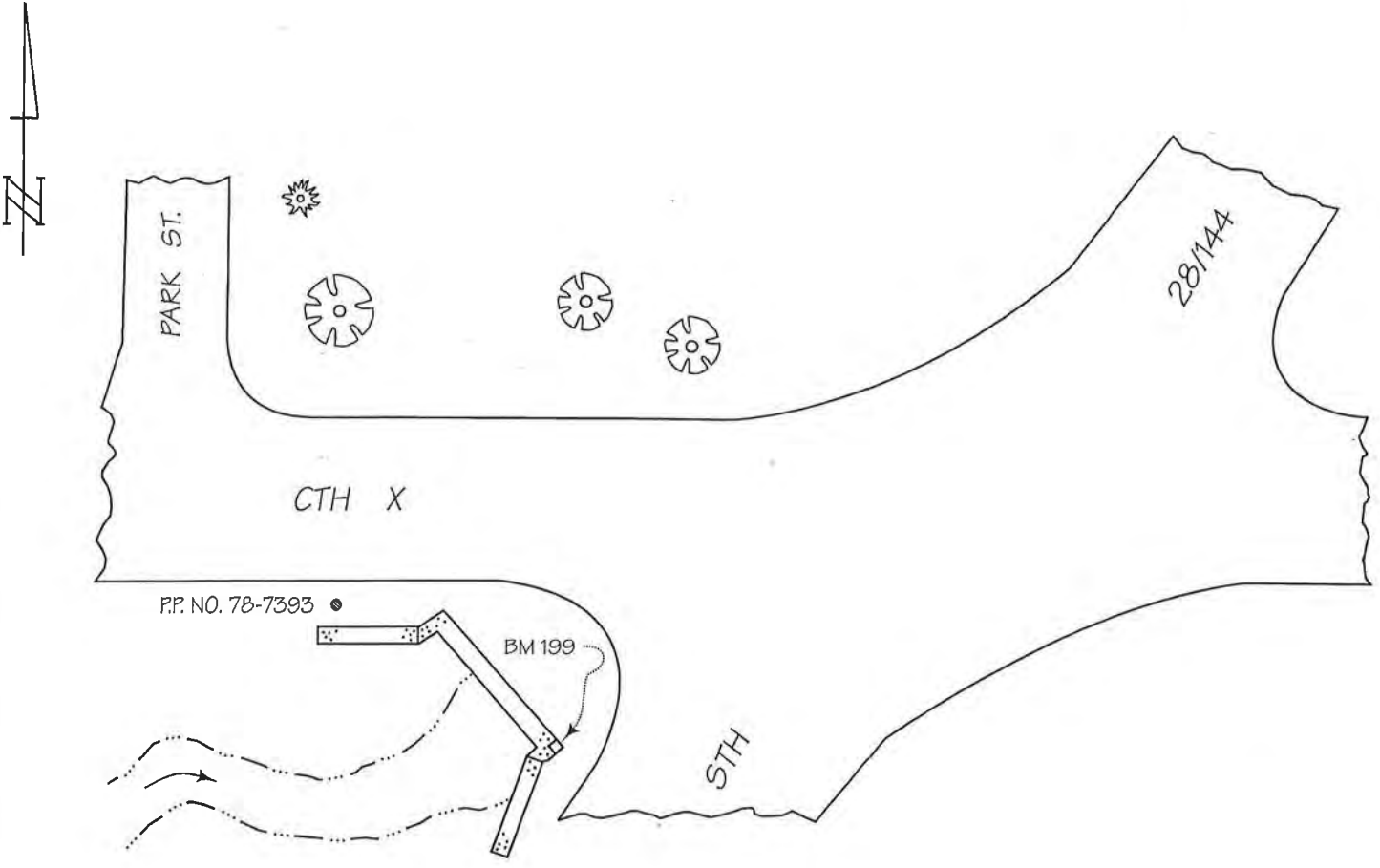
BM SET BY: AERO-METRIC, INC. YEAR: 2004

BM CONTROL SURVEY BY: AERO-METRIC, INC. YEAR: 2004

DATUM: NATIONAL GEODETIC VERTICAL DATUM OF 1929

CONTROL ACCURACY: SECOND ORDER, CLASS II

LOCATION SKETCH:



DETAILED DESCRIPTION:

Benchmark 199 is a chiseled square in the top of the east corner of the southeast end of the concrete headwall for twin box culvert.

RECOVERED BY: SEWRPC DATE: 19 APRIL 2005

RECORD OF VERTICAL CONTROL STATION

SECTION 13 T. 12 N. R. 20 E. WASHINGTON COUNTY, WISCONSIN

BENCH MARK NO.: 196 ELEVATION 832.310

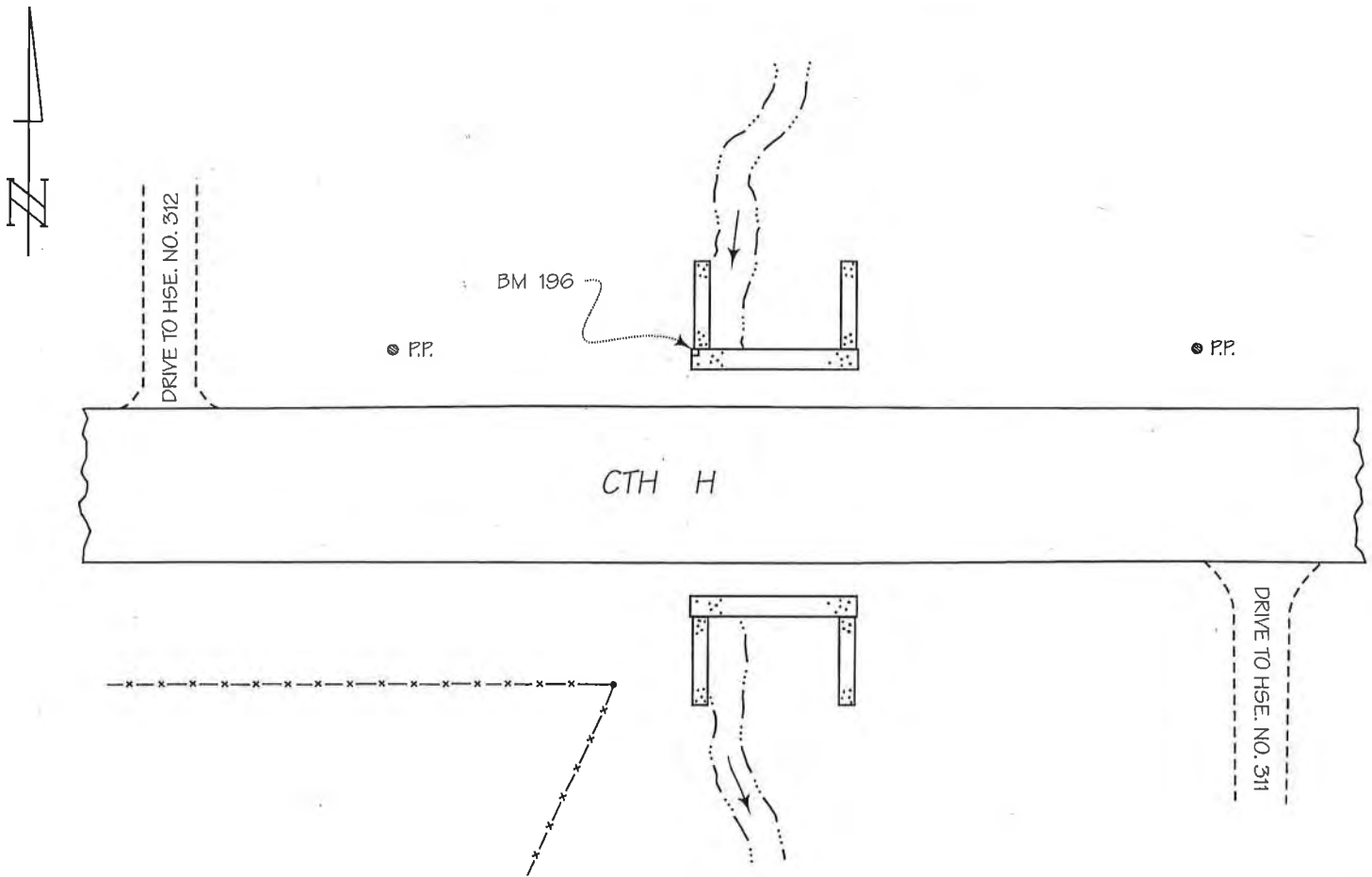
BM SET BY: AERO-METRIC, INC. YEAR: 2004

BM CONTROL SURVEY BY: AERO-METRIC, INC. YEAR: 2004

DATUM: NATIONAL GEODETIC VERTICAL DATUM OF 1929

CONTROL ACCURACY: SECOND ORDER, CLASS II

LOCATION SKETCH:



DETAILED DESCRIPTION:

Benchmark 196 is a chiseled square set in the top of the northwest corner of the concrete headwall for box culvert.

RECOVERED BY: SEWRPC DATE: 26 MAY 2005

RECORD OF VERTICAL CONTROL STATION

SECTION 15 T. 12 N. R. 20 E. WASHINGTON COUNTY, WISCONSIN

BENCH MARK NO.: ML-J37 ELEVATION 805.827

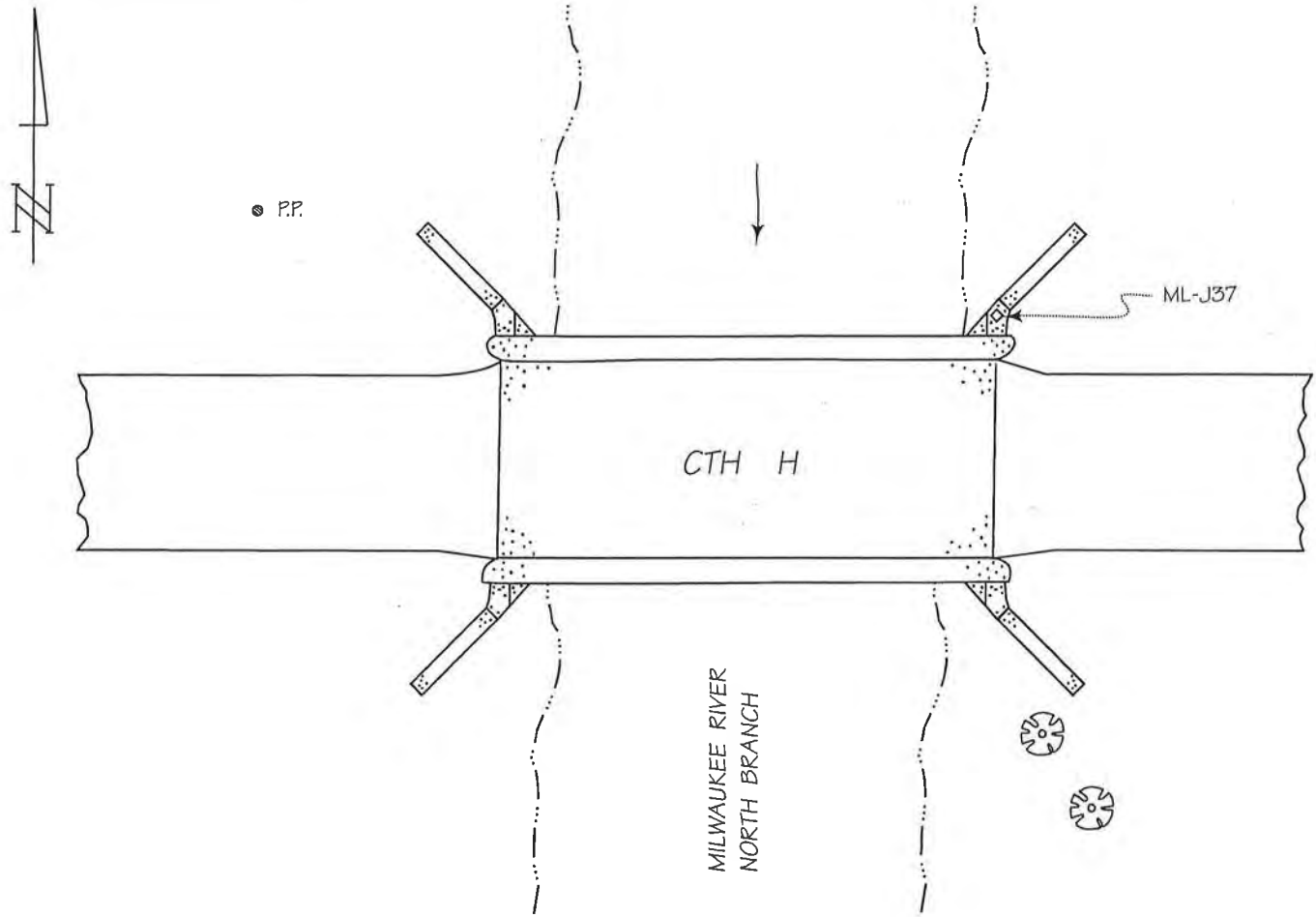
BM SET BY: ALSTER & ASSOC., INC. YEAR: 1968

BM CONTROL SURVEY BY: AERO-METRIC, INC. YEAR: 2004

DATUM: NATIONAL GEODETIC VERTICAL DATUM OF 1929

CONTROL ACCURACY: SECOND ORDER, CLASS II

LOCATION SKETCH:



DETAILED DESCRIPTION:

ML-J37 is a chiseled square set in the top of the northeast concrete wingwall for bridge No. B-66-654-50. The benchmark is 650'± east of drive to house No. 970.

RECOVERED BY: SEWRPC DATE: 26 MAY 2005

RECORD OF VERTICAL CONTROL STATION

SECTION 17 T. 12 N. 20 E. WASHINGTON COUNTY, WISCONSIN

BENCH MARK NAME: BOLTONVILLE ELEVATION 1062.214

REFERENCE BENCH MARK NO.: RM-1 ELEVATION 1060.590

REFERENCE BENCH MARK NO.: RM-2 ELEVATION 1061.592

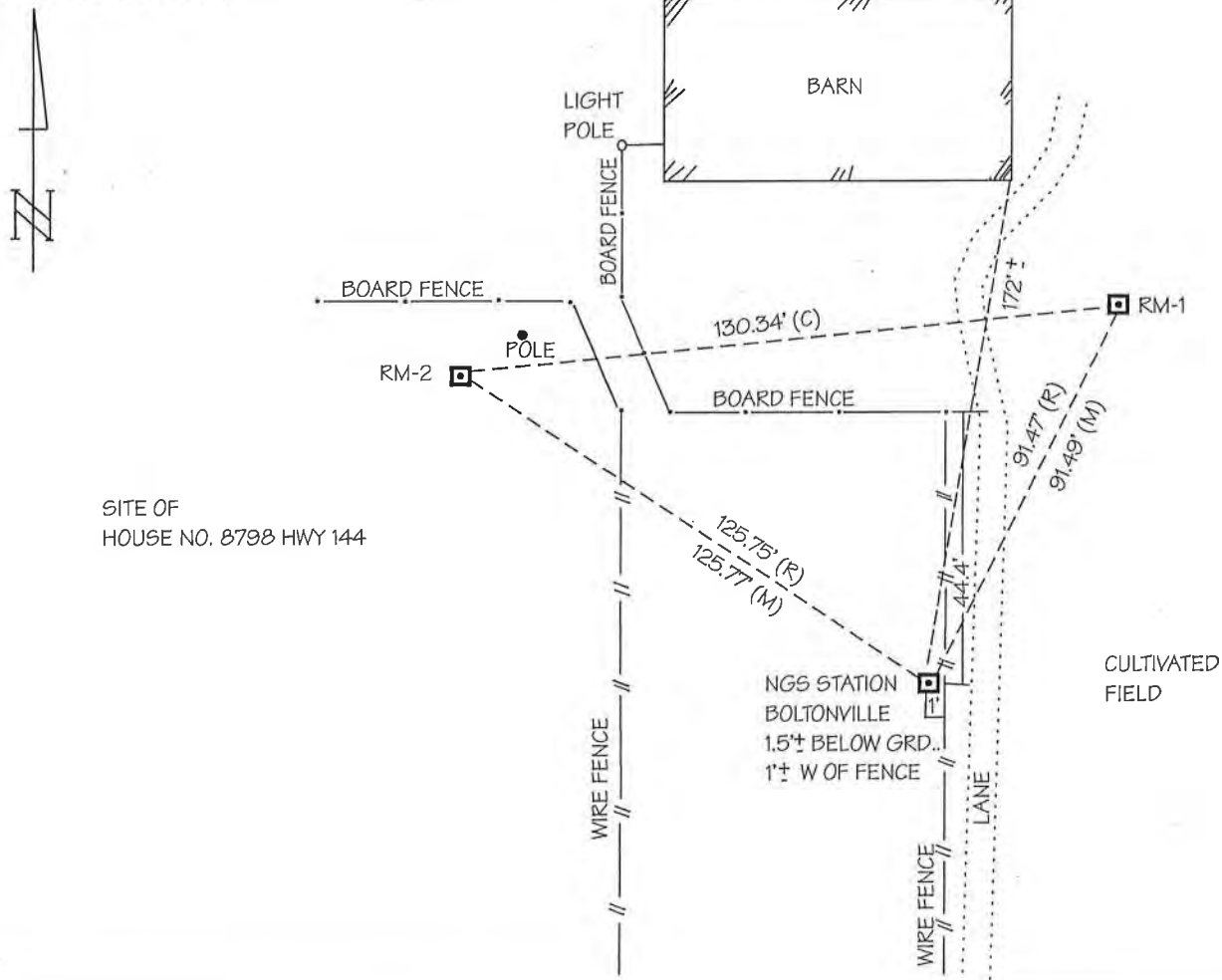
BM /RBM SET BY: U.S. COAST & GEODETIC SURVEY YEAR: 1953

BM/RBM CONTROL SURVEY BY: AERO-METRIC, INC. YEAR: 2005

DATUM: NATIONAL GEODETIC VERTICAL DATUM OF 1929

CONTROL ACCURACY: SECOND ORDER, CLASS II

LOCATION SKETCH:



DETAILED DESCRIPTION:

BOLTONVILLE is located approximately 0.3 mile SW of the intersection of STH 28 and STH 144.

RECOVERED BY: AERO-METRIC, INC. YEAR: 2005

RECORD OF VERTICAL CONTROL STATION

SECTION 17 T. 12 N. R. 20 E. WASHINGTON COUNTY, WISCONSIN

BENCH MARK NO.: 191 ELEVATION 921.180

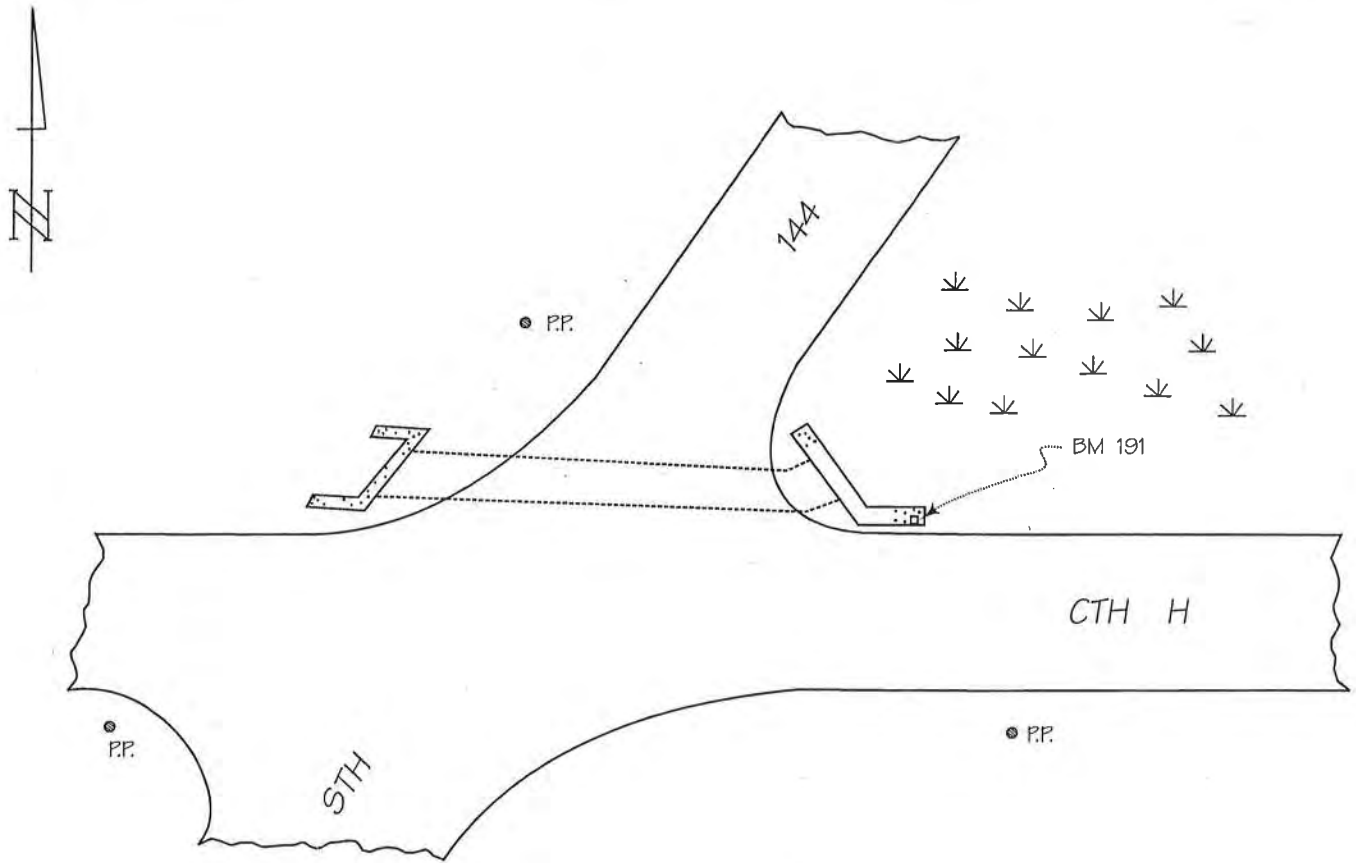
BM SET BY: AERO-METRIC, INC. YEAR: 2004

BM CONTROL SURVEY BY: AERO-METRIC, INC. YEAR: 2004

DATUM: NATIONAL GEODETIC VERTICAL DATUM OF 1929

CONTROL ACCURACY: SECOND ORDER, CLASS II

LOCATION SKETCH:



DETAILED DESCRIPTION:

Benchmark 191 is a chiseled square in the top of the east end of the concrete wingwall for box culvert No. C-1598-41.

RECOVERED BY: SEWRPC DATE: 25 MAY 2005

RECORD OF VERTICAL CONTROL STATION

SECTION 19 T. 12 N. R. 20 E. WASHINGTON COUNTY, WISCONSIN

BENCH MARK NAME: FARMINGTON W GPS ELEVATION 934.046

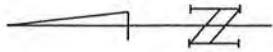
BM SET BY: WisDOT YEAR: 1999

BM CONTROL SURVEY BY: AERO-METRIC, INC. YEAR: 2004

DATUM: NATIONAL GEODETIC VERTICAL DATUM OF 1929

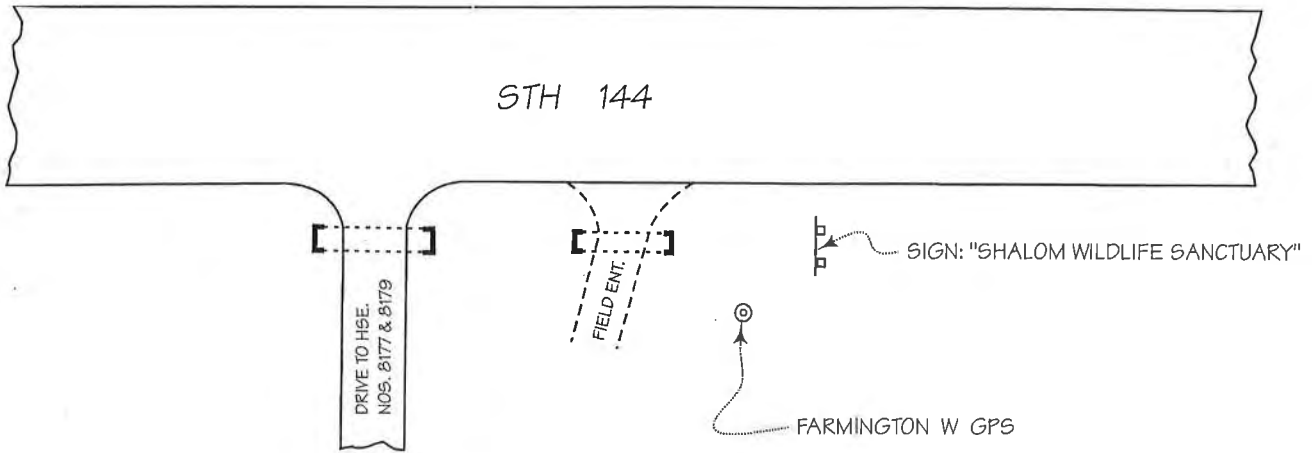
CONTROL ACCURACY: SECOND ORDER, CLASS II

LOCATION SKETCH:



P.P. NO. 00-07649

P.P.



DETAILED DESCRIPTION:

FARMINGTON W GPS is a concrete monument with Wisconsin Department of Transportation brass cap. The monument is 500'± north of Shalom Dr.

RECOVERED BY: SEWRPC DATE: 25 MAY 2005

RECORD OF VERTICAL CONTROL STATION

SECTION 22 T. 12 N. R. 20 E. WASHINGTON COUNTY, WISCONSIN

BENCH MARK NO.: 212 ELEVATION 818.148

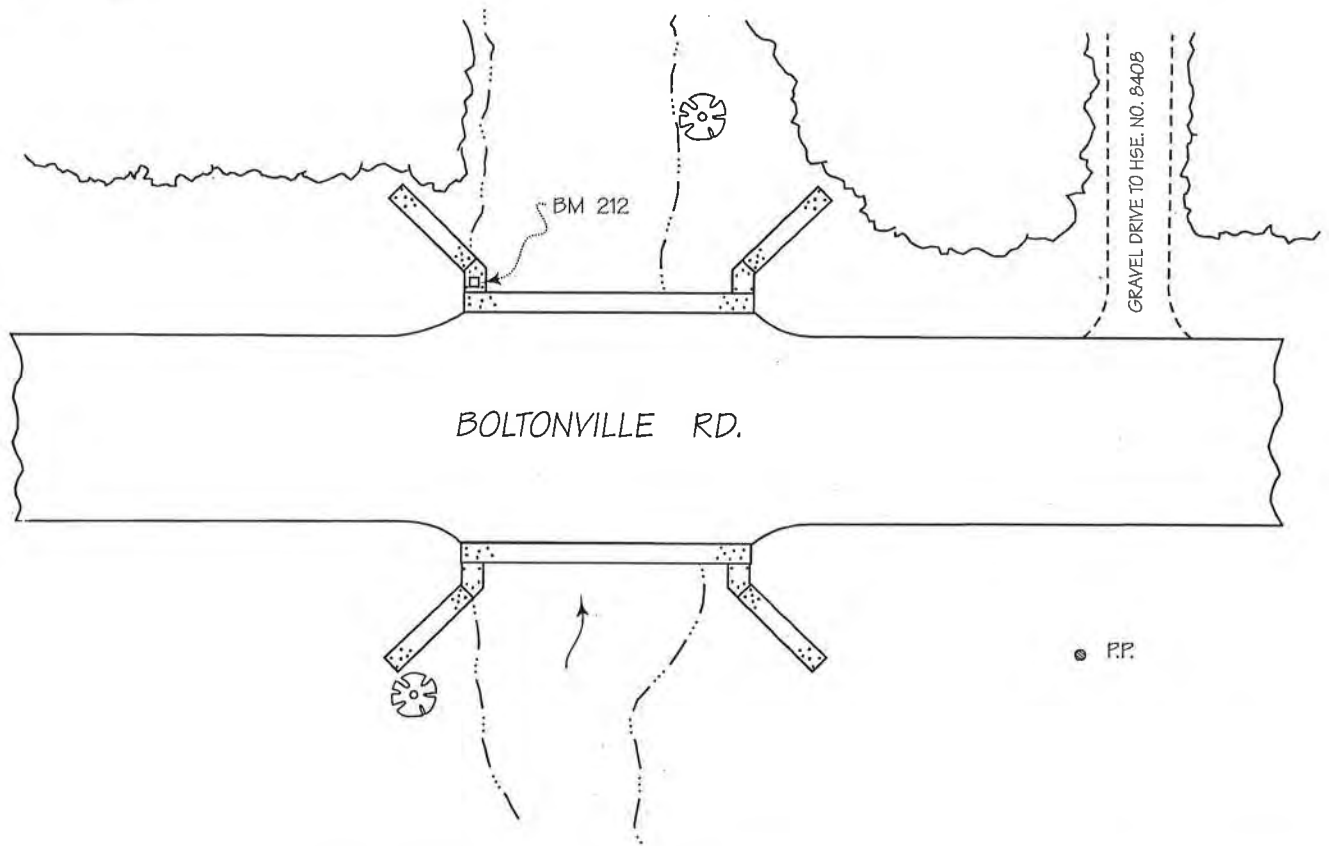
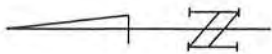
BM SET BY: AERO-METRIC, INC. YEAR: 2004

BM CONTROL SURVEY BY: AERO-METRIC, INC. YEAR: 2004

DATUM: NATIONAL GEODETIC VERTICAL DATUM OF 1929

CONTROL ACCURACY: SECOND ORDER, CLASS II

LOCATION SKETCH:



DETAILED DESCRIPTION:

Benchmark 212 is a chiseled square set in the top of the northeast concrete wingwall of a bridge.

RECOVERED BY: SEWRPC DATE: 25 MAY 2005

RECORD OF VERTICAL CONTROL STATION

SECTION 22 T. 12 N. R. 20 E. WASHINGTON COUNTY, WISCONSIN

BENCH MARK NO.: 213 ELEVATION 810.693

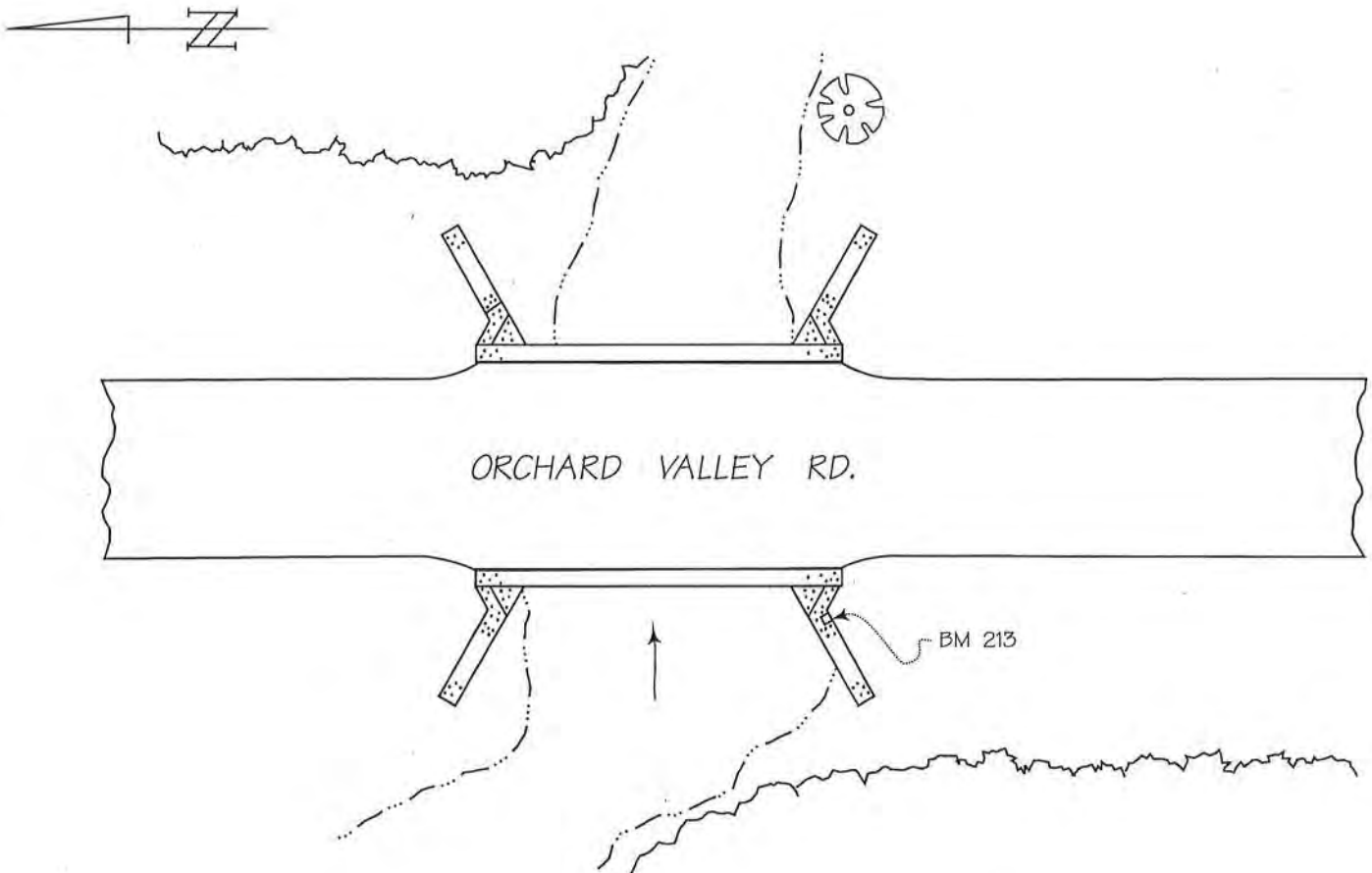
BM SET BY: AERO-METRIC, INC. YEAR: 2004

BM CONTROL SURVEY BY: AERO-METRIC, INC. YEAR: 2004

DATUM: NATIONAL GEODETIC VERTICAL DATUM OF 1929

CONTROL ACCURACY: SECOND ORDER, CLASS II

LOCATION SKETCH:



DETAILED DESCRIPTION:

Benchmark 213 is a chiseled square set in the top of the southwest concrete wingwall for a bridge. The benchmark is 0.2 mile south of CTH H and 400'± north of drive to house No. 8396.

RECOVERED BY: SEWRPC DATE: 26 MAY 2005

RECORD OF VERTICAL CONTROL STATION

SECTION 25 T. 12 N. R. 20 E. WASHINGTON COUNTY, WISCONSIN

BENCH MARK NO.: ML-F20 ELEVATION 805.427

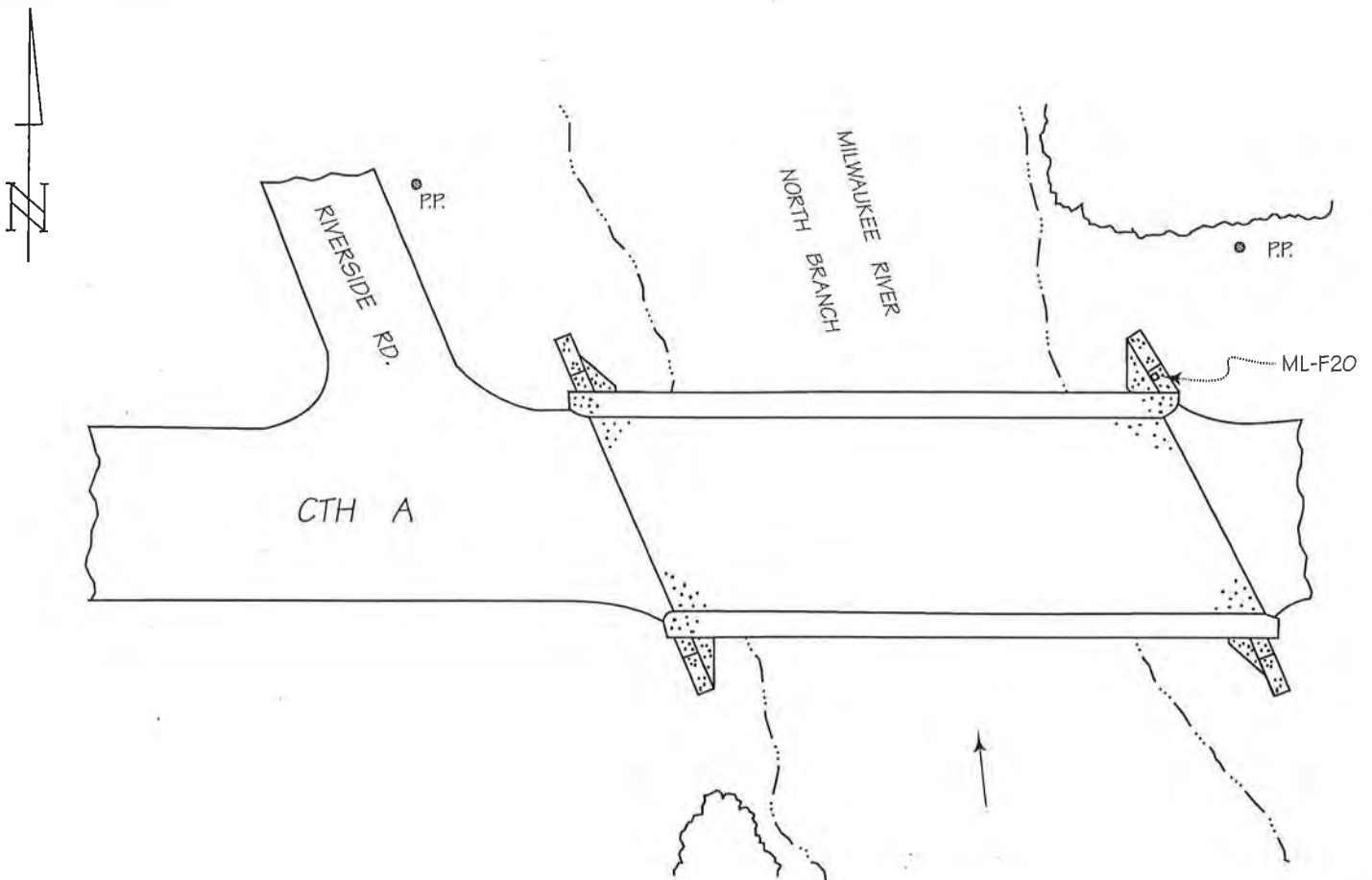
BM SET BY: ALSTER & ASSOC., INC. YEAR: 1968

BM CONTROL SURVEY BY: AERO-METRIC, INC. YEAR: 2004

DATUM: NATIONAL GEODETIC VERTICAL DATUM OF 1929

CONTROL ACCURACY: SECOND ORDER, CLASS II

LOCATION SKETCH:



DETAILED DESCRIPTION:

ML-F20 is a chiseled square in the top of the northeast concrete wingwall of a bridge.

RECOVERED BY: SEWRPC DATE: 26 MAY 2005

RECORD OF VERTICAL CONTROL STATION

SECTION 25 T. 12 N. R. 20 E. WASHINGTON COUNTY, WISCONSIN

BENCH MARK NO.: 202 ELEVATION 800.551

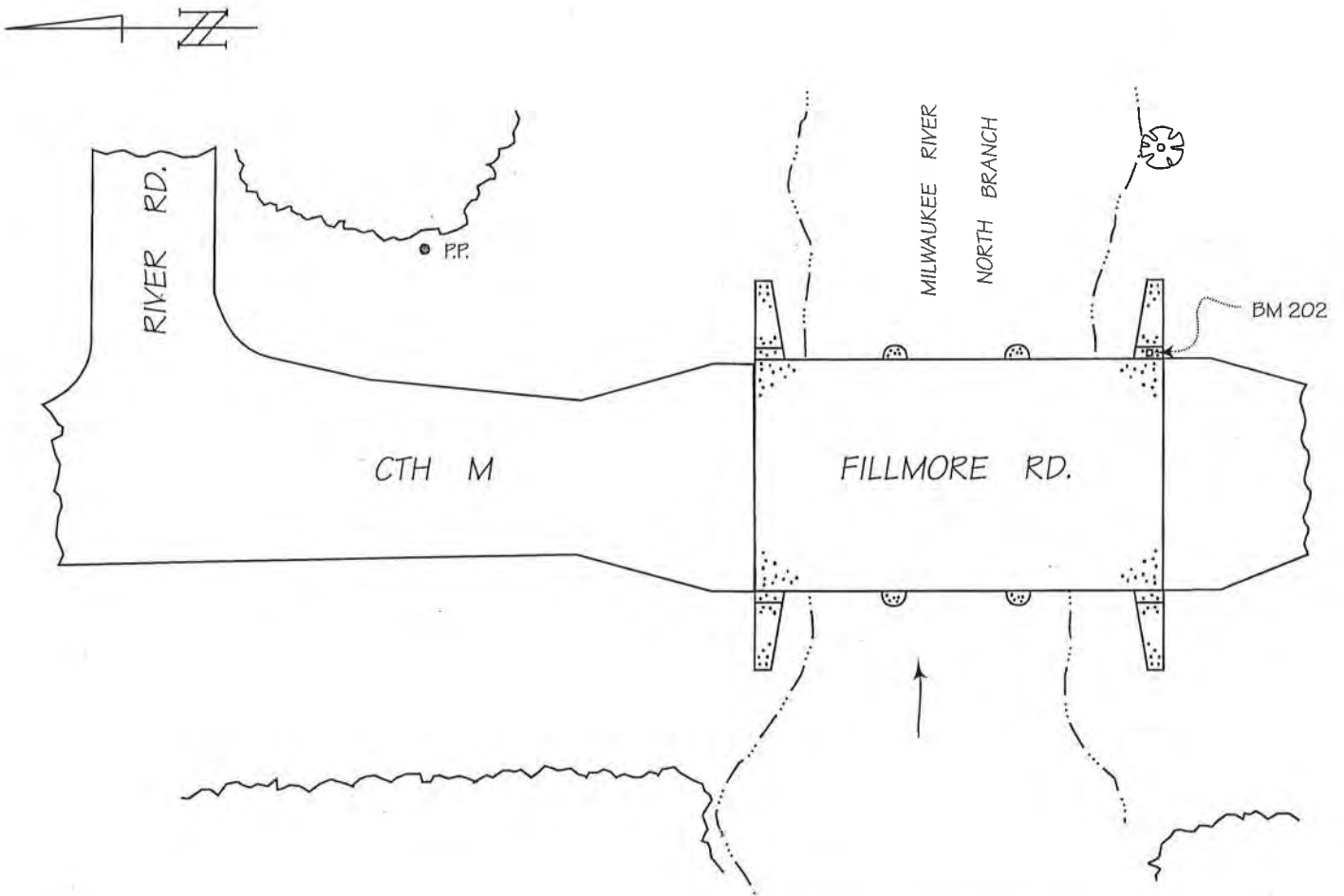
BM SET BY: WisDOT YEAR: 1986

BM CONTROL SURVEY BY: AERO-METRIC, INC. YEAR: 2004

DATUM: NATIONAL GEODETIC VERTICAL DATUM OF 1929

CONTROL ACCURACY: SECOND ORDER, CLASS II

LOCATION SKETCH:



DETAILED DESCRIPTION:

Benchmark 202 is a concrete monument with Wisconsin Department of Transportation aluminum cap in the top of the southeast concrete wingwall for bridge No. B-66-96-86.

RECOVERED BY: SEWRPC DATE: 26 MAY 2005

RECORD OF VERTICAL CONTROL STATION

SECTION 28 T. 12 N. R. 20 E. WASHINGTON COUNTY, WISCONSIN

BENCH MARK NO.: 208 ELEVATION 861.160

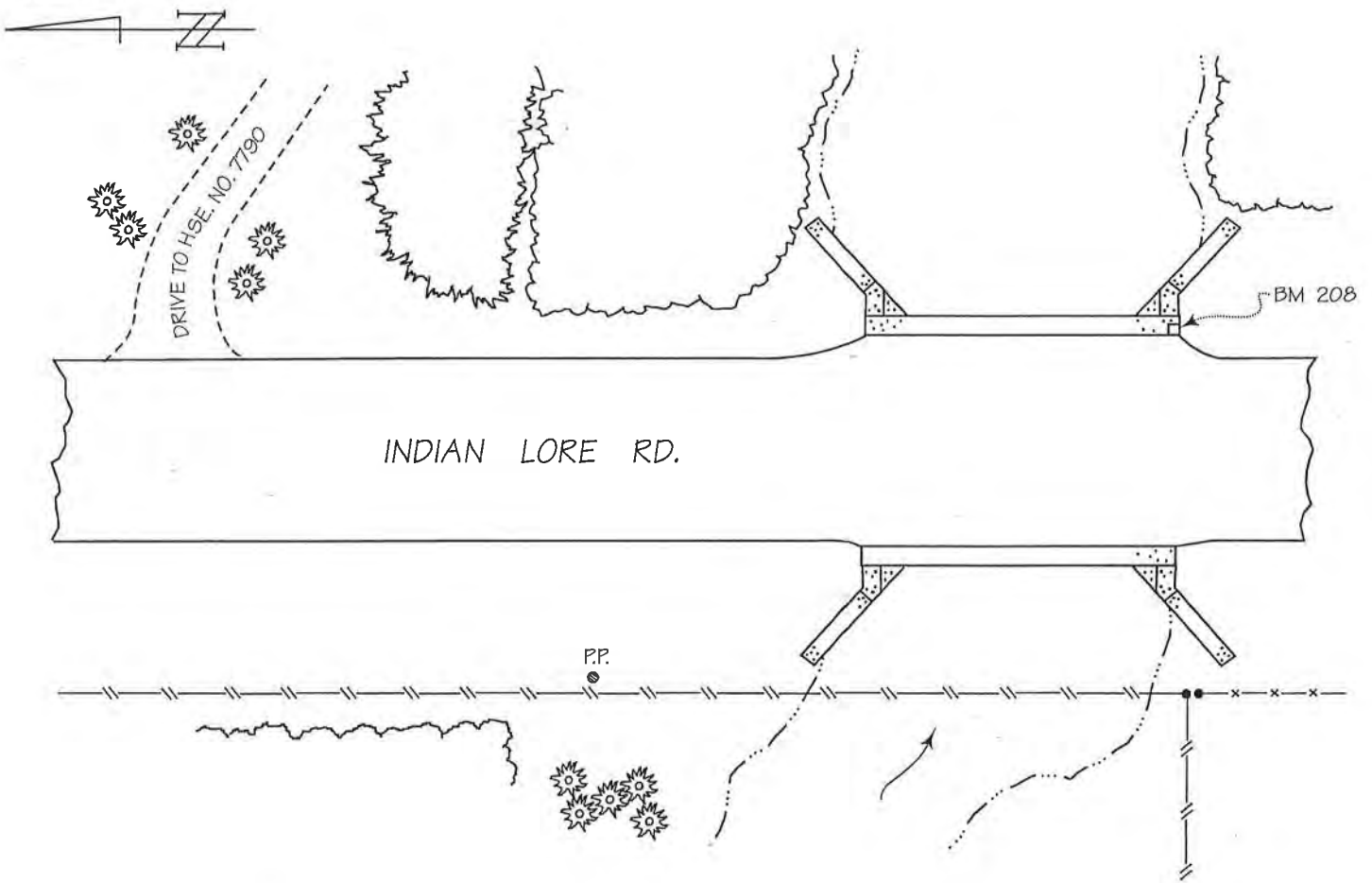
BM SET BY: AERO-METRIC, INC. YEAR: 2004

BM CONTROL SURVEY BY: AERO-METRIC, INC. YEAR: 2004

DATUM: NATIONAL GEODETIC VERTICAL DATUM OF 1929

CONTROL ACCURACY: SECOND ORDER, CLASS II

LOCATION SKETCH:



DETAILED DESCRIPTION:

Benchmark 208 is a chiseled square set in the top of the southwest corner of the concrete endwall for the bridge.

RECOVERED BY: SEWRPC DATE: 26 MAY 2005

RECORD OF VERTICAL CONTROL STATION

SECTION 29 T. 12 N. R. 20 E. WASHINGTON COUNTY, WISCONSIN

BENCH MARK NO.: 209 ELEVATION 851.292

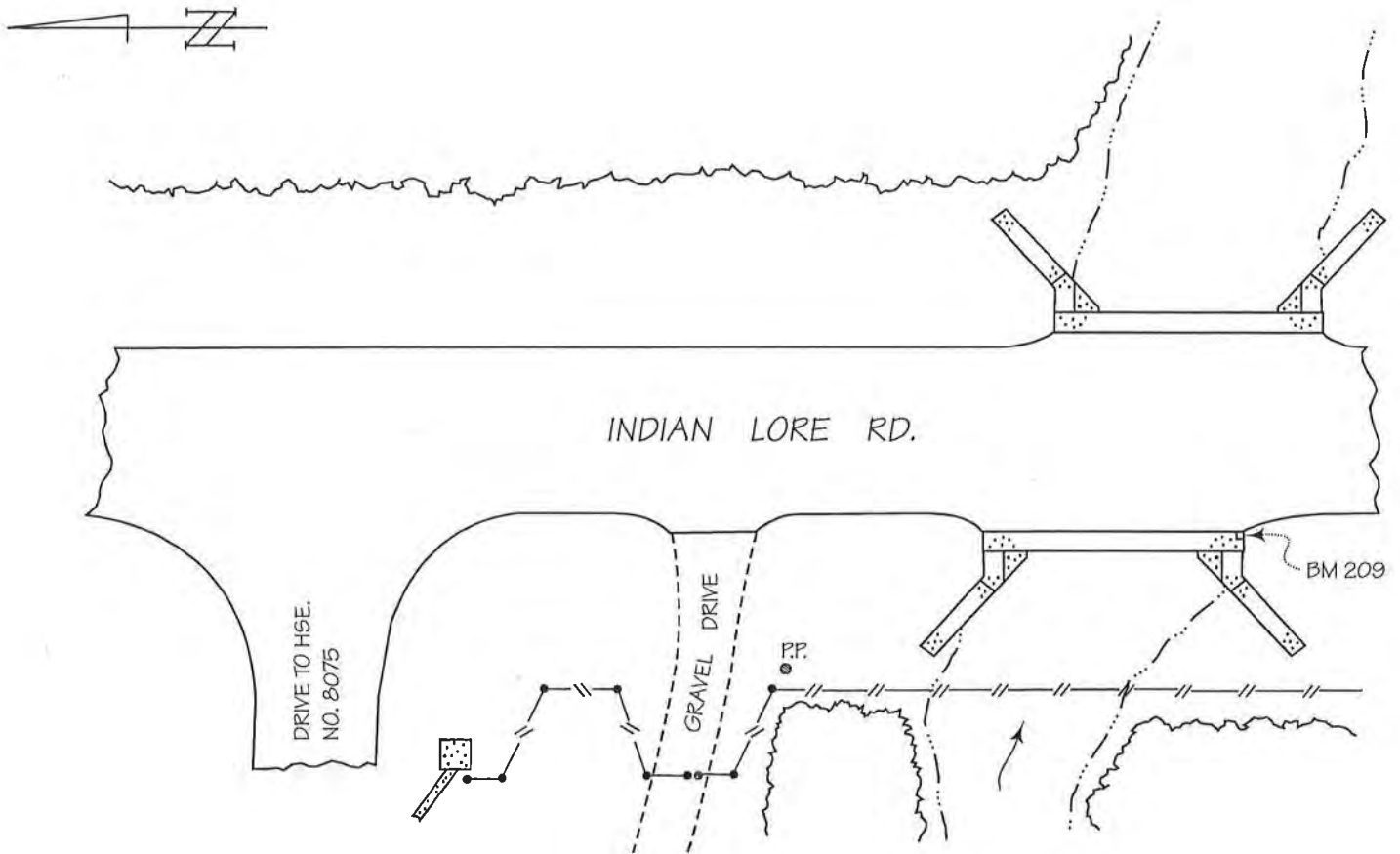
BM SET BY: AERO-METRIC, INC. YEAR: 2004

BM CONTROL SURVEY BY: AERO-METRIC, INC. YEAR: 2004

DATUM: NATIONAL GEODETIC VERTICAL DATUM OF 1929

CONTROL ACCURACY: SECOND ORDER, CLASS II

LOCATION-SKETCH:



DETAILED DESCRIPTION:

Benchmark 209 is a chiseled square set in the top of the southeast corner of the concrete headwall for the bridge.

RECOVERED BY: SEWRPC DATE: 26 MAY 2005

RECORD OF VERTICAL CONTROL STATION

SECTION 30 T. 12 N. R. 20 E. WASHINGTON COUNTY, WISCONSIN

BENCH MARK NO.: 211 ELEVATION 910.648

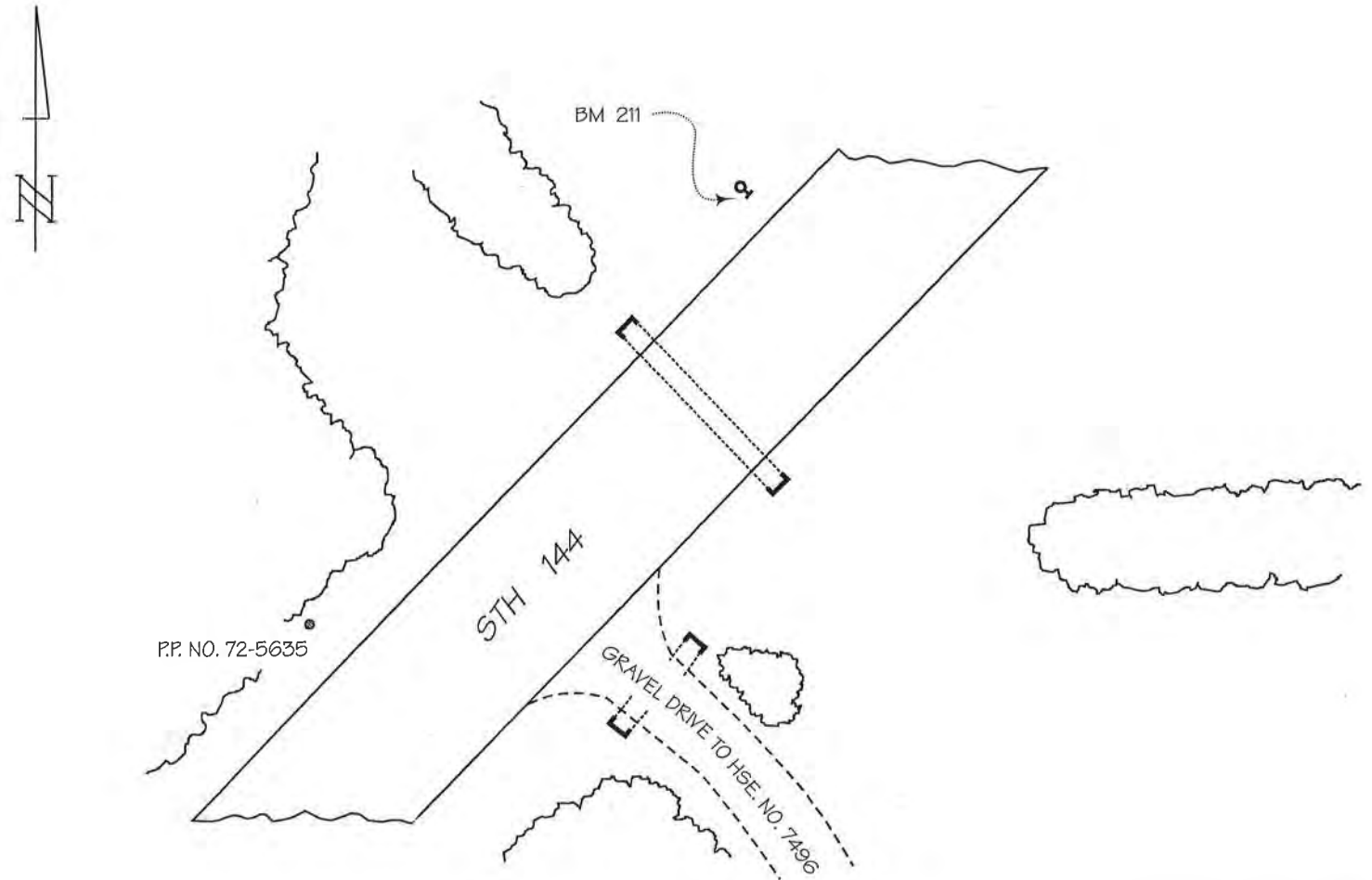
BM SET BY: AERO-METRIC, INC. YEAR: 2004

BM CONTROL SURVEY BY: AERO-METRIC, INC. YEAR: 2004

DATUM: NATIONAL GEODETIC VERTICAL DATUM OF 1929

CONTROL ACCURACY: SECOND ORDER, CLASS II

LOCATION SKETCH:



DETAILED DESCRIPTION:

Benchmark 211 is a railroad spike set in the southeast face of power pole No. 72-5636, 0.6' above grade.

RECOVERED BY: SEWRPC DATE: 26 MAY 2005

RECORD OF VERTICAL CONTROL STATION

SECTION 35 T. 12 N. R. 20 E. WASHINGTON COUNTY, WISCONSIN

BENCH MARK NAME: FARMINGTON S GPS ELEVATION 896.720

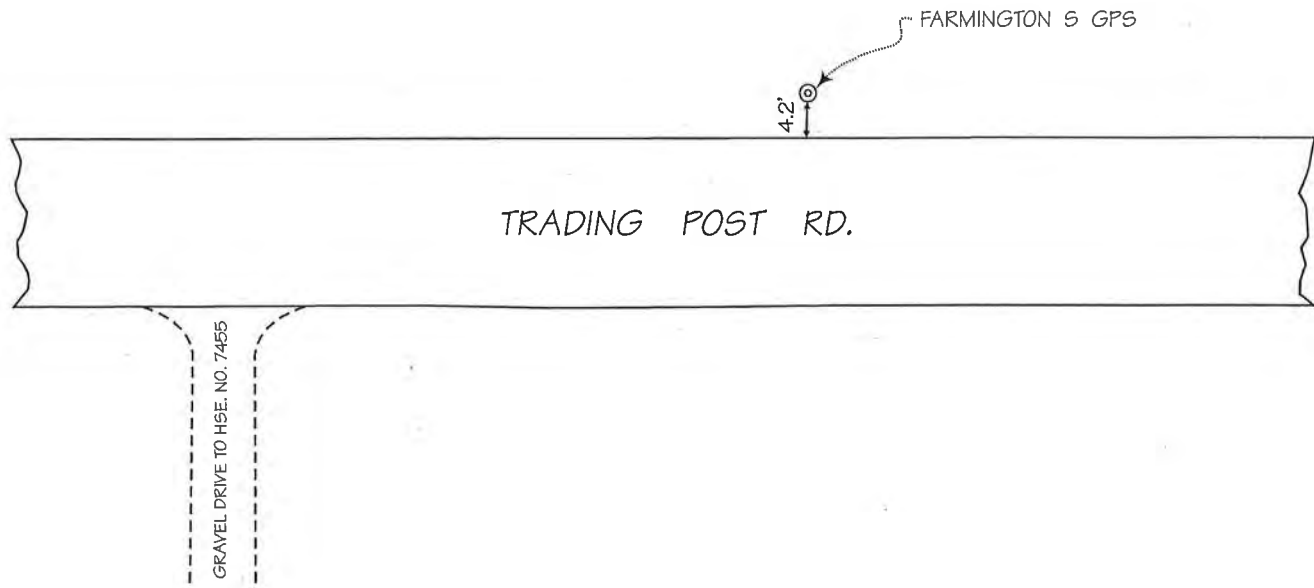
BM SET BY: WisDOT YEAR: 2000

BM CONTROL SURVEY BY: AERO-METRIC, INC. YEAR: 2004

DATUM: NATIONAL GEODETIC VERTICAL DATUM OF 1929

CONTROL ACCURACY: SECOND ORDER, CLASS II

LOCATION SKETCH:



DETAILED DESCRIPTION:

FARMINGTON S GPS is a concrete monument with Wisconsin Department of Transportation brass cap. The monument is 250'± south of the drive to house no. 7455 and 525'± north of the drive to house no. 7406.

RECOVERED BY: SEWRPC DATE: 20 MAY 2005