



GERMANTOWN



BENCHMARKS

This is a PDF of **all mapped Benchmarks 1997 forward** in T09E R20W ordered by section number.

For pre-1997 benchmarks, click to view [index map and scanned images of benchmark sheets.](#)

Please scroll to your desired benchmark.



For more information or to report problems, contact:
Scott M. Schmidt, PE, RLS
Washington County Engineer/Surveyor
Washington County Public Agency Center (PAC)
333 East Washington St, Suite 2300
P.O. Box 2003
West Bend, WI 53095-2003
Phone: 262-335-6881
Fax: 262-335-4171
Email: scott.schmidt@co.washington.wi.us

RECORD OF VERTICAL CONTROL STATION

SECTION 6 T. 9 N. R. 20 E. WASHINGTON COUNTY, WISCONSIN

BENCH MARK NO.: 2X42 ELEVATION 916.871

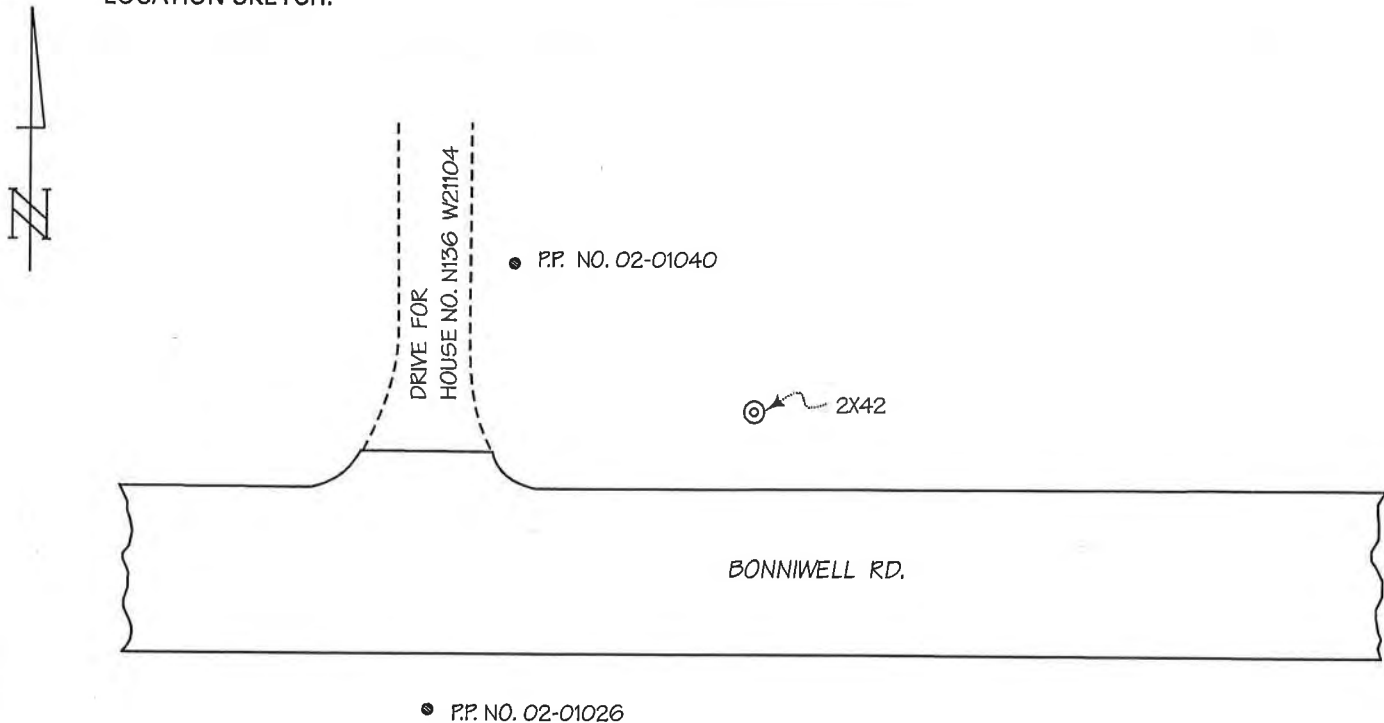
BM SET BY: WisDOT YEAR: 1999

BM CONTROL SURVEY BY: AERO-METRIC, INC. YEAR: 2003

DATUM: NATIONAL GEODETIC VERTICAL DATUM OF 1929

CONTROL ACCURACY: SECOND ORDER, CLASS II

LOCATION SKETCH:



DETAILED DESCRIPTION:

2X42 is a concrete monument with WisDOT brass cap.

RECOVERED BY: SEWRPC DATE: 14 JANUARY 2004

RECORD OF VERTICAL CONTROL STATION

SECTION 6 T. 9 N. R. 20 E. WASHINGTON COUNTY, WISCONSIN

BENCH MARK NO.: 111 ELEVATION 857.294

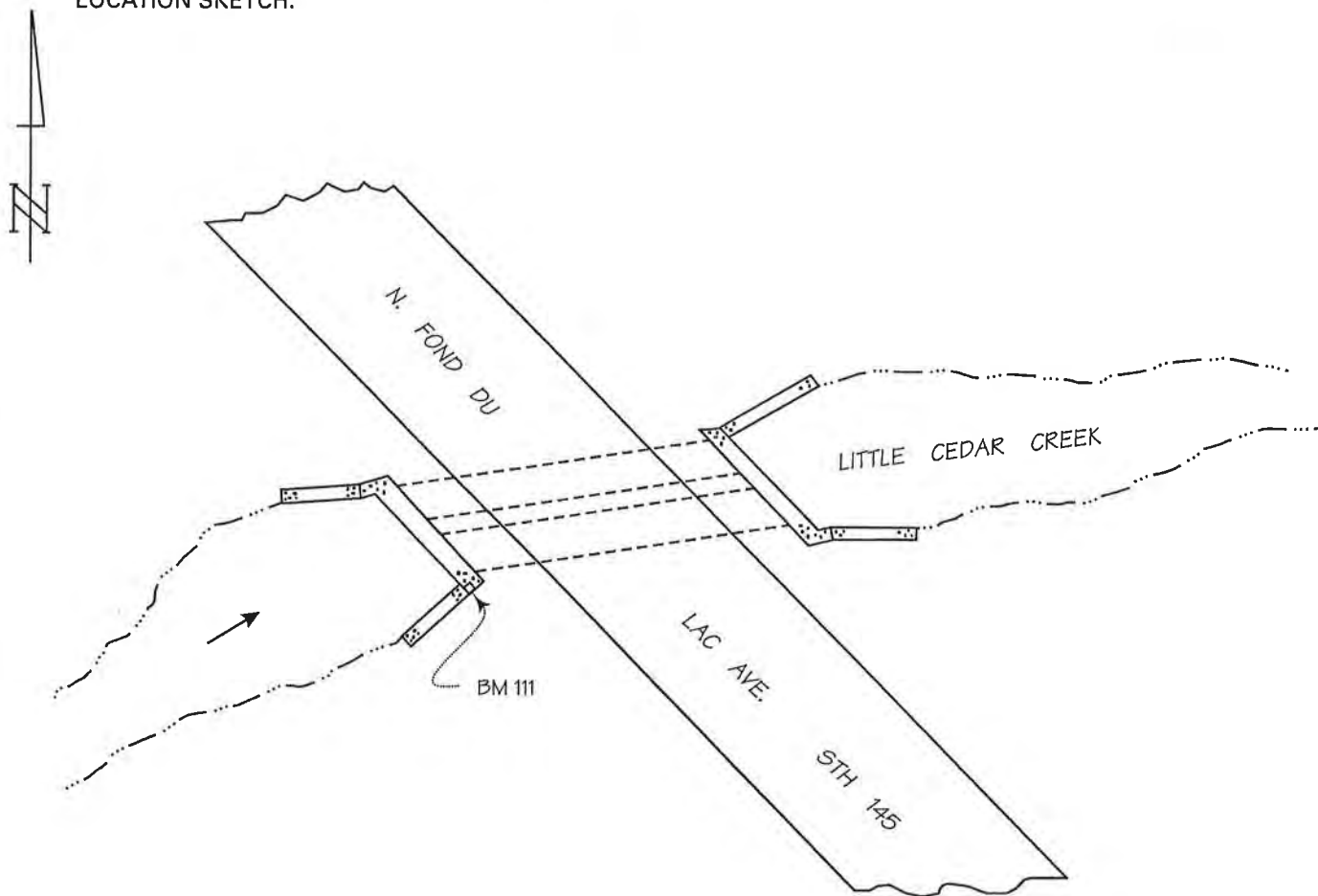
BM SET BY: AERO-METRIC, INC. YEAR: 2003

BM CONTROL SURVEY BY: AERO-METRIC, INC. YEAR: 2003

DATUM: NATIONAL GEODETIC VERTICAL DATUM OF 1929

CONTROL ACCURACY: SECOND ORDER, CLASS II

LOCATION SKETCH:



DETAILED DESCRIPTION:

Benchmark 111 is a chiseled square set in the top of the southeast end of the concrete headwall of twin box culvert No. B-66-91-85.

RECOVERED BY: SEWRPC DATE: 14 JANUARY 2004

RECORD OF VERTICAL CONTROL STATION

SECTION 8 T. 9 N. R. 20 E. WASHINGTON COUNTY, WISCONSIN

BENCH MARK NO.: 2X41 ELEVATION 946.871

BM SET BY: WisDOT YEAR: 1999

BM CONTROL SURVEY BY: AERO-METRIC, INC. YEAR: 2003

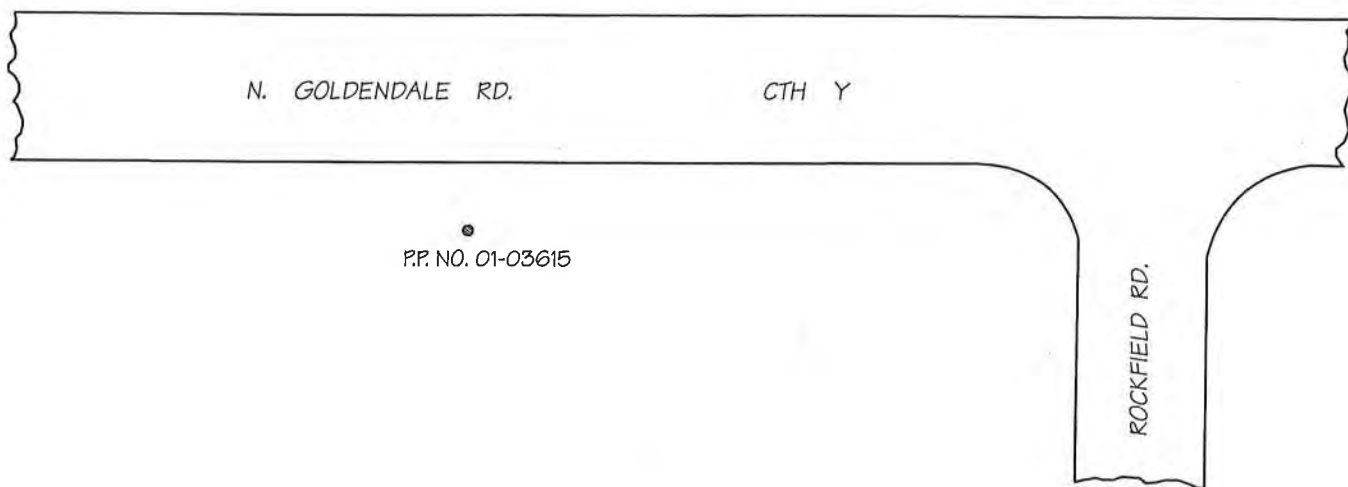
DATUM: NATIONAL GEODETIC VERTICAL DATUM OF 1929

CONTROL ACCURACY: SECOND ORDER, CLASS II

LOCATION SKETCH:



⊙ 2X41



DETAILED DESCRIPTION:

2X41 is a concrete monument with WisDOT brass cap located approximately 250 ft. north of Rockfield Rd.

RECOVERED BY: SEWRPC DATE: 14 JANUARY 2004

RECORD OF VERTICAL CONTROL STATION

SECTION 10 T. 9 N. R. 20 E. WASHINGTON COUNTY, WISCONSIN

BENCH MARK NO.: 109 ELEVATION 870.441

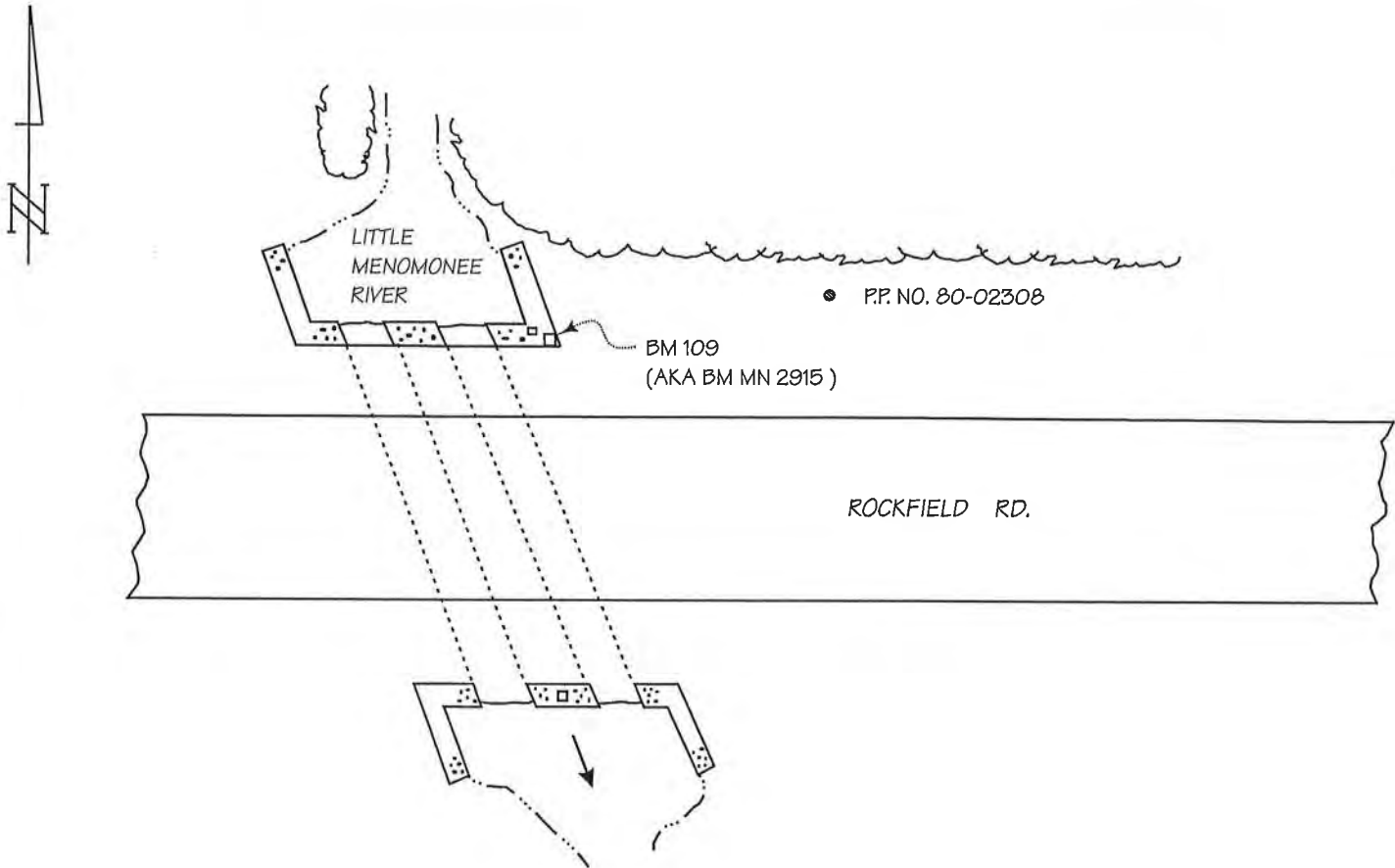
BM SET BY: AERO-METRIC, INC. YEAR: 2003

BM CONTROL SURVEY BY: AERO-METRIC, INC. YEAR: 2003

DATUM: NATIONAL GEODETIC VERTICAL DATUM OF 1929

CONTROL ACCURACY: SECOND ORDER, CLASS II

LOCATION SKETCH:



DETAILED DESCRIPTION:

Benchmark 109 is a chiseled square set in the top of the southeast corner of the northeast concrete wingwall of a twin metal culvert.

RECOVERED BY: SEWRPC DATE: 30 DECEMBER 2003

RECORD OF VERTICAL CONTROL STATION

SECTION 10 T. 9 N. R. 20 E. WASHINGTON COUNTY, WISCONSIN

BENCH MARK NO.: RL-7 ELEVATION 884.274

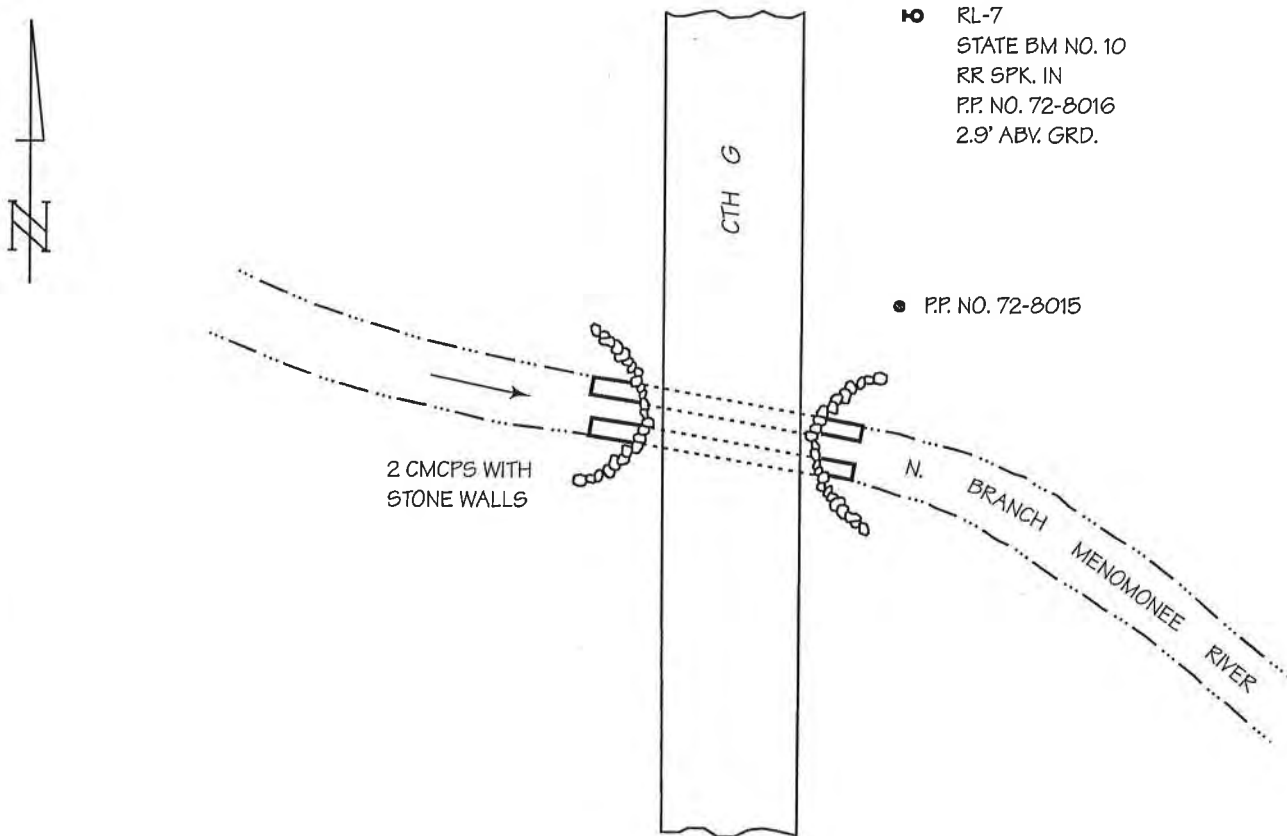
BM SET BY: ALSTER & ASSOC., INC. YEAR: 1973

BM CONTROL SURVEY BY: AERO-METRIC, INC. YEAR: 2003

DATUM: NATIONAL GEODETIC VERTICAL DATUM OF 1929

CONTROL ACCURACY: SECOND ORDER, CLASS II

LOCATION SKETCH:



DETAILED DESCRIPTION:

Structure No. 2920 is located about 0.15 mile N of Rockfield.

RECOVERED BY: AERO-METRIC, INC. DATE: 6 FEBRUARY 2003

RECORD OF VERTICAL CONTROL STATION

SECTION 14 T. 9 N. R. 20 E. WASHINGTON COUNTY, WISCONSIN

BENCH MARK NO. MN-44 RESET ELEVATION 855.222

REFERENCE BENCH MARK NO. RL-44 ELEVATION 854.358

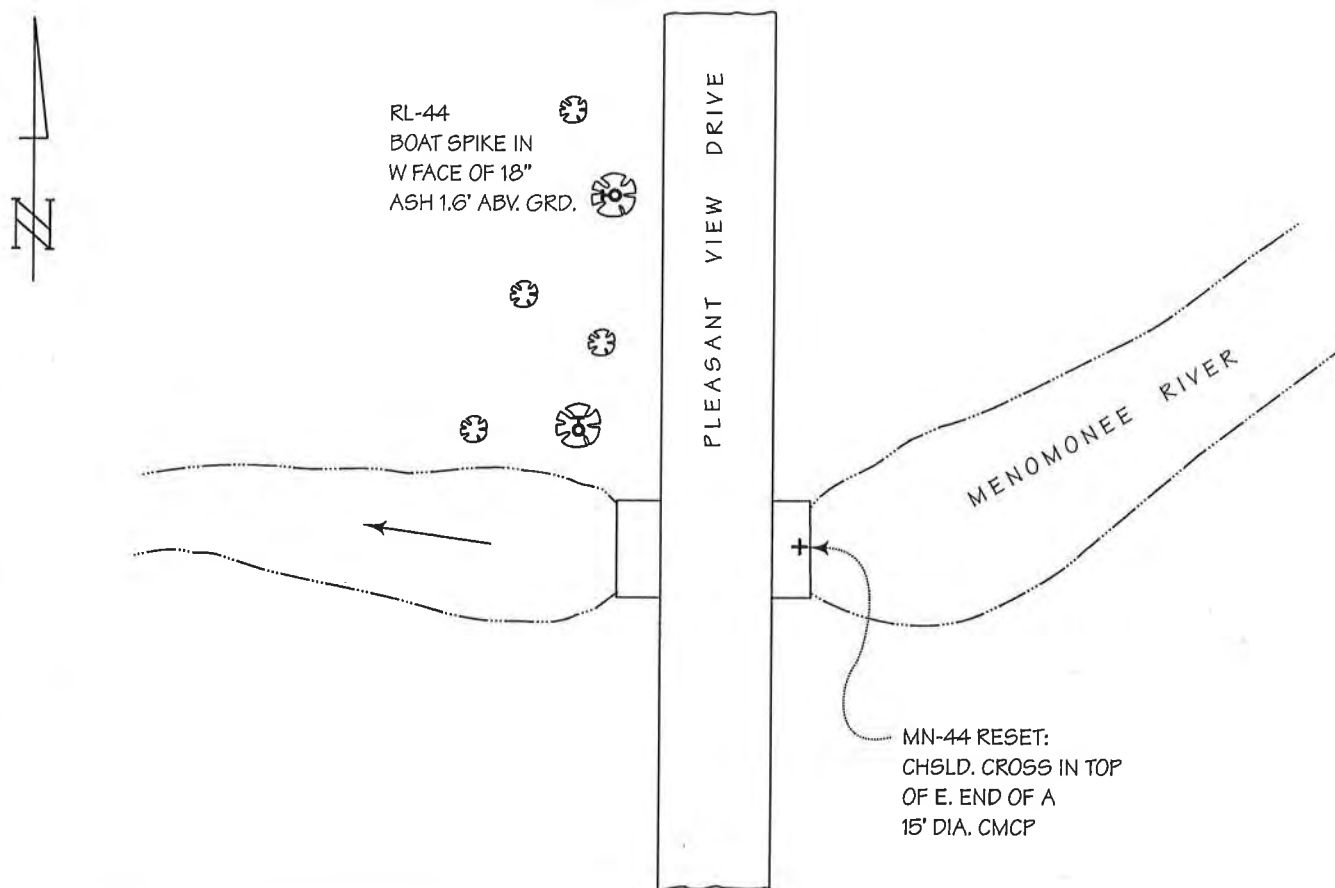
BM/RBM SET BY: AYRES ASSOC./ALSTER & ASSOC., INC. YEAR: 2001/1973

BM/RBM CONTROL SURVEY BY: AYRES ASSOC./SEWRPC YEAR: 2001/2004

DATUM: NATIONAL GEODETIC VERTICAL DATUM OF 1929

CONTROL ACCURACY: SECOND ORDER, CLASS II

LOCATION SKETCH:



DETAILED DESCRIPTION:

Structure No. 895 is located about 0.2 mile S of the center of Section 14, T 9 N, R 20 E.

RECOVERED BY: AYRES ASSOC. DATE: 3 DECEMBER 2001



Bone Street Inc
10-24-10

36	31	32	33	34	35	36
1	6	5	4	3	2	1
12	7	6	5	10	11	12
13	18	17	15	15	14	13
24	19	20	21	22	23	24
25	30	29	28	27	26	25
36	31	32	33	34	35	36



920141

Town of Germantown

Washington County

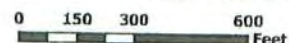
Legend

- PLSS_Monument
- PLSS_Township
- Sections_Germantown
- QuarterSections_Germantown
- Parcel

Data Sources:
 Washington County Land Information Office
 2006 Aerial Image
 2006 Parcel data & boundaries
 2004 Contours and Structures
 FCC
 Communication: Layers (current)
 Airports (current)
 Wisconsin DNR
 Water (current)
 Ecology (current)



1 inch = 300 feet



Date: Nov 01, 2010

Legend

L:\Wisconsin\Counties\WashingtonCounty\2010_TownofGermantown

RECORD OF VERTICAL CONTROL STATION

SECTION 15 T 09 N, R 20 E, WASHINGTON COUNTY, WISCONSIN

BENCH MARK NO.: 15-1, 15-2 & 15-3

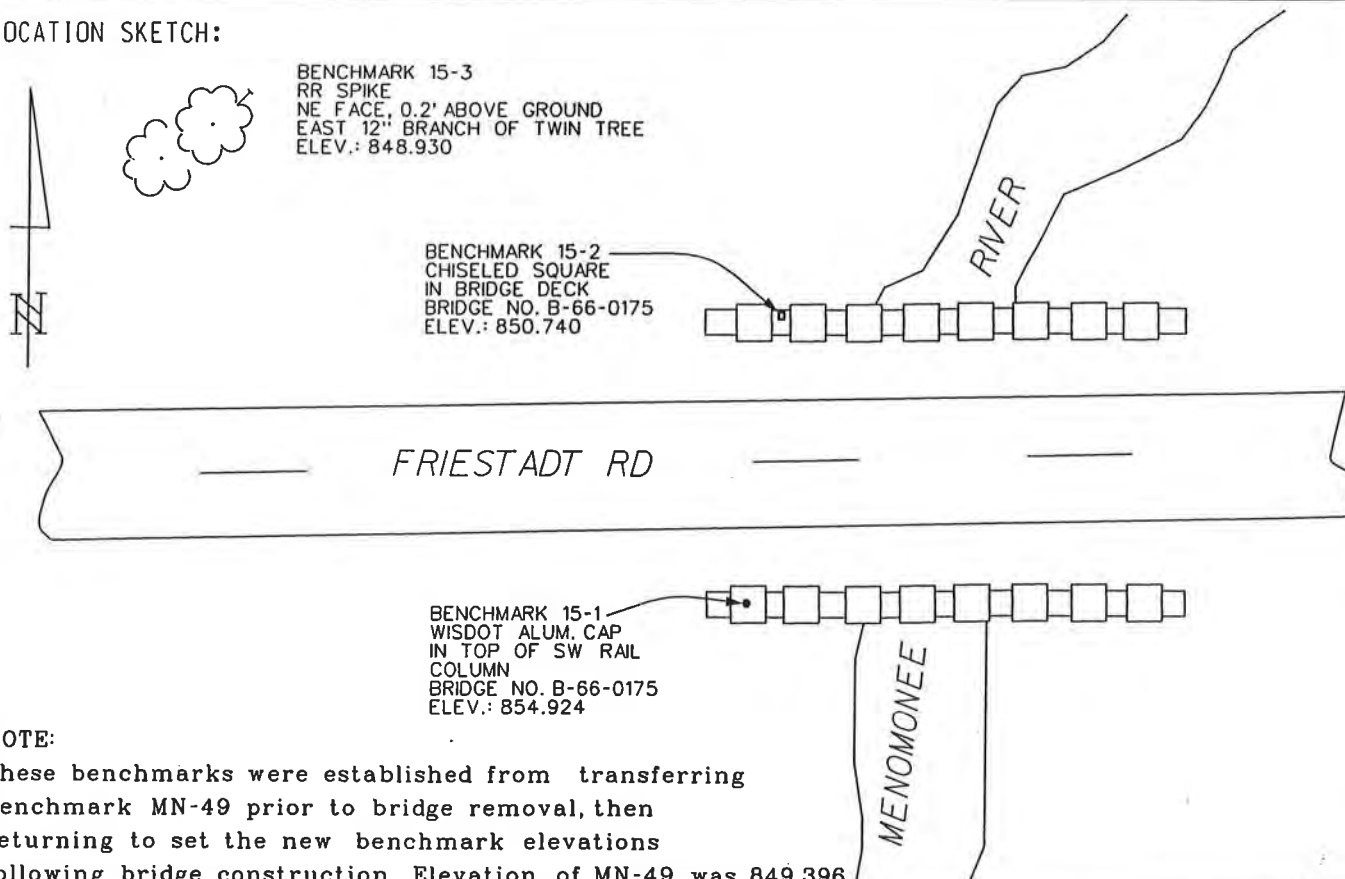
BM SET BY: WASHINGTON COUNTY

BM CONTROL SURVEY BY: ALSTER & ASSOCIATES, INC.

DATUM: NATIONAL GEODETIC VERTICAL DATUM OF 1929

CONTROL ACCURACY: SECOND ORDER, CLASS II

LOCATION SKETCH:



NOTE:

These benchmarks were established from transferring benchmark MN-49 prior to bridge removal, then returning to set the new benchmark elevations following bridge construction. Elevation of MN-49 was 849.396.

DETAILED DESCRIPTION:

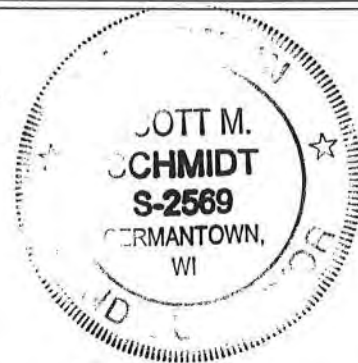
Benchmark 15-1 is a Wisconsin DOT monument with aluminum cap set in the top of the southwest rail column in bridge number B-66-0175.

Benchmark 15-2 is a chiseled square set in the bridge wingwall in bridge number B-66-0175.

Benchmark 15-3 is a railroad spike set in the northeast face of the east branch of a twin tree.

Bridge B-66-0175 was constructed in the summer of 2008 and is approximately 730' west of the intersection of Freistadt Road and State Highway 145 (Fond du Lac Avenue).

RECOVERED BY: WASHINGTON COUNTY DATE: 21 October 2008



Scott M. Schmidt

FORM PREPARED BY SOUTHEASTERN WISCONSIN REGIONAL PLANNING COMMISSION

RECORD OF VERTICAL CONTROL STATION

SECTION 15 T. 9 N. R. 20 E. WASHINGTON COUNTY, WISCONSIN

BENCH MARK NO.: 606 ELEVATION 864.458

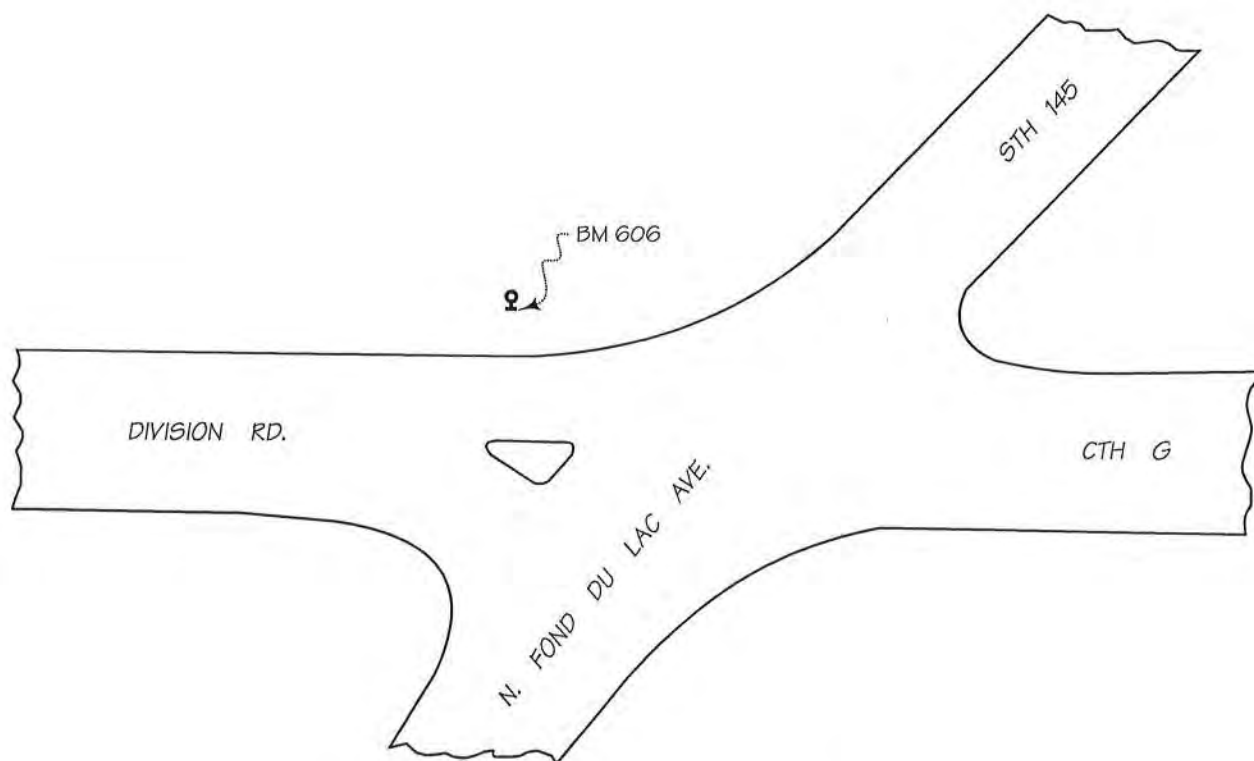
BM SET BY: AERO-METRIC, INC. YEAR: 2003

BM CONTROL SURVEY BY: AERO-METRIC, INC. YEAR: 2003

DATUM: NATIONAL GEODETIC VERTICAL DATUM OF 1929

CONTROL ACCURACY: SECOND ORDER, CLASS II

LOCATION SKETCH:



DETAILED DESCRIPTION:

Benchmark 606 is a railroad spike set in the west face of power pole No. 72-8159, 0.7 ft. above grade.

RECOVERED BY: SEWRPC DATE: 14 JANUARY 2004

RECORD OF VERTICAL CONTROL STATION

SECTION 15 T. 9 N. R. 20 E. WASHINGTON COUNTY, WISCONSIN

BENCH MARK NO.: 106 ELEVATION 856.586

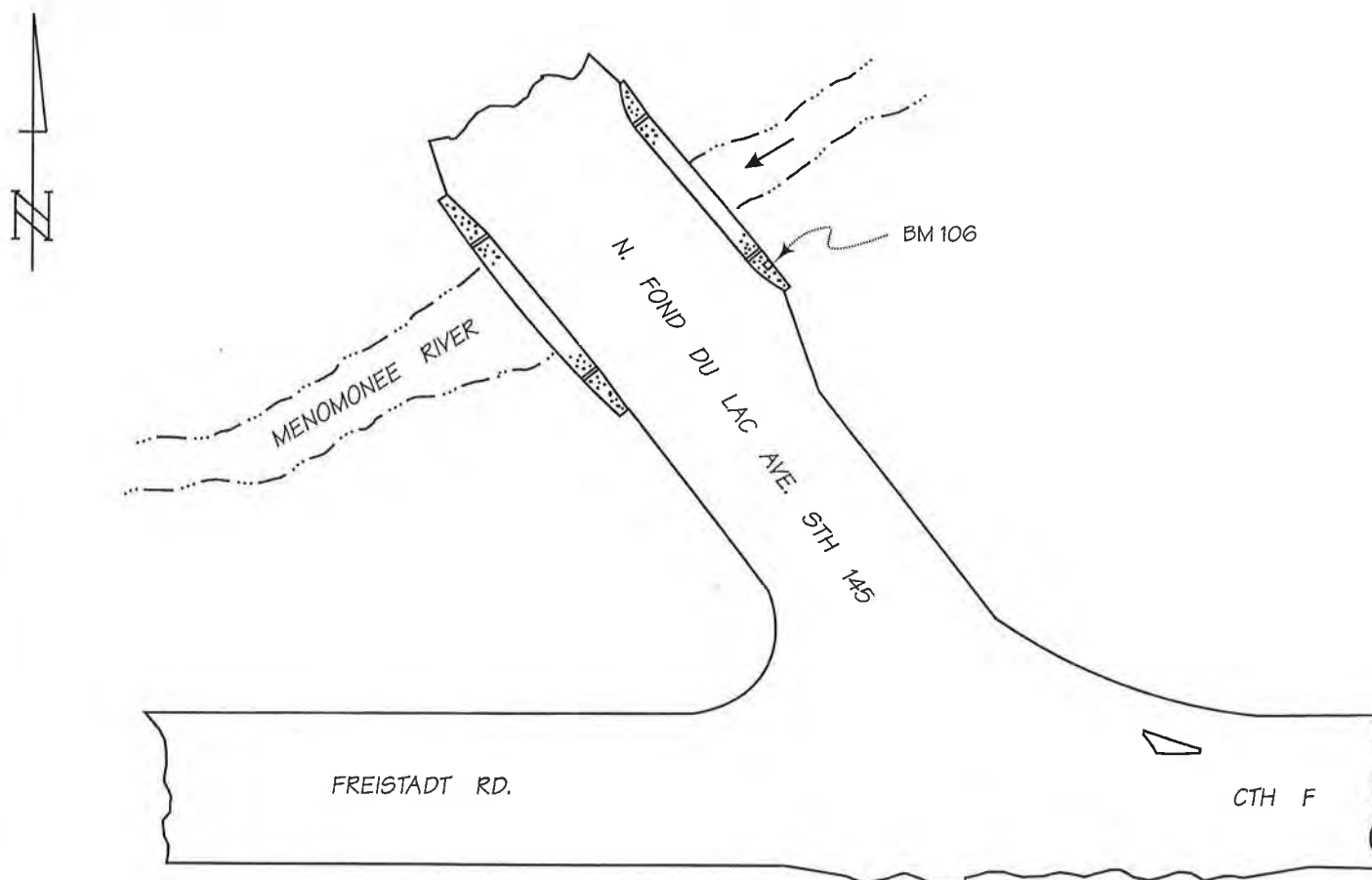
BM SET BY: AERO-METRIC, INC. YEAR: 2003

BM CONTROL SURVEY BY: AERO-METRIC, INC. YEAR: 2003

DATUM: NATIONAL GEODETIC VERTICAL DATUM OF 1929

CONTROL ACCURACY: SECOND ORDER, CLASS II

LOCATION SKETCH:



DETAILED DESCRIPTION:

Benchmark 106 is a chiseled square set in the top of the southeast end of the concrete headwall of bridge No. B-66-99-90.

RECOVERED BY: SEWRPC DATE: 14 JANUARY 2004

RECORD OF VERTICAL CONTROL STATION

SECTION 17 T. 9 N. R. 20 E. WASHINGTON COUNTY, WISCONSIN

BENCH MARK NO.: G 86 ELEVATION 902.588

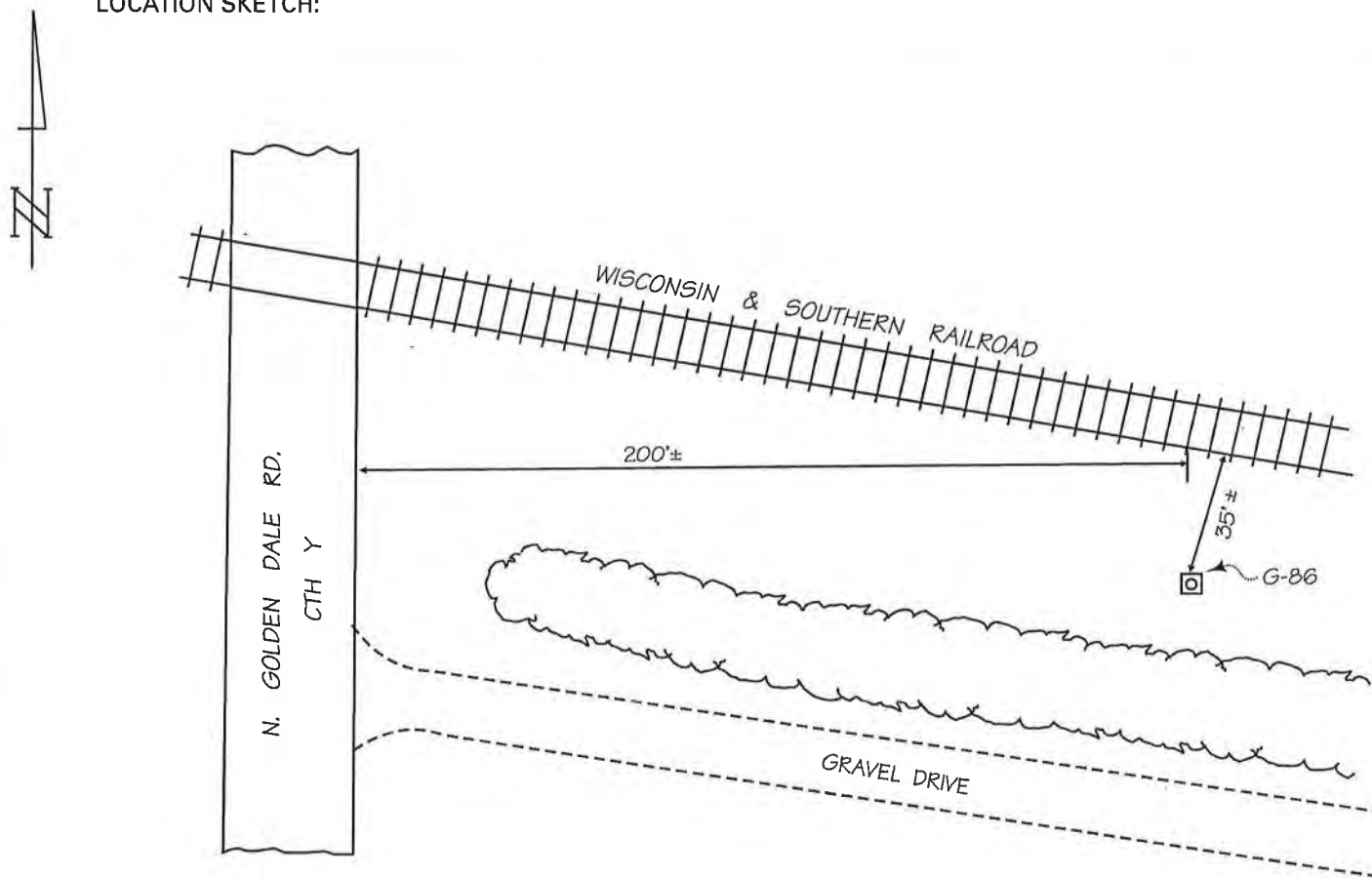
BM SET BY: U.S.C. & G.S. YEAR: 1934

BM CONTROL SURVEY BY: AERO-METRIC, INC. YEAR: 1997

DATUM: NATIONAL GEODETIC VERTICAL DATUM OF 1929

CONTROL ACCURACY: SECOND ORDER, CLASS II

LOCATION SKETCH:



DETAILED DESCRIPTION:

G 86 is a concrete monument with U.S.C. & G.S. brass cap.

RECOVERED BY: SEWRPC DATE: 14 JANUARY 2004

RECORD OF VERTICAL CONTROL STATION

SECTION 17 T. 9 N. R. 20 E. WASHINGTON COUNTY, WISCONSIN

BENCH MARK NO.: SS-04-08 ELEVATION 897.493

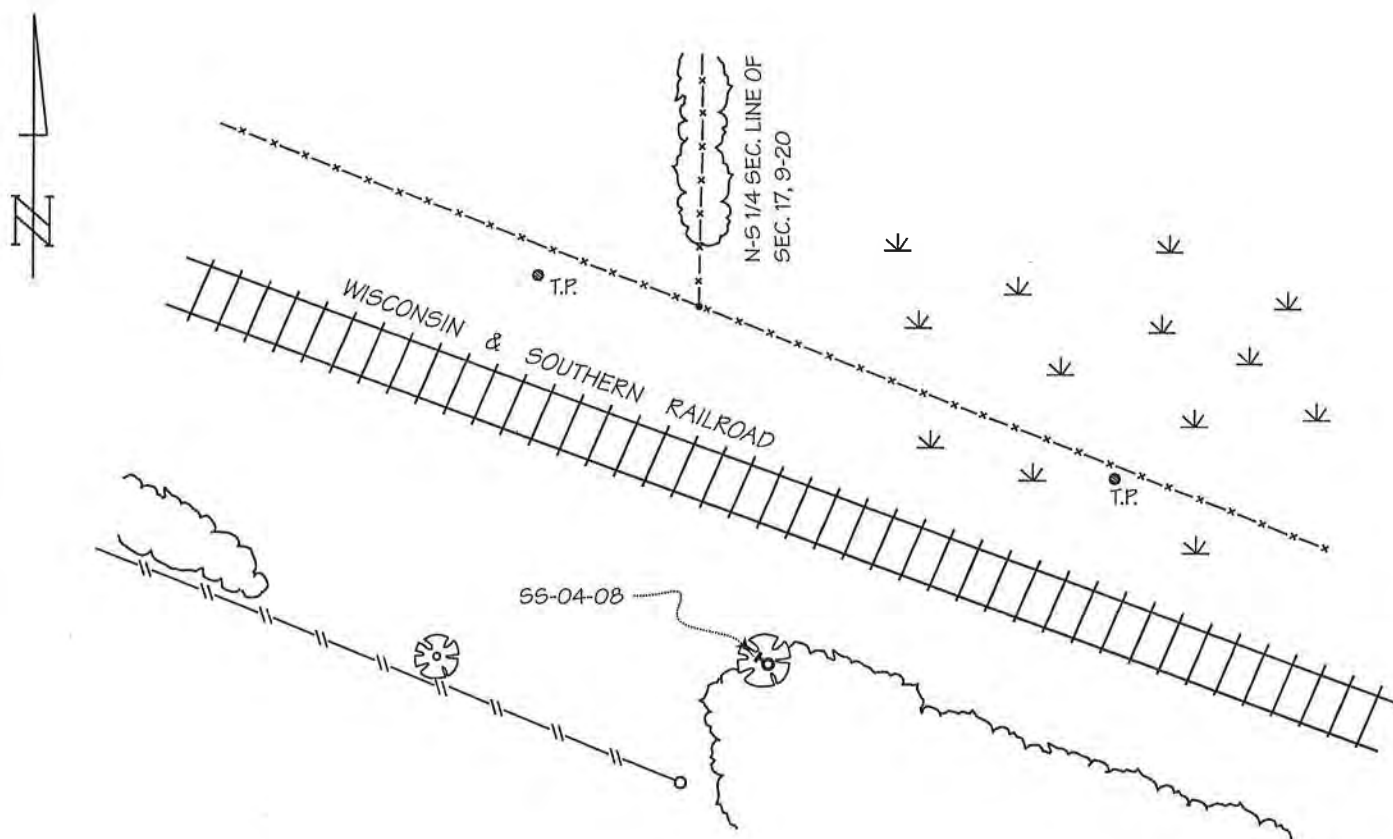
BM SET BY: SEWRPC YEAR: 2004

BM CONTROL SURVEY BY: SEWRPC YEAR: 2004

DATUM: NATIONAL GEODETIC VERTICAL DATUM OF 1929

CONTROL ACCURACY: SECOND ORDER, CLASS II

LOCATION SKETCH:



DETAILED DESCRIPTION:

SS-04-08 is a railroad spike set in the northwest face of an 18" Cherry, 0.3 ft. above grade.

RECOVERED BY: SEWRPC DATE: 2 FEBRUARY 2004

RECORD OF VERTICAL CONTROL STATION

SECTION 18 T. 9 N. R. 20 E. WASHINGTON COUNTY, WISCONSIN

BENCH MARK NO.: 108 ELEVATION 900.537

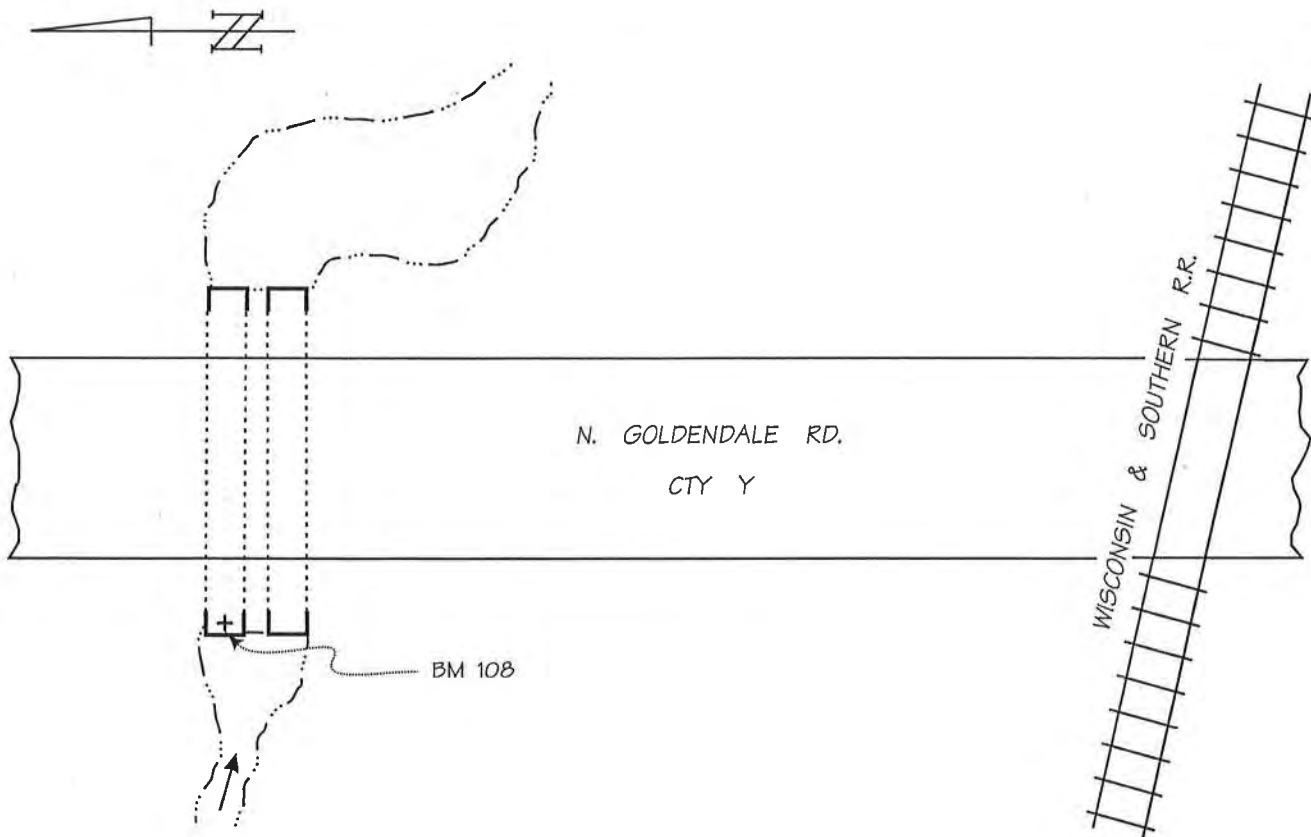
BM SET BY: AERO-METRIC, INC. YEAR: 2003

BM CONTROL SURVEY BY: AERO-METRIC, INC. YEAR: 2003

DATUM: NATIONAL GEODETIC VERTICAL DATUM OF 1929

CONTROL ACCURACY: SECOND ORDER, CLASS II

LOCATION SKETCH:



DETAILED DESCRIPTION:

Benchmark 108 is a chiseled cross set in the top of the northerly 48-inch-diameter CMCP, 0.2 ft. east of the west end, 350'± north of the Wisconsin & Southern Railroad.

RECOVERED BY: SEWRPC DATE: 14 JANUARY 2004

RECORD OF VERTICAL CONTROL STATION

SECTION 18 T. 9 N. R. 20 E. WASHINGTON COUNTY, WISCONSIN

BENCH MARK NO.: 605 ELEVATION 937.341

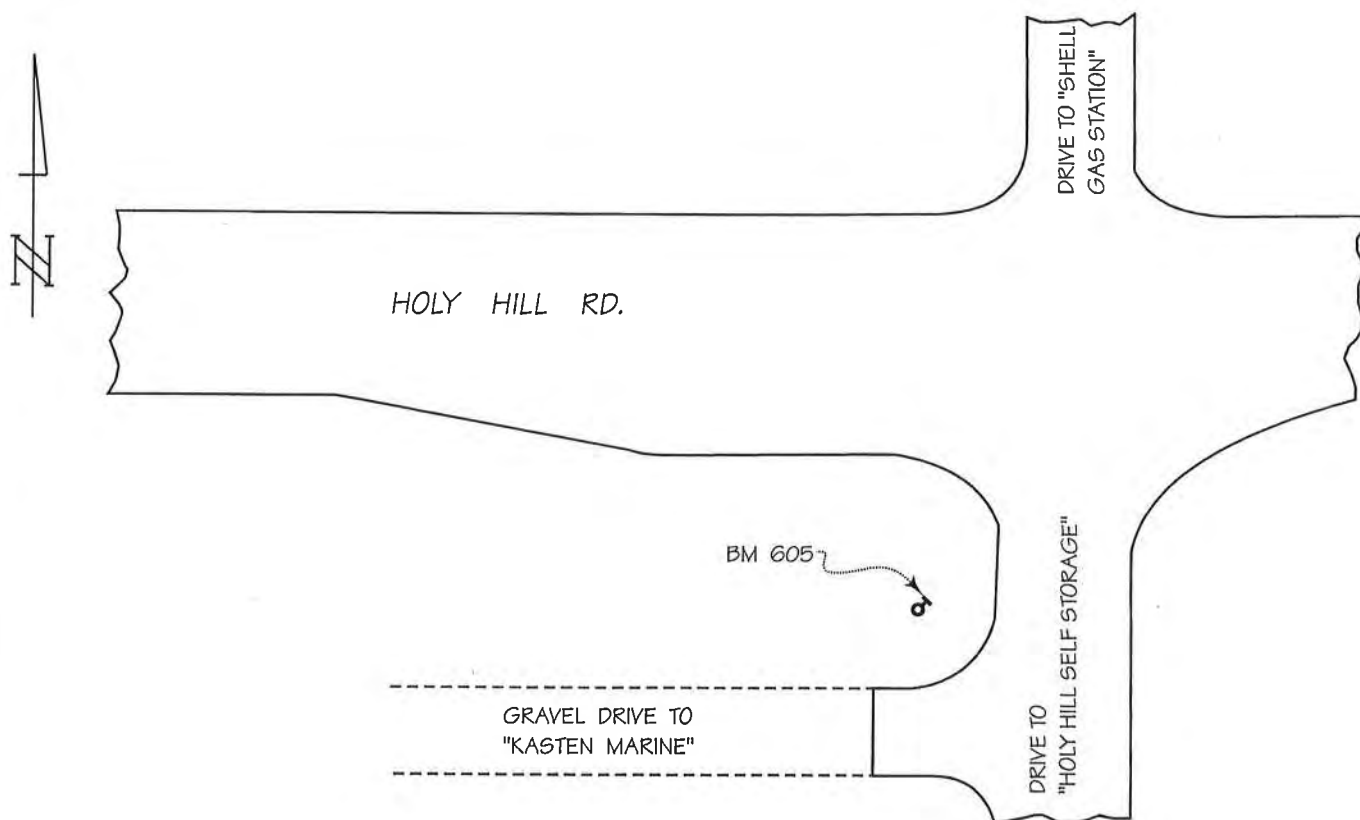
BM SET BY: AERO-METRIC, INC. YEAR: 2003

BM CONTROL SURVEY BY: AERO-METRIC, INC. YEAR: 2003

DATUM: NATIONAL GEODETIC VERTICAL DATUM OF 1929

CONTROL ACCURACY: SECOND ORDER, CLASS II

LOCATION SKETCH:



DETAILED DESCRIPTION:

Benchmark 605 is a railroad spike set in the northwest face of power pole No. 86-08003, 2.4 ft. above grade.

RECOVERED BY: SEWRPC DATE: 11 FEBRUARY 2004

RECORD OF VERTICAL CONTROL STATION

SECTION 19 T. 9 N. R. 20 E. WASHINGTON COUNTY, WISCONSIN

BENCH MARK NO.: 999 ELEVATION 997.135

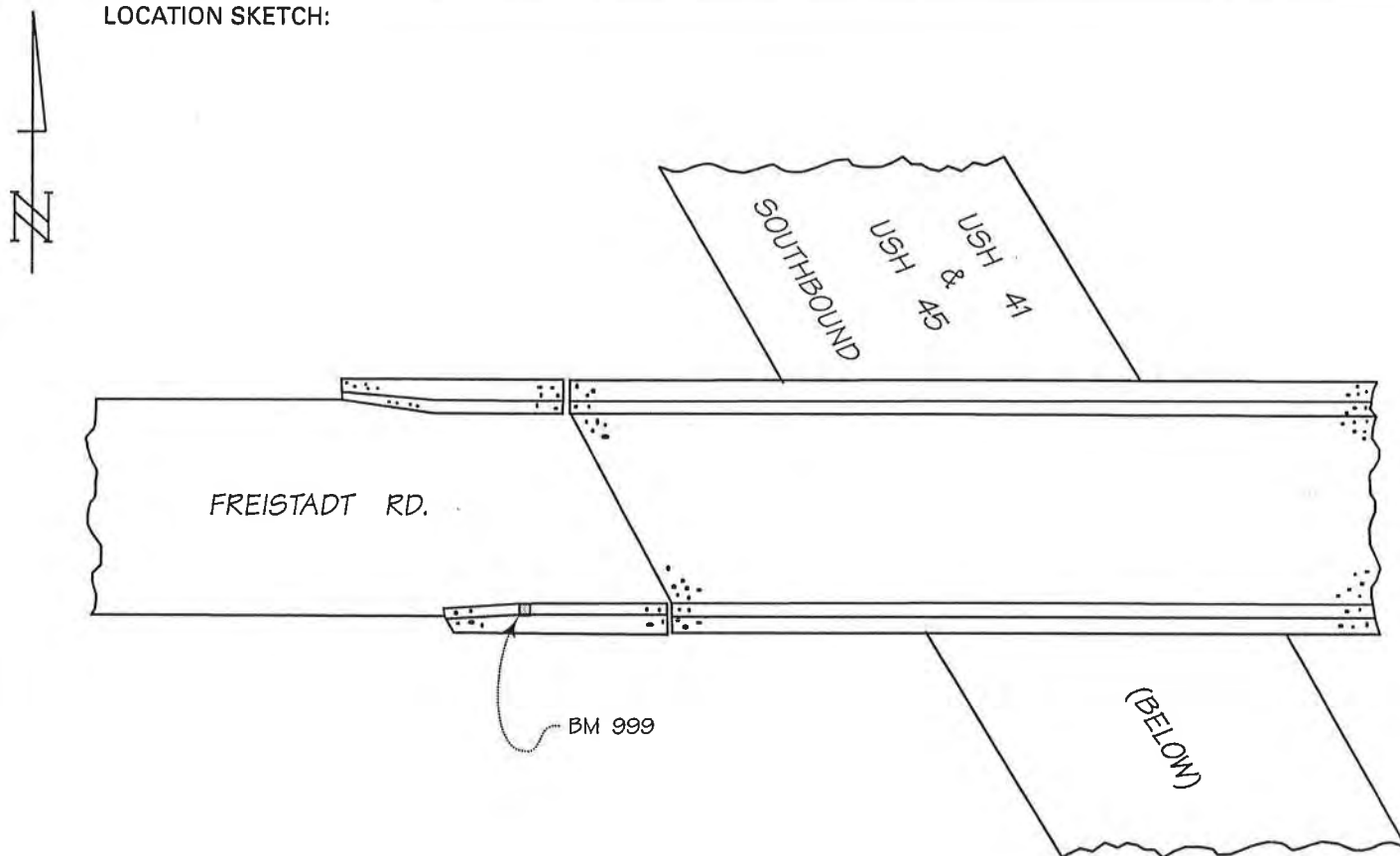
BM SET BY: WisDOT YEAR: 1969

BM CONTROL SURVEY BY: AERO-METRIC, INC. YEAR: 2003

DATUM: NATIONAL GEODETIC VERTICAL DATUM OF 1929

CONTROL ACCURACY: SECOND ORDER, CLASS II

LOCATION SKETCH:



DETAILED DESCRIPTION:

Benchmark 999 is a WisDOT brass cap set in the top of the concrete water table of the southwest concrete parapet wall of bridge No. B-66-35-69, 0.6 ft. above the roadway surface.

RECOVERED BY: SEWRPC DATE: 14 JANUARY 2004

RECORD OF VERTICAL CONTROL STATION

SECTION 21 T. 9 N. R. 20 E. WASHINGTON COUNTY, WISCONSIN

BENCH MARK NO.: 107 ELEVATION 853.778

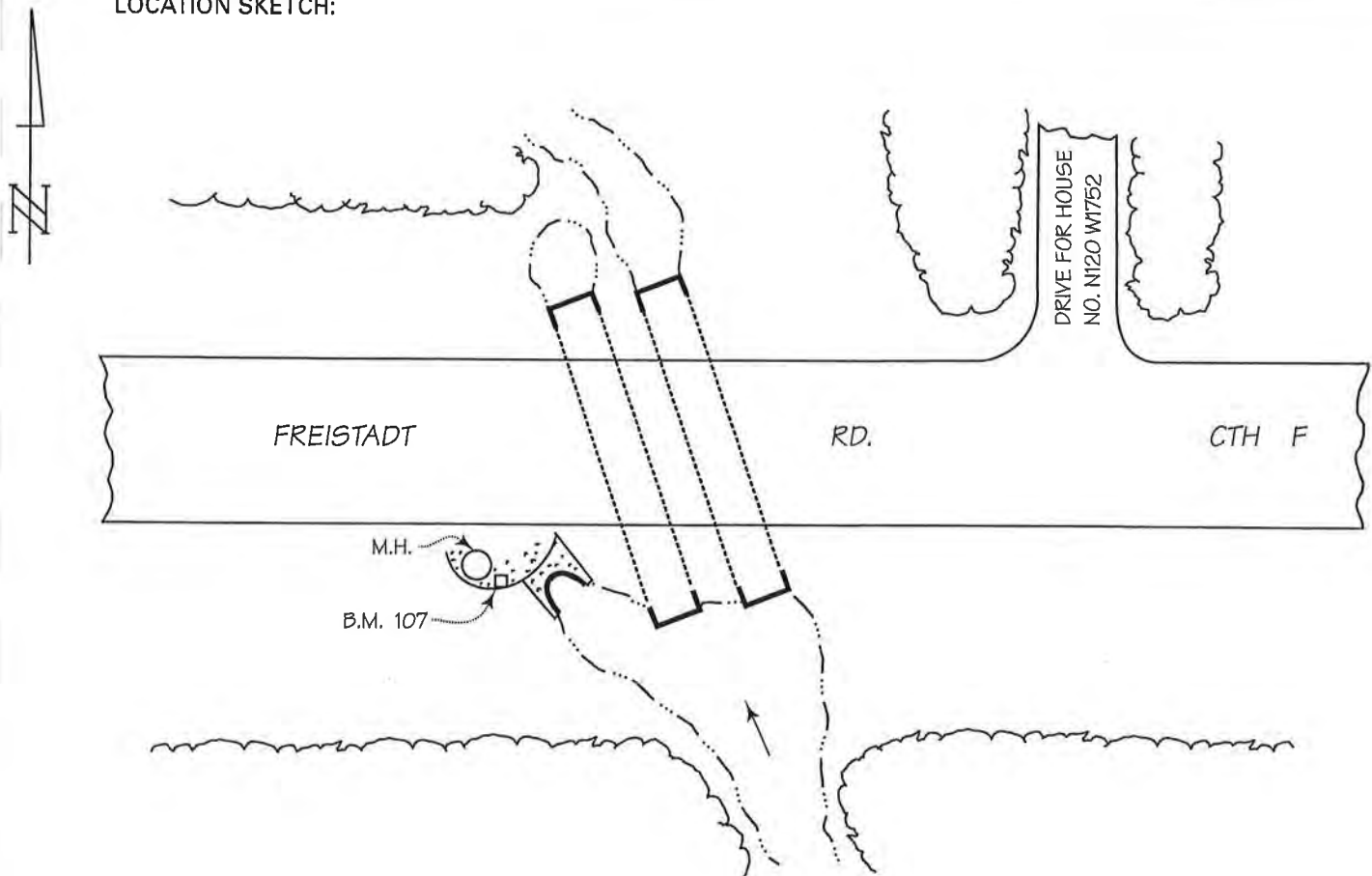
BM SET BY: AERO-METRIC, INC. YEAR: 2003

BM CONTROL SURVEY BY: AERO-METRIC, INC. YEAR: 2003

DATUM: NATIONAL GEODETIC VERTICAL DATUM OF 1929

CONTROL ACCURACY: SECOND ORDER, CLASS II

LOCATION SKETCH:



DETAILED DESCRIPTION:

Bench Mark 107 is a chiseled square set in the top of the south side of a concrete sewer chamber.

RECOVERED BY: SEWRPC DATE: 14 JANUARY 2004

RECORD OF VERTICAL CONTROL STATION

SECTION 21 T. 9 N. R. 20 E. WASHINGTON COUNTY, WISCONSIN

BENCH MARK NO.: 992 ELEVATION 851.554

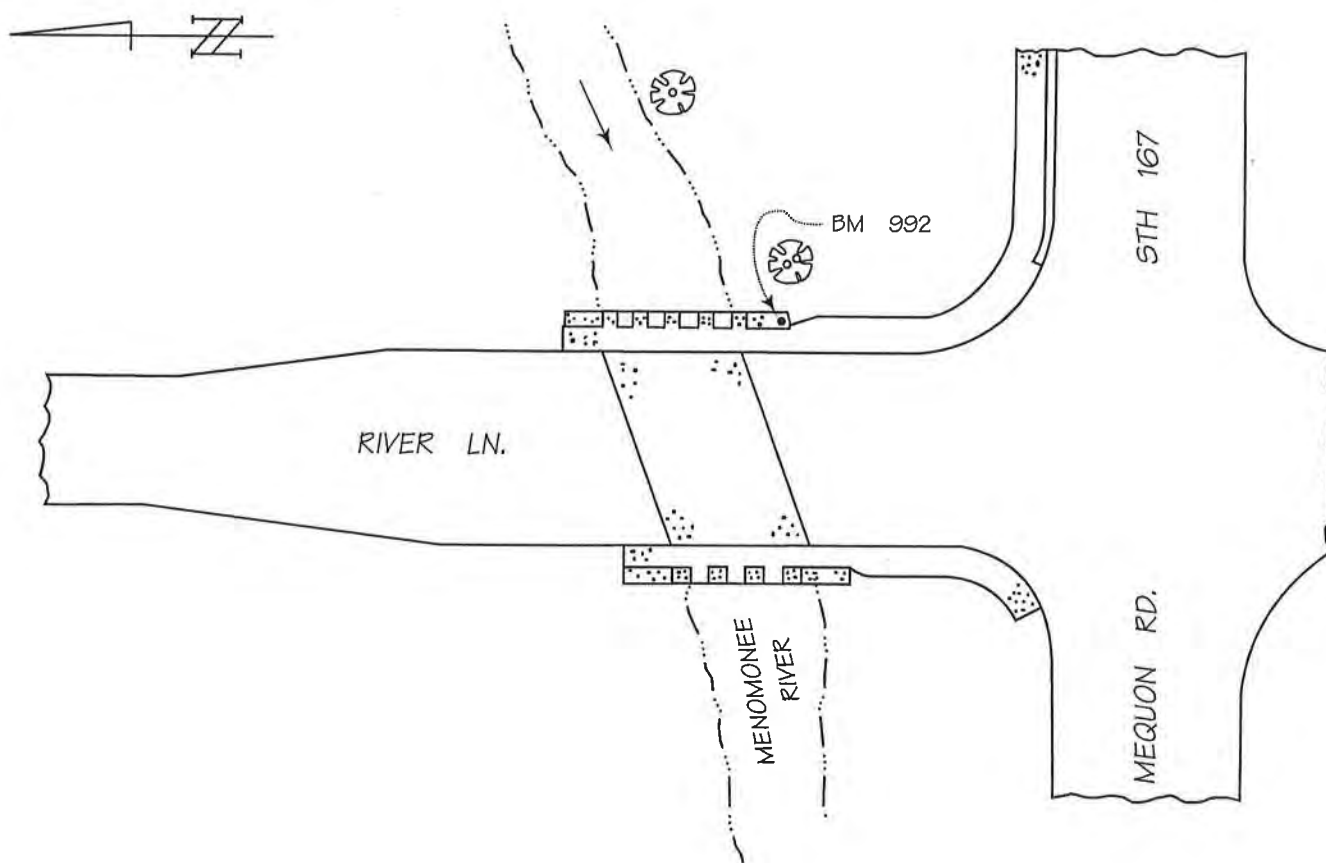
BM SET BY: WisDOT YEAR: 2000

BM CONTROL SURVEY BY: AERO-METRIC, INC. YEAR: 2003

DATUM: NATIONAL GEODETIC VERTICAL DATUM OF 1929

CONTROL ACCURACY: SECOND ORDER, CLASS II

LOCATION SKETCH:



DETAILED DESCRIPTION:

Benchmark 992 is a WisDOT aluminum cap set in the top of the south end of the concrete headwall of bridge No. B-66-117, 2.1 ft. above the concrete walk.

RECOVERED BY: SEWRPC DATE: 14 JANUARY 2004

RECORD OF VERTICAL CONTROL STATION

SECTION 22 T. 9 N. R. 20 E. WASHINGTON COUNTY, WISCONSIN

BENCH MARK NO. MN-46 ELEVATION 852.041

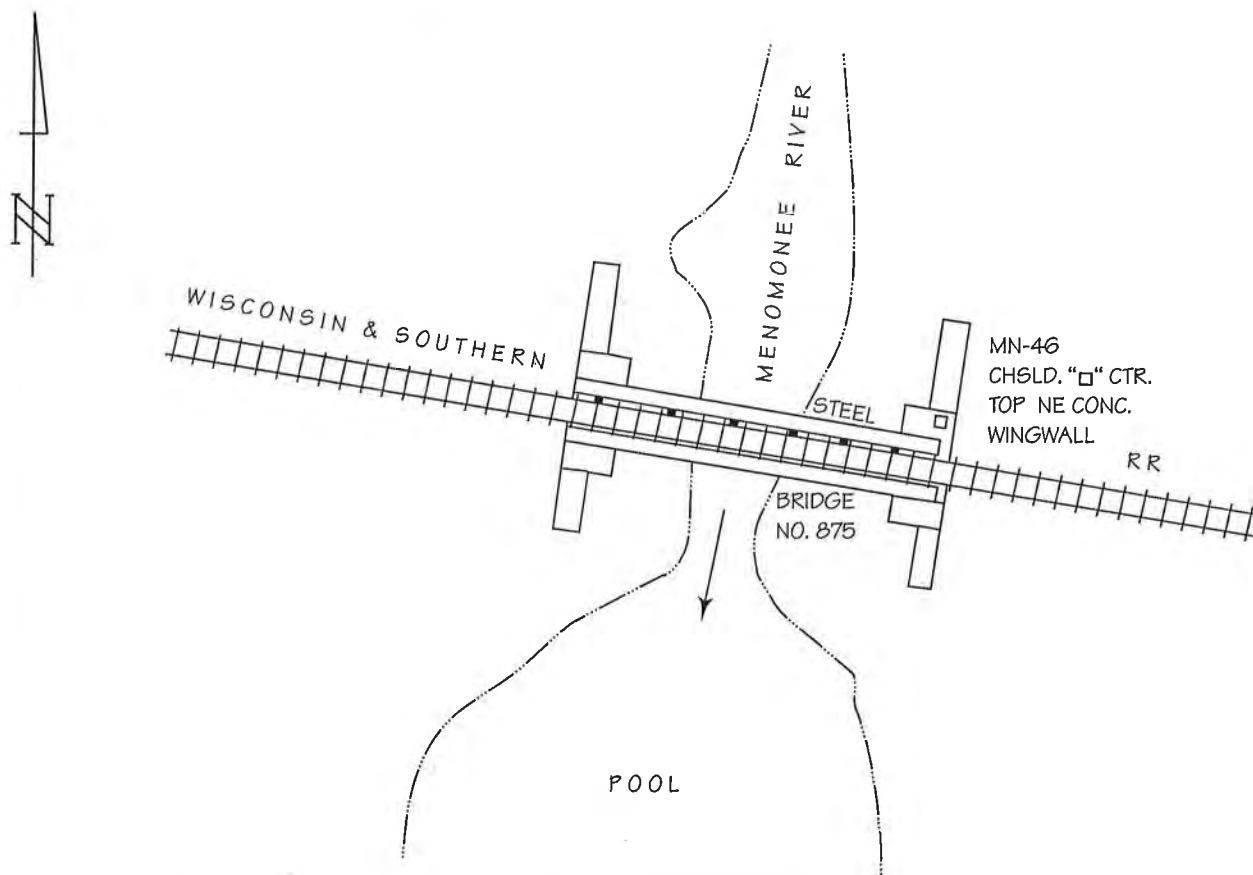
BM SET BY: ALSTER & ASSOC., INC. YEAR: 1973

BM CONTROL SURVEY BY: AYRES ASSOC. /SEWRPC YEAR: 2001/2004

DATUM: NATIONAL GEODETIC VERTICAL DATUM OF 1929

CONTROL ACCURACY: SECOND ORDER, CLASS II

LOCATION SKETCH:



DETAILED DESCRIPTION:

Structure is located about 0.2 mile S of the NW corner of Section 22, T 9 N. R 20 E.

RECOVERED BY: AYRES ASSOC. DATE: 26 NOVEMBER 2001

RECORD OF VERTICAL CONTROL STATION

SECTION 23 T. 9 N. R. 20 E. WASHINGTON COUNTY, WISCONSIN

BENCH MARK NO.: 604 ELEVATION 880.502

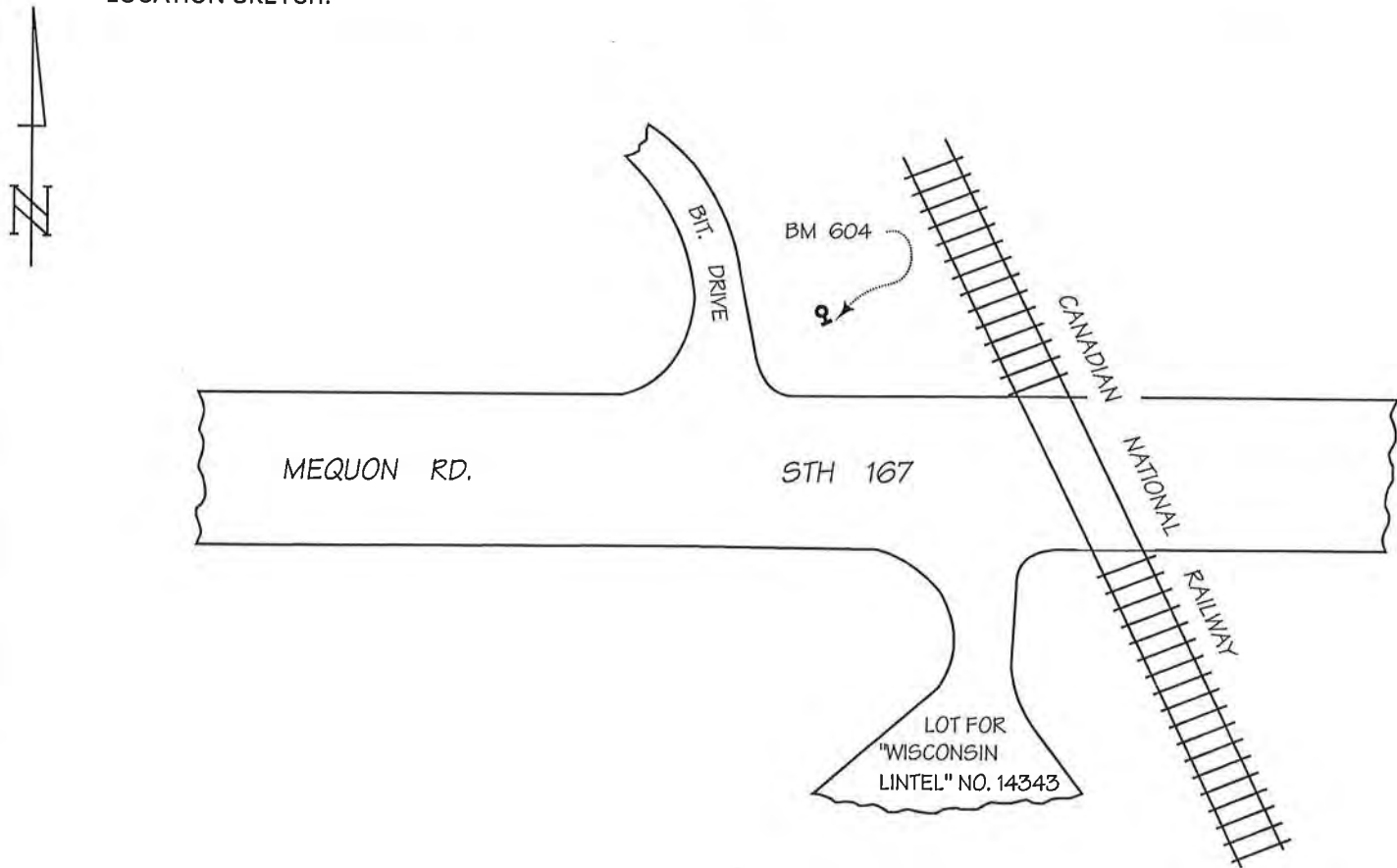
BM SET BY: AERO-METRIC, INC. YEAR: 2003

BM CONTROL SURVEY BY: AERO-METRIC, INC. YEAR: 2003

DATUM: NATIONAL GEODETIC VERTICAL DATUM OF 1929

CONTROL ACCURACY: SECOND ORDER, CLASS II

LOCATION SKETCH:



DETAILED DESCRIPTION:

Bench mark 604 is a railroad spike set in the southeast face of power pole No. 90-08934, 0.4 ft. above grade.

RECOVERED BY: SEWRPC DATE: 14 JANUARY 2004

RECORD OF VERTICAL CONTROL STATION

SECTION 28 T. 9 N. R. 20 E.

WASHINGTON

COUNTY, WISCONSIN

BENCH MARK NO.: 104

ELEVATION: 845.895

BM SET BY: AERO-METRIC, INC.

YEAR: 2003

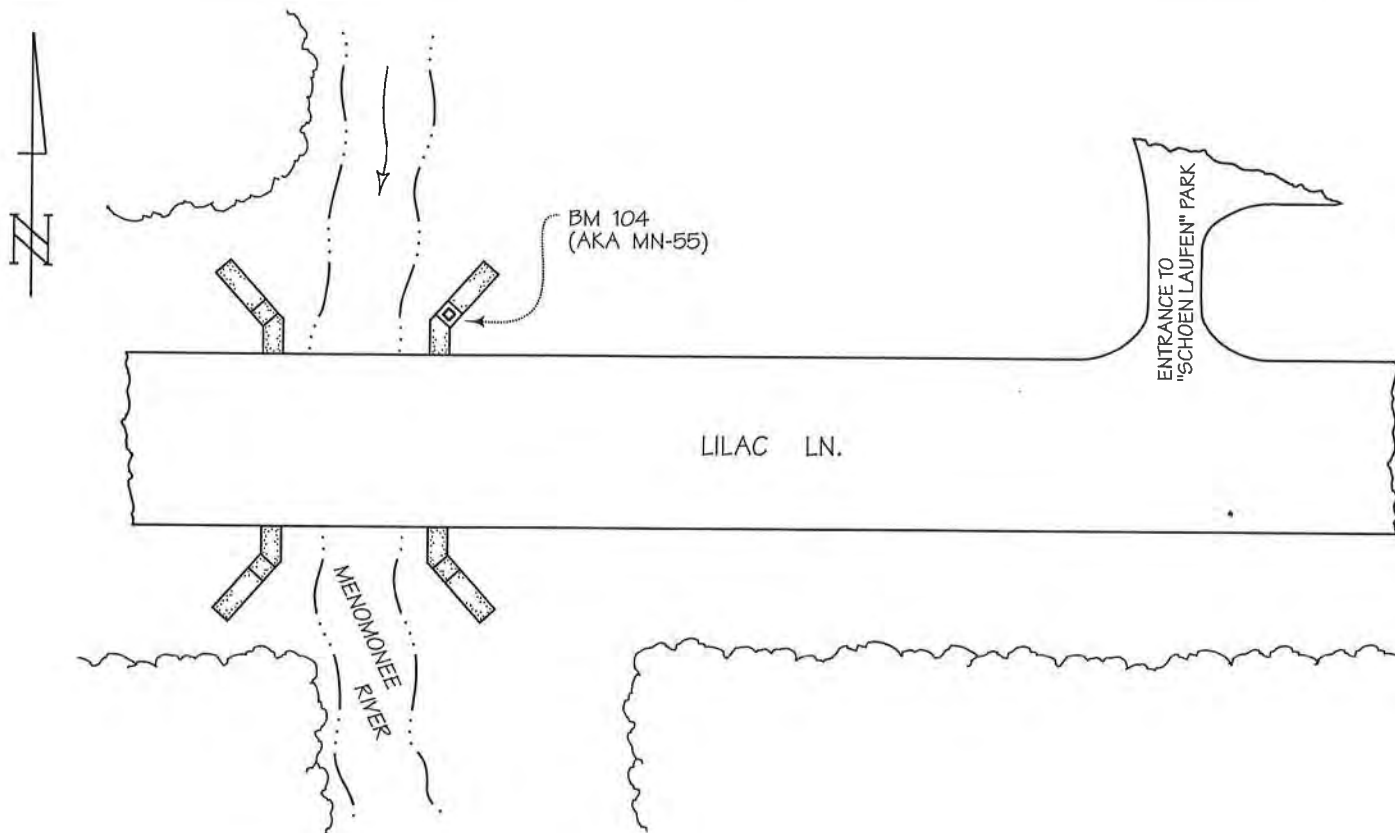
BM CONTROL SURVEY BY: AERO-METRIC, INC.

YEAR: 2003

DATUM: NATIONAL GEODETIC VERTICAL DATUM OF 1929

CONTROL ACCURACY: SECOND ORDER, CLASS II

LOCATION SKETCH:



DETAILED DESCRIPTION:

Benchmark 104 is a chiseled square set in the top of the northeast concrete wingwall.

RECOVERED BY: SEWRPC

DATE: 15 JANUARY 2004

FORM PREPARED BY SOUTHEASTERN WISCONSIN REGIONAL PLANNING COMMISSION

RECORD OF VERTICAL CONTROL STATION

SECTION 29 T. 9 N. R. 20 E. WASHINGTON COUNTY, WISCONSIN

BENCH MARK NO.: 993 ELEVATION: 923.391

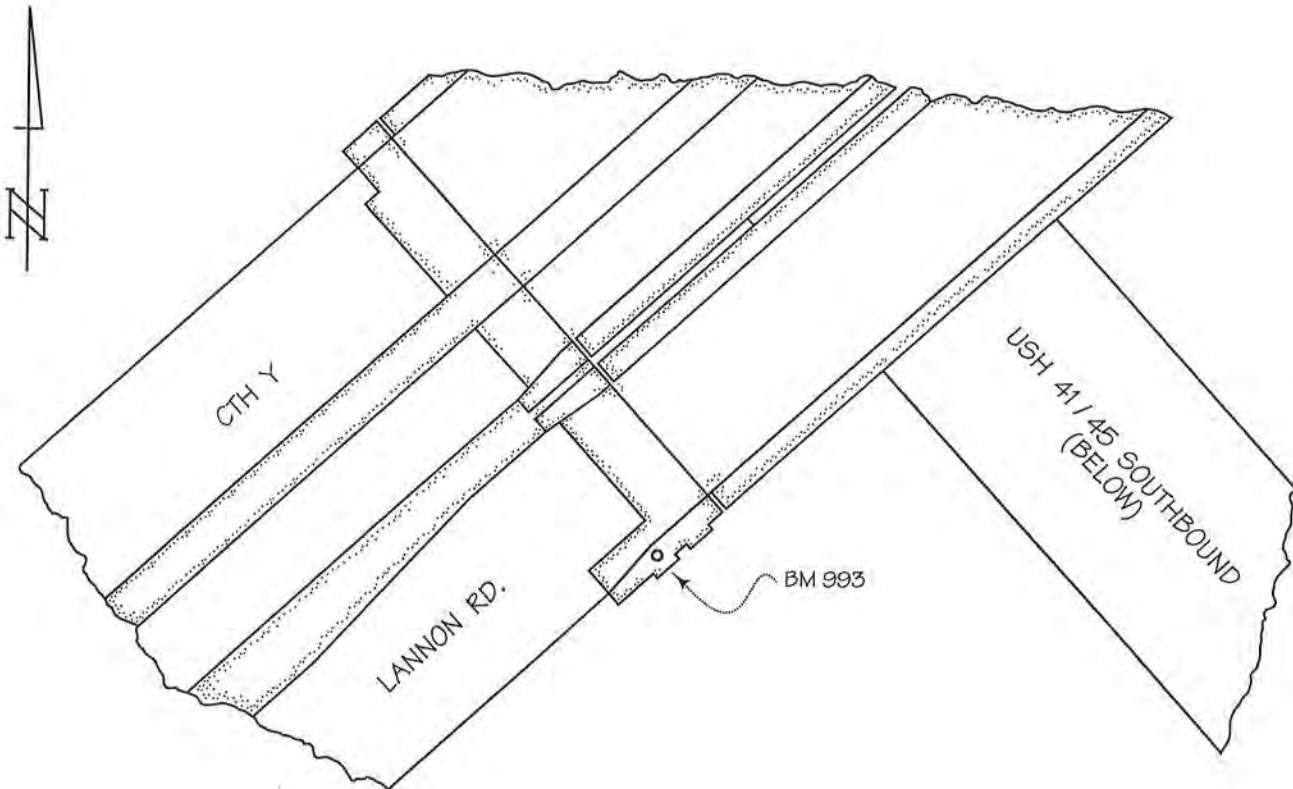
BM SET BY: WisDOT YEAR: 2003

BM CONTROL SURVEY BY: AERO-METRIC, INC. YEAR: 2003

DATUM: NATIONAL GEODETIC VERTICAL DATUM OF 1929

CONTROL ACCURACY: SECOND ORDER, CLASS II

LOCATION SKETCH:



DETAILED DESCRIPTION:

BENCHMARK 993 is a WisDOT aluminum cap set in the top of the southeast concrete parapet wall of Bridge No. B-66-32-69, 3.5 ft. above the concrete pavement.

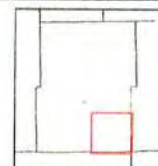
RECOVERED BY: SEWRPC DATE: 15 JANUARY 2004

FORM PREPARED BY SOUTHEASTERN WISCONSIN REGIONAL PLANNING COMMISSION



Bonesta, Inc.
W-28-10

36	31	32	33	34	35	36
1	6	5	4	3	2	1
12	7	8	9	10	11	12
13	18	17	16	15	14	13
24	19	20	21	22	23	24
25	30	29	28	27	26	25
36	31	32	33	34	35	36



920301

Town of Germantown

Washington County

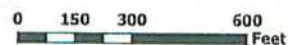
Legend

- PLSS_Monument
- ▭ PLSS_Township
- ▭ Sections_Germantown
- ▭ QuarterSections_Germantown
- ▭ Parcel

Data Sources:
 Washington County Land Information Office
 2005 Aerial image
 2005 Parcel data & boundaries
 2004 Contours and Structures
 ECC
 Communication Layers(current)
 Airports (current)
Wisconsin DNR
 Water (current)
 Ecology (current)



1 inch = 300 feet



Date: Nov 01, 2010

Legend

L:\Wisconsin\Counties\Washington County\2010_TownofGermantown

RECORD OF VERTICAL CONTROL STATION

SECTION 30 T. 9 N. R. 20 E. WASHINGTON COUNTY, WISCONSIN

BENCH MARK NO.: 105 ELEVATION 848.504

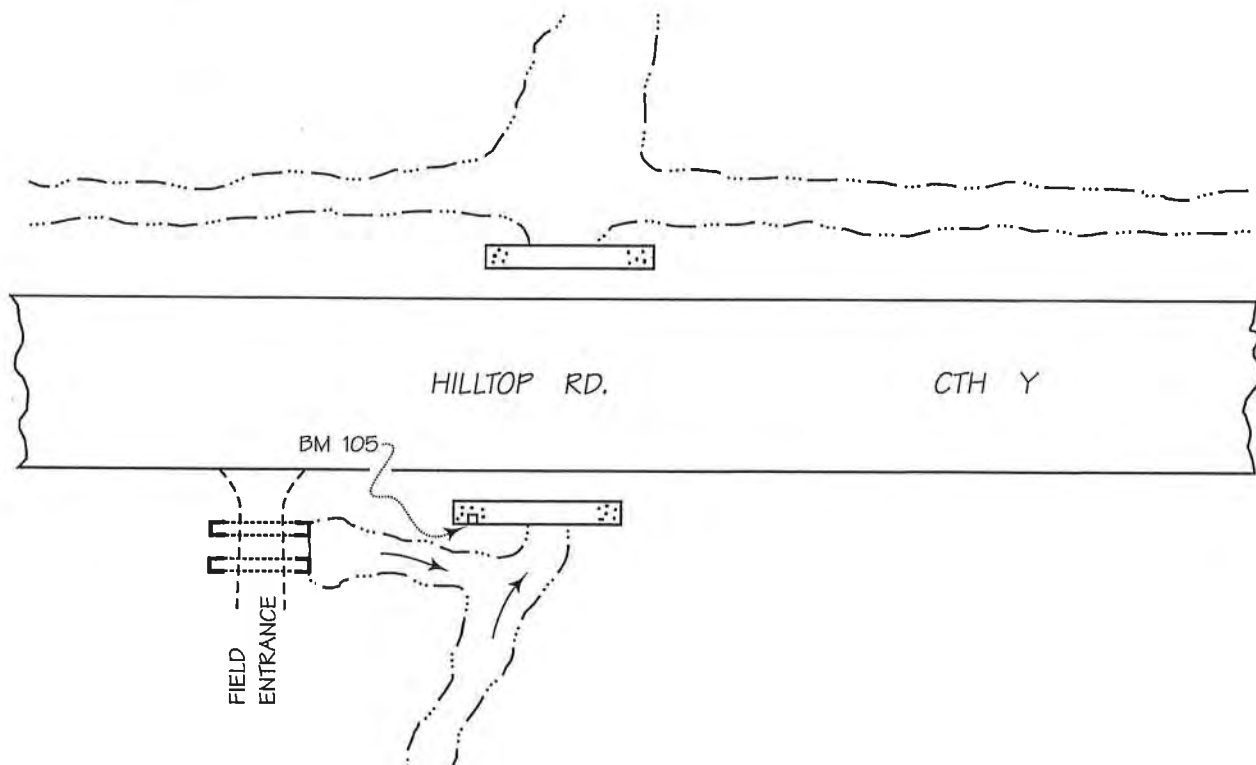
BM SET BY: AERO-METRIC, INC. YEAR: 2003

BM CONTROL SURVEY BY: AERO-METRIC, INC. YEAR: 2003

DATUM: NATIONAL GEODETIC VERTICAL DATUM OF 1929

CONTROL ACCURACY: SECOND ORDER, CLASS II

LOCATION SKETCH:



DETAILED DESCRIPTION:

Benchmark 105 is a chiseled square set in the top of the west side near the north end of a concrete headwall located approximately 0.2 mi. north of STH 175.

RECOVERED BY: SEWRPC DATE: 15 JANUARY 2004

RECORD OF VERTICAL CONTROL STATION

SECTION 30 T. 9 N. R. 20 E. WASHINGTON COUNTY, WISCONSIN

BENCH MARK NO.: 602 ELEVATION 936.912

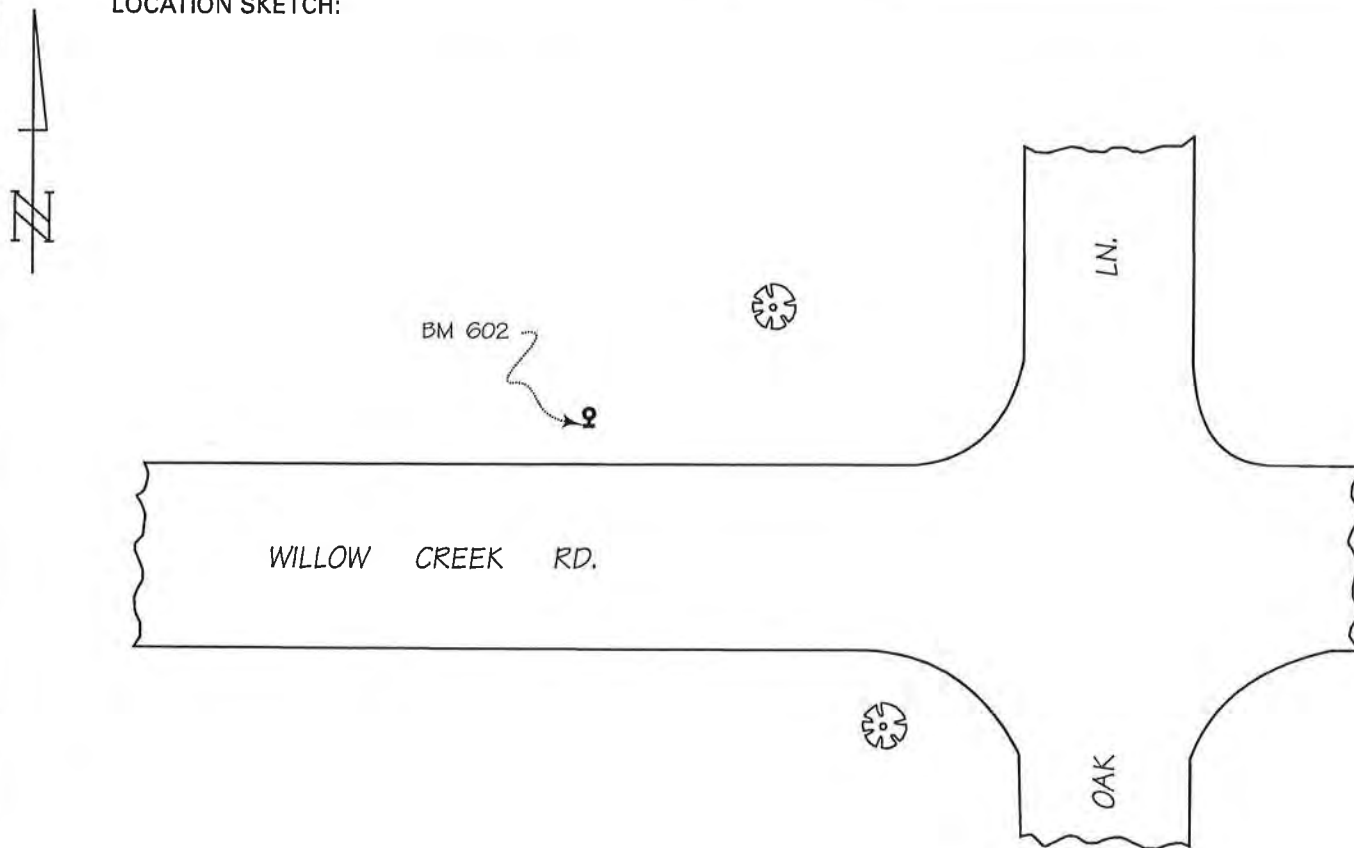
BM SET BY: AERO-METRIC, INC. YEAR: 2003

BM CONTROL SURVEY BY: AERO-METRIC, INC. YEAR: 2003

DATUM: NATIONAL GEODETIC VERTICAL DATUM OF 1929

CONTROL ACCURACY: SECOND ORDER, CLASS II

LOCATION SKETCH:



DETAILED DESCRIPTION:

Benchmark 602 is a railroad spike set in the south face of power pole N. E61-15469, 0.5 ft. above grade.

RECOVERED BY: SEWRPC DATE: 15 JANUARY 2004

RECORD OF VERTICAL CONTROL STATION

SECTION 31 T. 9 N. R. 20 E. WASHINGTON COUNTY, WISCONSIN

BENCH MARK NO.: 2K54 ELEVATION 936.504

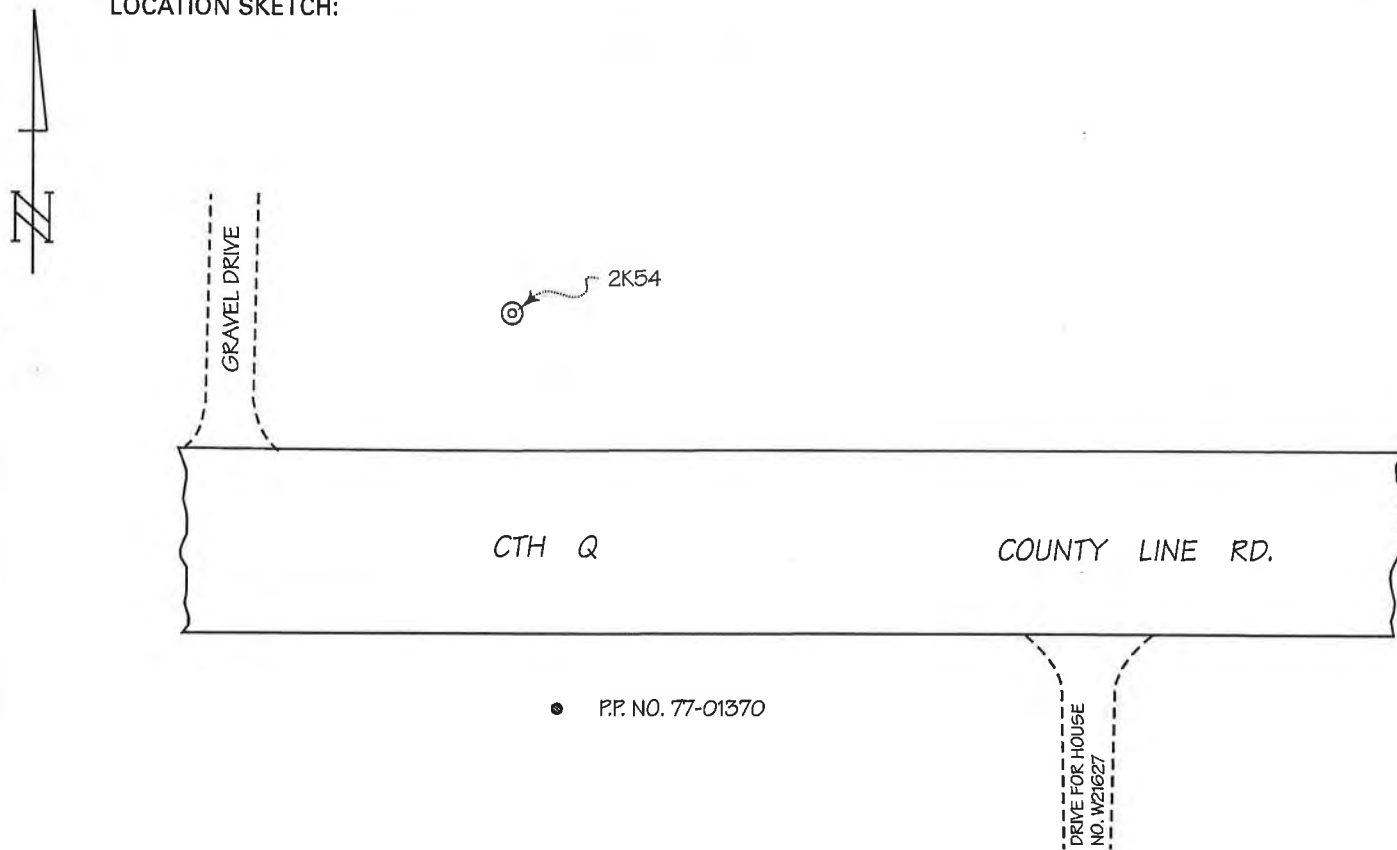
BM SET BY: WisDOT YEAR: 2000

BM CONTROL SURVEY BY: AERO-METRIC, INC. YEAR: 2003

DATUM: NATIONAL GEODETIC VERTICAL DATUM OF 1929

CONTROL ACCURACY: SECOND ORDER, CLASS II

LOCATION SKETCH:



DETAILED DESCRIPTION:

2K54 is a concrete monument with WisDOT brass cap.

RECOVERED BY: SEWRPC DATE: 15 JANUARY 2004

RECORD OF VERTICAL CONTROL STATION

SECTION 33 T. 9 N. R. 20 E. WASHINGTON COUNTY, WISCONSIN

BENCH MARK NO.: 2K55 ELEVATION 860.570

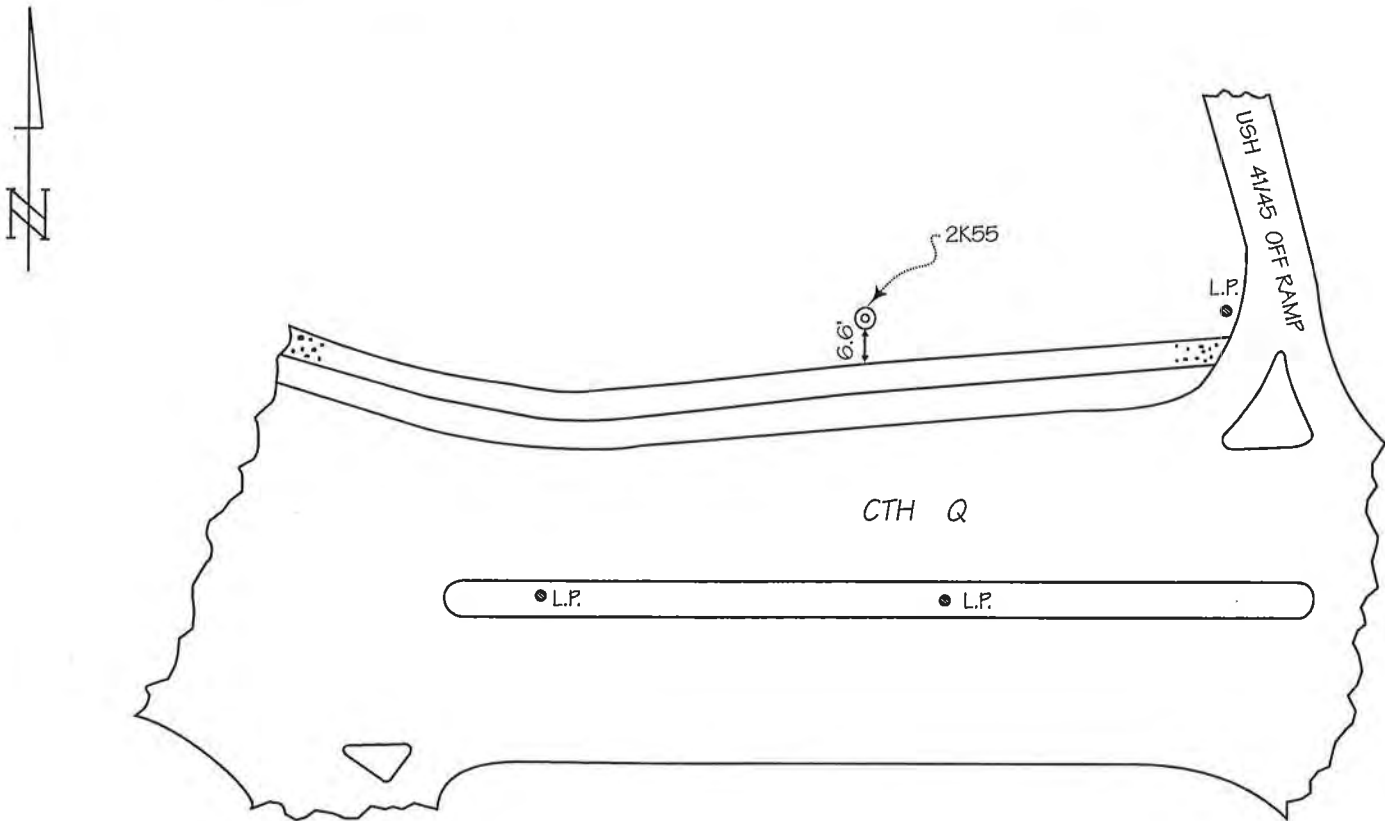
BM SET BY: WisDOT YEAR: 2000

BM CONTROL SURVEY BY: SEWRPC YEAR: 2003

DATUM: NATIONAL GEODETIC VERTICAL DATUM OF 1929

CONTROL ACCURACY: SECOND ORDER, CLASS II

LOCATION SKETCH:



DETAILED DESCRIPTION:

2K55 is a concrete monument with WisDOT brass cap.

RECOVERED BY: SEWRPC DATE: 13 AUGUST 2003

RECORD OF VERTICAL CONTROL STATION

SECTION 36 T. 9 N. R. 20 E. WASHINGTON COUNTY, WISCONSIN

BENCH MARK NAME: GERMANTOWN S GPS ELEVATION 770.872

BM SET BY: WisDOT YEAR: 1999

BM CONTROL SURVEY BY: AERO-METRIC, INC. YEAR: 2003

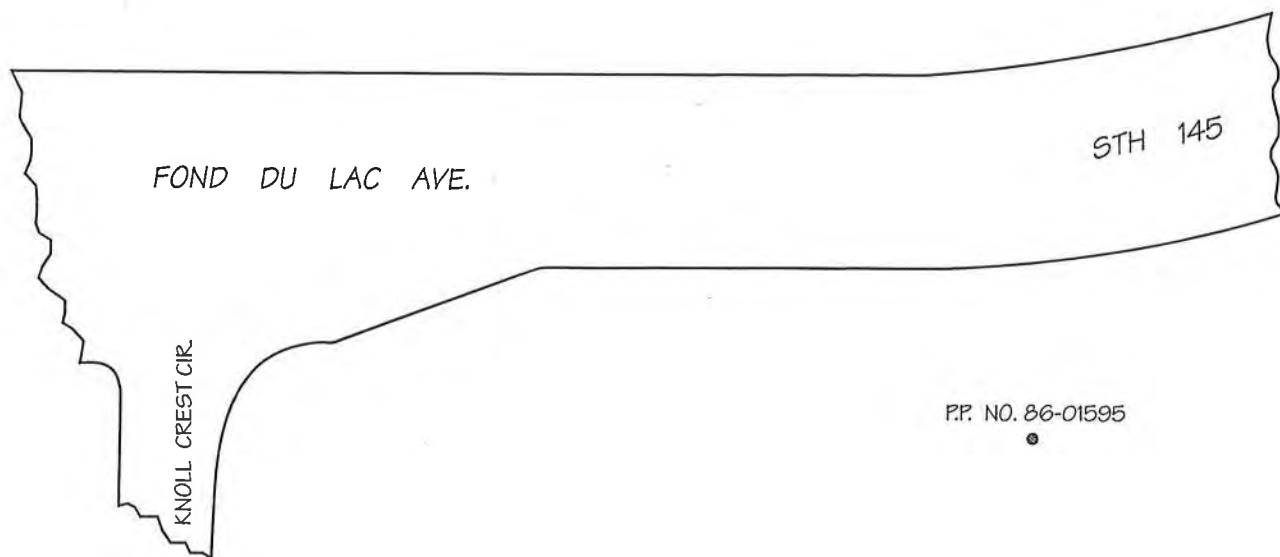
DATUM: NATIONAL GEODETIC VERTICAL DATUM OF 1929

CONTROL ACCURACY: SECOND ORDER, CLASS II

LOCATION SKETCH:



GERMANTOWN S GPS



DETAILED DESCRIPTION:

GERMANTOWN S GPS is a concrete monument with WisDOT brass cap located approximately 500 feet north of County Line Road.

RECOVERED BY: SEWRPC DATE: 11 AUGUST 2003

RECORD OF VERTICAL CONTROL STATION

SECTION 36 T. 9 N. R. 20 E. WASHINGTON COUNTY, WISCONSIN

BENCH MARK NO.: 102 ELEVATION 766.809

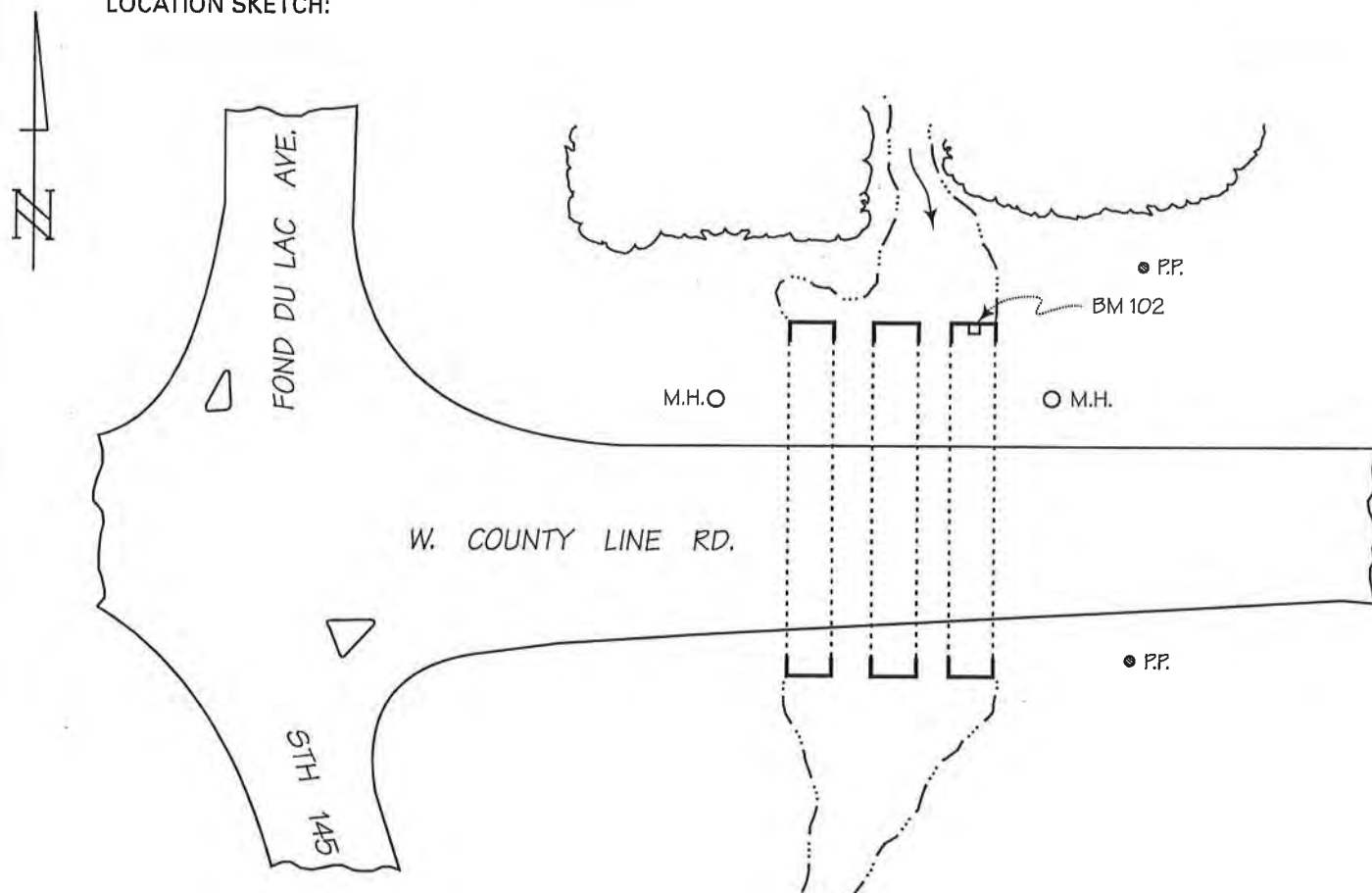
BM SET BY: AERO-METRIC, INC. YEAR: 2003

BM CONTROL SURVEY BY: AERO-METRIC, INC. YEAR: 2003

DATUM: NATIONAL GEODETIC VERTICAL DATUM OF 1929

CONTROL ACCURACY: SECOND ORDER, CLASS II

LOCATION SKETCH:



DETAILED DESCRIPTION:

Benchmark 102 is a chiseled square set in the top of the easterly 60-inch-diameter concrete culvert pipe.

RECOVERED BY: SEWRPC DATE: 14 JANUARY 2004

DECEMBER 1965

LIST OF TBM DESCRIPTIONS & ELEVATIONS, 1929 SEA LEVEL DATUM.
IN THE VILLAGE OF GERMANTOWN, WISCONSIN
SET BY ALSTER & ASSOCIATES, INC., MADISON, WISCONSIN

~~TBM-A1. ELEVATION 874.869'. THE NW CORNER OF THE NE WINGWALL OF THE
CONCRETE CULVERT UNDER FREISTADT ROAD, ABOUT 1000' FROM THE N $\frac{1}{4}$ COR.
OF SECTION 20.~~

~~TBM-A2. ELEVATION 849.377'. A CHIZELED SQUARE ON THE SW WINGWALL OF
THE NEW FREISTADT ROAD BRIDGE OVER THE MENOMONEE RIVER.~~

TBM-B1. ELEVATION 912.213'. A CHIZELED CROSS ON THE NORTH END OF THE
EAST HEADWALL OF THE CONCRETE CULVERT UNDER GOLDENDALE ROAD, FIVE
POLES NORTH OF THE EAST $\frac{1}{4}$ CORNER OF SECTION 19.

TBM-B2. ELEVATION 865.026'. A RR SPIKE IN THE SE FACE OF POWER POLE
IN THE NW QUADRANT OF INTERSECTION OF MEQUON ROAD AND WESTERN AVENUE.
0.9' ABOVE GROUND.

TBM-C1. ELEVATION 872.311'. A CHIZELED CROSS ON THE WEST END OF THE
SOUTH HEADWALL OF THE CONCRETE CULVERT 250' EAST OF THE BEAGLE AND
PONT RANCH ON ROCKFIELD ROAD.

TBM-D1. ELEVATION 865.377'. A CHIZELED CROSS ON THE EAST END OF THE
NORTH HEADWALL OF THE MAPLE ROAD BRIDGE ABOUT $\frac{1}{4}$ MILE NORTH OF THE
FREISTADT ROAD.

TBM-E1. A CHIZELED CROSS ON THE SOUTH END OF THE WEST SIDE OF THE
CONCRETE BOX CULVERT ON NORTH DIVISION ROAD, 1000' NORTH OF OUR
SAVIORS CHURCH AND 1000' SOUTH OF HOLY HILL ROAD.

TBM-G1. ELEVATION 760.830'. A CHIZELED CROSS ON THE NORTH END OF THE
EAST HEADWALL OF THE CULVERT UNDER WAUSAUKEE ROAD, $\frac{1}{4}$ MILE SOUTH OF
DONGES BAY ROAD.

TBM-G2. ELEVATION 784.159'. A CHIZELED CROSS ON THE WEST END OF THE
NORTH HEADWALL OF THE CONCRETE CULVERT UNDER DONGES BAY ROAD, ABOUT
1400' WEST OF WAUSAUKEE ROAD.

TBM-G3. ELEVATION 746.946'. A CHIZELED CROSS ON THE SOUTH END OF THE
WEST HEADWALL OF THE CONCRETE CULVERT UNDER SOUTH DIVISION ROAD,
1500' NORTH OF DONGES BAY ROAD.

TBM-H1. ELEVATION 882.560'. A CHIZELED CROSS ON THE NORTH END OF THE
WEST HEADWALL OF A BOX CULVERT UNDER DIVISION ROAD AT THE NORTH LIMITS
OF THE VILLAGE OF ROCKFIELD.

TBM-I1. ELEVATION 853.563'. A CHIZELED CROSS ON THE EAST END OF THE
SOUTH HEADWALL OF THE BRIDGE UNDER EAST LOVERS LANE ROAD, 1100' EAST
OF PLEASANT VIEW DRIVE.

END OF PAGE ONE

GERMANTOWN SUPPLEMENTAL TBM'S, SET BY ALSTER & ASSOCIATES, INC.

TBM-24. ELEVATION 927.715'. A RR SPIKE IN THE SOUTH FACE OF THE TRANSFORMER POLE, 100' NW OF A CONCRETE SILO AT THE WEST END OF CEDAR LANE.

TBM-RAIN. ELEVATION 848.366'. A CHIZELED CROSS ON THE SOUTH END OF HEADWALL ON THE WEST SIDE OF GOLDENDALE ROAD ABOUT $\frac{1}{4}$ MILE N OF THE INT. OF GOLDENDALE ROAD AND HWY. 175.

TBM-HIWAY. ELEVATION 867.578'. A CHIZELED CROSS ON THE NE CORNER OF THE NW HEADWALL OF THE CULVERT ON THE SOUTH BOUND LANE OF HWY. 41, ABOUT 0.1 MILE SOUTH OF BONNEWELL ROAD, OPPOSITE THE HWY. 41 FURNITURE STORE.

TBM-BOX. ELEVATION 901.106'. A CHIZELED CROSS ON THE NW CORNER OF THE BOX CULVERT UNDER HWY. 145, 0.5 MILE N OF ROCKFIELD ROAD.

TBM-SOD. ELEVATION 847.593'. A CHIZELED CROSS ON THE NE CORNER OF HEADWALL OF CULVERT UNDER DIVISION ROAD, 60' S OF PIONEER ROAD.

TBM-WIND. ELEVATION 851.733'. A CHIZELED CROSS ON THE SE CORNER OF THE HEADWALL OF CULVERT, ON THE SOUTH SIDE OF THE ROAD AT THE INT. OF ROCKY LANE AND PIONEER ROAD.

END OF PAGE NUMBER 2.