

# WASHINGTON COUNTY HIGHWAY REGISTER

## FOREWORD

The County Highway Register is an attempt to search out, correlate, and record all known information concerning the laying out of all roads in the county. It is required under the provisions of Section 83.01(7) (G) as amended by Chapter 183, Acts of the Legislature of 1957. This act specifically excludes incorporated places from the study, hence there will be found no information concerning city and village streets.

In looking for information, the following records have been searched:

1. Proceedings of the Board of County Commissioners, found in the office of the County Clerk.
2. The office of Secretary of State and the Congressional Records, both through the cooperation of the State Highway Commission.
3. The office of the County Court. Here no records apparently were ever filed as none could be found.
4. The office of each Town Clerk in the county. These offices were the best source of information.

Early records were often very sketchy, in some extreme cases merely locating the beginning and the end of a piece of road, occasionally several miles apart with no description of the route between them. Other descriptions involved the use of names of pioneer property owners, buildings, or trees now impossible to locate. Other roads were described by distances from topographical features, such as hills, streams, marshes or lakes, which were too general for anything more than an approximate location. In many cases the road was laid out on a section or quarter section line "or as near thereto as the country may permit." Usually no record was kept of these minor variations. Even where the road was laid on a specific line, the early construction men found natural obstructions too difficult to permit strict adherence to the record. In case of doubt effort has been made to abide by the best information available, at the same time considering the present location of the road. All descriptions which approximate a presently located highway have been indicated on the Register of Index Sheet, although only existing public roads have been shown on the map.

Often a piece of road was laid out more than once, either by the same or a different authority, and perhaps of different widths of right of way. In coloring the map and on the Index Sheet, the latest record has been used. It is felt that this is the legal one, as the Town Boards have the right to lay, alter and abandon any road at any time.

The Register does not concern itself with the Town Road System, the County Road System, nor the State Trunk System as such. The two latter are of comparatively recent origin and have been largely superimposed on the basic system of older roads. A few State or County Trunks have put on virgin locations. These are shown on the Register. Modern construction requires the purchase of wide right of way. Purchases vary in width from farm to farm, or indeed along different parts of the same farm. To include such a mass of detail in this report would be impossible. Where purchase of land were extensive, the road has been shown in brown and the reader referred to the project number. Right of way sketches are available under the project number in the office of the Register of Deeds, the State Highway Commission at Madison and Waukesha, and at the office of the County Highway Commissioner. In addition to the above variation, the stated width may vary in short sections due to purchases of very small bits of property here and there. Where available these have been noted in the Register Sheet. Most of these small purchases were not recorded at all in earlier years, particularly prior to about 1926. The study will therefore contain comparatively few references to the Grantor-Grantee Index.

Town records of laying out roads have been reproduced and are included. Many pages of Town Records concerning roads have not been reproduced, in the interest of brevity. Proceeding in lay a road often include pages for Petition, Notice of Hearing, Notice of Posting or adjournment, and award of damages. These may be necessary legal steps, but would add nothing to the clarity of the Register. Any interested person will find them in the same volume and on adjacent pages to the actual laying.

Information from the offices of County Clerk and Register of Deeds has not been reproduced, as it is readily available in the offices where kept.

# STATE HIGHWAY COMM. OF WISCONSIN

## TOWN PLAT RECORD

Town... WAYNE      County... WASHINGTON

Date of Last Corr.	State Trunks	County Trunks	Local Roads	Symbols
1-1-56	11.60	19.45	45.34	Sch.
1-1-57	11.60	19.45	45.34	Cam.
1-1-58	11.60	19.45	45.34	
1-1-59	11.60	19.47	45.46	

45.46 - 0.37 = 45.09

Certified as Correct By Town Chairman: \_\_\_\_\_

WIDTHS OF RIGHT OF WAY

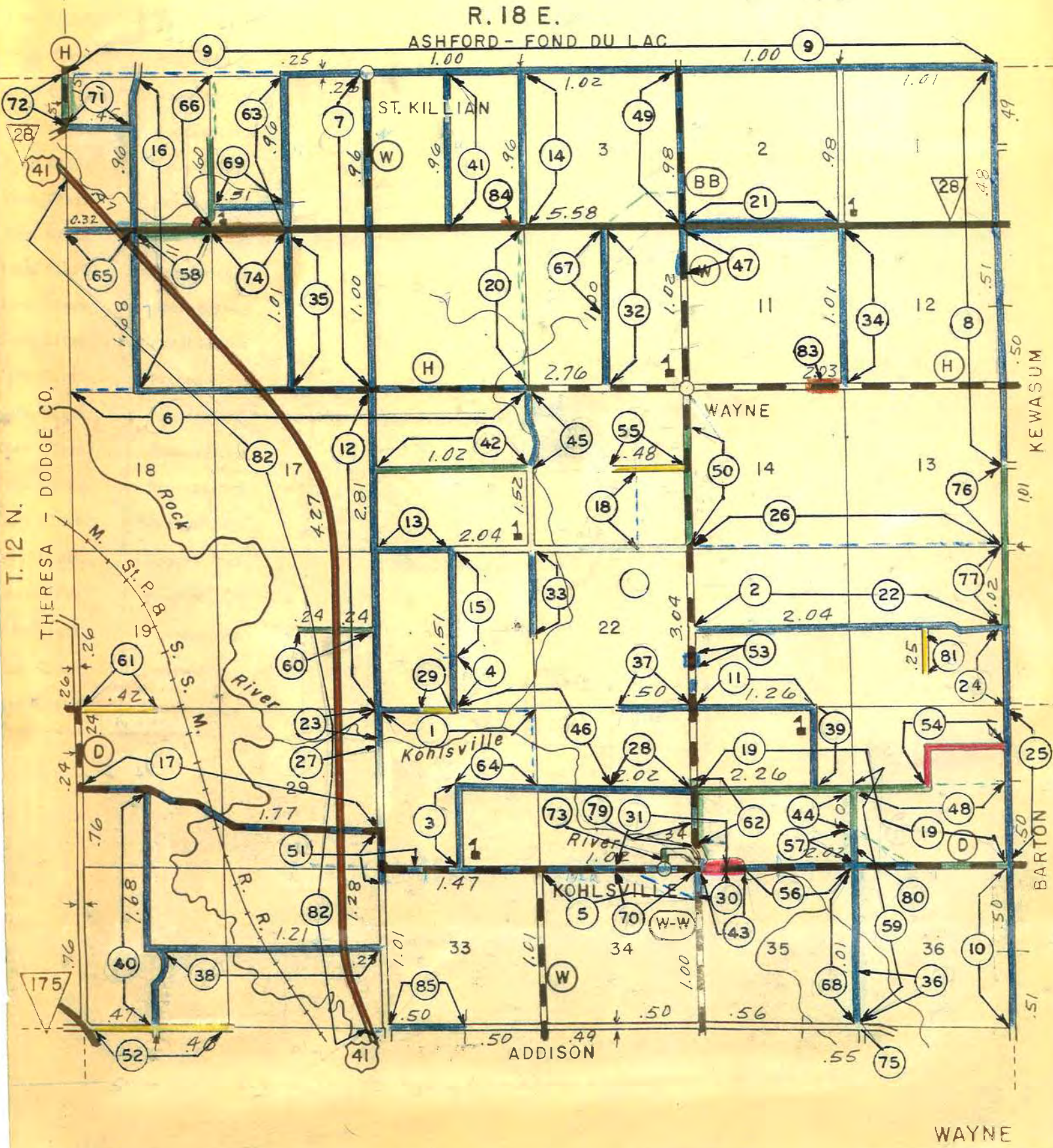
- GREEN - 4 RODS BY ORDER
- BLUE - 4 RODS BY STATUTE, SEC. 80.08
- RED - 3 RODS BY ORDER
- MISCEL. SEE INDEX SHEET
- WIDTH VARIES

(66')

(66')

(49.5')

SCALE 1 MILE



Map Index No.	Instrument	Name of Highway	Sections of Land Effected	Grantor-Grantee		Width	
				Vol.	Page	Feet	Auth. Date
1	Order		23-21			66	Stat. 12/1/1848
2	Order		23-24			66	Stat. 12/13/1848
3	Order		23			66	Stat. 1/2/1849
4	Order		21			66	Stat. 1/2/1849
5	Order	C.T.H. "D" in part	27-34			66	Stat. 3/3/1849
6	Order	C.T.H. "H" in part	<u>9-87</u> 1617 18	121	250,136	66	Stat. 3/5/1849
7	Order	C.T.H. "W" in part	5-4, 8-9	121	119,120 123,126 127,257 258	66	Stat. 3/5/1849
8	Order		1,12,13			66	Stat. 3/31/1849
9	Order		1-6 Incl.			66	Stat. 5/25/1849
10	Order		36			66	Stat. 6/18/1849
11	Order		23-26			66	Stat. 6/18/1849
12	Order		17-16,20-21			66	Stat. 9/19/1849
13	Order		<u>16</u> 21			66	Stat. 10/19/1849
14	Order		3-4			66	Stat. 10/19/1849
15	Order		21			66	Stat. 2/20/1849
16	Order		6,7			66	Stat. 2/24/1849
17	Order	C.T.H. "D"	30,29			66	Stat.
18	Order		15			66	Stat. 3/22/1850 6/3/1850
19	Order	C.T.H. "D" in part	<u>25,26</u> 36	121	294	66	Ord. 5/19/1850
20	Order		9-10			66	Ord. 5/12/1850
21	Order	S.T.H. "28"	<u>2</u> 11			66	Stat. 11/25/1850
22	Survey See #2 above		23,24				6/31/1850
23	Order		28,29			66	Stat. 12/21/1850
24	Order		24			66	Stat. 2/15/1851
25	Order		25			66	Stat. 2/15/1851
26	Order		<u>14</u> <u>13</u> <u>23</u> <u>24</u>			66	Stat. 3/29/1851
27	Order		23,29			66	Stat. 5/1/1851
28	Order		27			66	Stat. 6/20/1851
29	Order		<u>21</u> 23			24,75	Order 8/2/1851
30	Order		34-35 27-26			66	Stat. 11/5/1851

Map Index No.	Instrument	Name of Highway	Sections of Land Effected	Grantor-Grantee		Width	
				Vol.	Page	Feet	Auth. Date
31	Order		27			66	Stat. 12/8/1851
32	Order		10			66	Stat. 2/14/1852
33	Order		21-22			66	Stat. 3/23/1852
34	Order		11-12			66	Stat. 5/29/1852
35	Order		8			66	Stat. 6/22/1852
36	Order		35-36			66	Stat. 9/18/1852
37	Order		22-27			66	Stat. 9/18/1852
38	Order		31,32			66	Stat. 9/22/1852
39	Order		22			66	Stat. 12/17/1852
40	Order		30,31			66	Stat. 1/18/1853
41	Order		4			66	Stat. 1/29/1853
42	Order Order		16			66	Not laid out 12/27/1853 Order 1/13/1855
43	Order		<u>22</u> 35	121	291	49.5	Order 1/19/1854
44	Order		25,26 See item No. 59			33	Order
45	Order		15-16			66	Stat. 1/20/1854
46	Order		<u>22, 27-28</u> 27 21-28			66	Stat. 2/17/1854
47	Order		10-11	121	125	66	stat. 2/18/1854
48	Order		25			66	Order 10/7/1854
49	Order	C.T.H. "BE"	2-3			66	Order 10/14/1854
50	Order	C.T.H. "W"	14-15			66	Order
51	Order	C.T.H. "D"	<u>28, 32-33</u> 33 29, 28			66	Stat. 5/19/1855
52	Order		31			33	Order 6/23/1855
53	Order	C.T.H. "W"				66	Stat. 7/14/1855
54	Order		25			49.5	Order 9/13/1856
55	Order		15			33	Stat. 9/27/1856
56	Order	C.T.H. "D"	<u>25, 25</u> 35 35	121	292, 293 295	66	Stat. 10/21/1856
57	Order		25-26			66	Stat. 10/21/1856
58	Order		<u>6, 5</u> 7 8			66	Order 6/20/1857
59	Order		25-25, 35-36			66	Order 12/15/1857
60	Order		20			33 66	Order 12/30/1857 Order 3/30/1870
61	Order		19			24	Order 1/16/1858

TOWN OF WAYNE		Name of Highway	Sections of Land effected	Grantor-Grantee		Width	
Map Index No.	Instrument			Vol.	Page	Feet	Auth. Date
62	Order		25			66	Order 3/20/1858
63	Order		5	121	119, 120 143	66	Stat. 5/8/1858
64	Order		28			66	Stat. 6/12/1858
65	Order		$\frac{6}{7}$			66	Stat. 5/16/1858
66	Order		6-5			66	Order 5/16/1860
67	Order		10			66	Stat. 6/18/1861
68	Order		35-36			66	Stat. 12/31/1861
69	Order		7			66	Stat. 12/3/1863
70	Order		70			66	Stat. 5/6/1868
71	Order		6			66	Stat. 7/10/1869
72	Order	C.T.H. "H"	6			66	Order 3/11/1870
73	Order		27			66	Order 7/5/1872
74	Order Co. Hwy. Dept.	S.T.H. "28"	5-6	121	296, 297	Var.	Order 6/12/1877
75	Order		36			33	Order 12/27/1879
76	Order		13			66	Order 12/13/1885
77	Order		24			66	Order 2/2/1887
78	Order						3/12/1916
79	Order		26-27			66	Order 3/23/1922
80	Order		25			49.5	Order 11/16/1934
81	Order		24			33	Order 5/20/1936
82	Reloc. Or.	U.S.H. "41"	6, 7, 17, 20 29, 32			Var.	Order 1956-8
83	Order	S.T.H. "28"	11, 14	121	248, 249	Var.	Order
84	Order	S.T.H. "28"	4	121	211	Var.	Order
85	Order		33			66	Stat. 12/9/1876

Map Index No.	Source of Information				Page No. in C.H.R.	Page Reproduced in C.H.R.	
	Office	Name of Record	Vol.	Page			
1	Town Clerk	Proceedings	1	1	1	Yes	
2	Town Clerk	Proceedings	1	1	1	Yes	
3	Town Clerk	Proceedings	1	1	1	Yes	
4	Town Clerk	Proceedings	1	2-3	2	Yes	
5	Town Clerk	Proceedings	1	2-3	2	Yes	
6	Town Clerk	Proceedings	1	2-3	2	Yes	
7	Town Clerk	Proceedings	1	2-3	2	Yes	
8	Town Clerk	Proceedings	1	4	3	Yes	
9	Town Clerk	Proceedings	1	5	4	Yes	
10	Town Clerk	Proceedings	1	5	4	Yes	
11	Town Clerk	Proceedings	1	6	5	Yes	
12	Town Clerk	Proceedings	1	6-27	5-22	Yes	
13	Town Clerk	Proceedings	1	7	6	Yes	
14	Town Clerk	Proceedings	1	7	6	Yes	
15	Town Clerk	Proceedings	1	7	6	Yes	
16	Town Clerk	Proceedings	1	8	7	Yes	
17	Town Clerk	Proceedings	1	8	7	Yes	
18	Town Clerk	Proceedings	1	8-12	7-10	Yes	
19	Town Clerk	Proceedings	1	10-11	8-9	Yes	
20	Town Clerk	Proceedings	1	10	8	Yes	
21	Town Clerk	Proceedings	1	10	8	Yes	
22	Town Clerk	Proceedings	1	11	9	Yes	
23	Town Clerk	Proceedings	1	12	10	Yes	
24	Town Clerk	Proceedings	1	14	11	Yes	
25	Town Clerk	Proceedings	1	14	11	Yes	
26	Town Clerk	Proceedings	1	16	12	Yes	
27	Town Clerk	Proceedings	1	17	13	Yes	
28	Town Clerk	Proceedings	1	18-19-32	14-15-26	Yes	
29	Town Clerk	Proceedings	1	19	15	Yes	
30	Town Clerk	Proceedings	1	19	15	Yes	
31	Town Clerk	Proceedings	1	20	16	Yes	
32	Town Clerk	Proceedings	1	20-21-23	16-17-23	Yes	
33	Town Clerk	Proceedings	1	21	17	Yes	
34	Town Clerk	Proceedings	1	22	18	Yes	
35	Town Clerk	Proceedings	1	23	19	Yes	
36	Town Clerk	Proceedings	1	23	19	Yes	

Map Index No.	Source of Information				Page No. in C.H.R.	Page Reproduced in C.M.R.	
	Office	Name of Record	Vol.	Page			
37	County Clerk	Proceedings	1	24	20	Yes	
38	County Clerk	Proceedings	1	24-27	20-22	Yes	
39	County Clerk	Proceedings	1	26	21	Yes	
40	County Clerk	Proceedings	1	26	21	Yes	
41	County Clerk	Proceedings	1	27-37	22-28	Yes	
42	County Clerk	Proceedings	1	30-37	24-28	Yes	
43	County clerk	Proceedings	1	31	25	Yes	
44	County Clerk	Proceedings	1	31	25	Yes	
45	County Clerk	Proceedings	1	32	26	Yes	
46	County Clerk	Proceedings	1	33	27	Yes	
47	County Clerk	Proceedings	1	33	27	Yes	
48	County Clerk	Proceedings	1	36	28	Yes	
49	County Clerk	Proceedings	1	37	28	Yes	
50	County Clerk	Proceedings	1	39	29	Yes	
51	County Clerk	Proceedings	1	44	30	Yes	
52	County Clerk	Proceedings	1	46	31	Yes	
53	County Clerk	Proceedings	1	48	32	Yes	
54	County Clerk	Proceedings	1	54	33	Yes	
55	County Clerk	Proceedings	1	54-55	33-34	Yes	
56	County Clerk	Proceedings	1	56	35	Yes	
57	County Clerk	Proceedings	1	56	35	Yes	
58	County Clerk	Proceedings	1	58	36	Yes	
59	County Clerk	Proceedings	1	60	37	Yes	
60	County Clerk	Proceedings	1	61-109	38-54	Yes	
61	County Clerk	Proceedings	1	62	38-39	Yes	
62	County Clerk	Proceedings	1	64-64A	41-42	Yes	
63	County Clerk	Proceedings	1	68	43	Yes	
64	County Clerk	Proceedings	1	68	43	Yes	
65	County Clerk	Proceedings	1	75	44	Yes	
66	County Clerk	Proceedings	1	75	44	Yes	
67	County Clerk	Proceedings	1	79	45	Yes	
68	County Clerk	Proceedings	1	80	47	Yes	
69	County Clerk	Proceedings	1	86	48	Yes	
70	County Clerk	Proceedings	1	98	49	Yes	

Map Index No.	Source of Information				Page No. in C.H.R.	Page Reproduced in C.H.R.
	Office	Name of Record	Vol.	Page		
71	County Clerk	Proceedings	1	101-102 104	50-52	Yes
72	County Clerk	Proceedings	1	105	53	Yes
73	County Clerk	Proceedings	1	110	55	Yes
74	County Clerk Co. Hwy. Comm.	Proceedings Proj.	1 -	121-122 ---	56-57 ---	Yes No
75	County Clerk	Proceedings	1	125-126	58-59	Yes
76	County Clerk	Proceedings	1	130	60	Yes
77	County Clerk	Proceedings	1	131	61	Yes
78	County Clerk	Proceedings	1	136-137	62-63	Yes
79	County Clerk	Proceedings	1	195-196	64-65	Yes
80	County Clerk	Proceedings	2	405-407	66-68	Yes
81	County Clerk	Proceedings	2	441-442	69-70	Yes
82	County Clerk St. Hwy. Comm.	Plans Proj. F 03-1(41)(63) F 03-1(4) (15)	-	---	---	No
83	Co. Hwy. Dept.	Road Plans	-	--	--	No
84	Co. Hwy. Dept.	Road Plans	-	--	--	No
85	Town Clerk* *For photostat Addison Book	Proceedings copy of No. 85, See pages 81 and 82 of the Town of	2	222,223	71	Yes